

Anti-PDHB antibody [17A5E2H8] ab110331

★★★★★ [1 Abreviews](#) [5 References](#) [画像数 2](#)

製品の概要

製品名	Anti-PDHB antibody [17A5E2H8]
製品の詳細	Mouse monoclonal [17A5E2H8] to PDHB
由来種	Mouse
アプリケーション	適用あり: IHC-P, WB
種交差性	交差種: Mouse, Rat, Cow, Human
免疫原	Full length protein. This information is considered to be commercially sensitive.
ポジティブ・コントロール	Isolated mitochondria from Human, Bovine, Rat and Mouse hearts; HepG2 whole cell lysate (ab7900). This antibody gave a positive result in IHC in the following FFPE tissue: Human normal duodenum.
特記事項	<p>This antibody clone is manufactured by Abcam. If you require a custom buffer formulation or conjugation for your experiments, please contact orders@abcam.com.</p> <p>The Life Science industry has been in the grips of a reproducibility crisis for a number of years. Abcam is leading the way in addressing this with our range of recombinant monoclonal antibodies and knockout edited cell lines for gold-standard validation. Please check that this product meets your needs before purchasing.</p> <p>If you have any questions, special requirements or concerns, please send us an inquiry and/or contact our Support team ahead of purchase. Recommended alternatives for this product can be found below, along with publications, customer reviews and Q&As</p> <p>Product was previously marketed under the MitoSciences sub-brand.</p>

製品の特性

製品の状態	Liquid
保存方法	Shipped at 4°C. Store at +4°C. Do Not Freeze.
バッファー	pH: 7.5 Preservative: 0.02% Sodium azide Constituent: HEPES buffered saline
精製度	IgG fraction
特記事項(精製)	ab110331 was produced in vitro using hybridomas grown in serum-free medium, and then purified by biochemical fractionation.

ポリ/モノ	モノクローナル
クローン名	17A5E2H8
アイソタイプ	IgG1
軽鎖の種類	kappa

アプリケーション

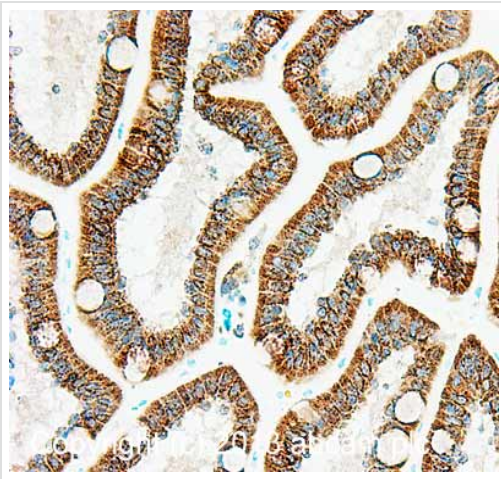
The Abpromise guarantee **Abpromise保証は、次のテスト済みアプリケーションにおけるab110331の使用に適用されます**
 アプリケーションノートには、推奨の開始希釈率がありますが、適切な希釈率につきましてはご検討ください。

アプリケーション	Abreviews	特記事項
IHC-P		Use a concentration of 5 µg/ml. Perform heat mediated antigen retrieval with citrate buffer pH 6 before commencing with IHC staining protocol.
WB	★★★★★ (1)	Use a concentration of 1 µg/ml. Predicted molecular weight: 39 kDa.

ターゲット情報

機能	The pyruvate dehydrogenase complex catalyzes the overall conversion of pyruvate to acetyl-CoA and CO ₂ . It contains multiple copies of three enzymatic components: pyruvate dehydrogenase (E1), dihydrolipoamide acetyltransferase (E2) and lipoamide dehydrogenase (E3).
関連疾患	Defects in PDHB are a cause of pyruvate dehydrogenase E1 component deficiency (PDHE1 deficiency) [MIM:312170]. PDHE1 deficiency is the most common enzyme defect in patients with primary lactic acidosis. It is associated with variable clinical phenotypes ranging from neonatal death to prolonged survival complicated by developmental delay, seizures, ataxia, apnea, and in some cases to an X-linked form of Leigh syndrome (LS) (Leigh encephalomyelopathy).
細胞内局在	Mitochondrion matrix.

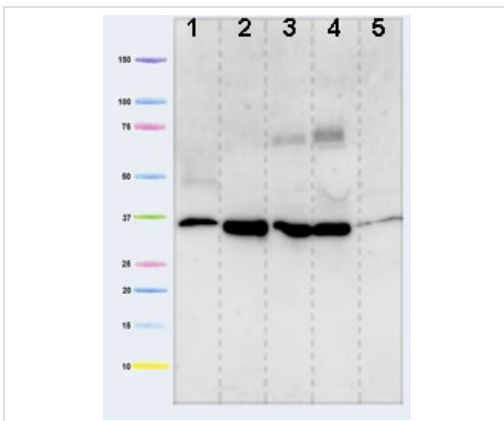
画像



Immunohistochemistry (Formalin/PFA-fixed paraffin-embedded sections) - Anti-PDHB antibody [17A5E2H8] (ab110331)

IHC image of PDHB staining in Human normal duodenum formalin fixed paraffin embedded tissue section, performed on a Leica Bond™ system using the standard protocol F. The section was pre-treated using heat mediated antigen retrieval with sodium citrate buffer (pH6, epitope retrieval solution 1) for 20 mins. The section was then incubated with ab110331, 5µg/ml, for 15 mins at room temperature and detected using an HRP conjugated compact polymer system. DAB was used as the chromogen. The section was then counterstained with haematoxylin and mounted with DPX.

For other IHC staining systems (automated and non-automated) customers should optimize variable parameters such as antigen retrieval conditions, primary antibody concentration and antibody incubation times.



Western blot - Anti-PDHB antibody [17A5E2H8] (ab110331)

All lanes : Anti-PDHB antibody [17A5E2H8] (ab110331) at 1 µg/ml

Lane 1 : Isolated mitochondria from Human heart at 10 µg/ml

Lane 2 : Isolated mitochondria from Bovine heart at 4 µg/ml

Lane 3 : Isolated mitochondria from Rat heart at 10 µg/ml

Lane 4 : Isolated mitochondria from Mouse heart at 10 µg/ml

Lane 5 : HepG2 cell lysate at 20 µg/ml

Predicted band size: 39 kDa

Please note: All products are "FOR RESEARCH USE ONLY. NOT FOR USE IN DIAGNOSTIC PROCEDURES"

Our Abpromise to you: Quality guaranteed and expert technical support

- Replacement or refund for products not performing as stated on the datasheet
- Valid for 12 months from date of delivery
- Response to your inquiry within 24 hours
- We provide support in Chinese, English, French, German, Japanese and Spanish
- Extensive multi-media technical resources to help you
- We investigate all quality concerns to ensure our products perform to the highest standards

If the product does not perform as described on this datasheet, we will offer a refund or replacement. For full details of the Abpromise, please visit <https://www.abcam.co.jp/abpromise> or contact our technical team.

Terms and conditions

- Guarantee only valid for products bought direct from Abcam or one of our authorized distributors