


# Anti-PDGF B antibody ab111310

[3 References](#) [画像数 2](#)

### 製品の概要

製品名	Anti-PDGF B antibody
製品の詳細	Goat polyclonal to PDGF B
由来種	Goat
アプリケーション	<b>適用あり:</b> IHC-P
種交差性	<b>交差種:</b> Human <b>交差が予測される動物種:</b> Mouse, Rat, Sheep, Cow, Dog 
免疫原	Synthetic peptide corresponding to Human PDGF B (C terminal) conjugated to keyhole limpet haemocyanin.

 [Run BLAST with](#)  [Run BLAST with](#) 

### 特記事項

The Life Science industry has been in the grips of a reproducibility crisis for a number of years. Abcam is leading the way in addressing this with our range of recombinant monoclonal antibodies and knockout edited cell lines for gold-standard validation. Please check that this product meets your needs before purchasing.

If you have any questions, special requirements or concerns, please send us an inquiry and/or contact our Support team ahead of purchase. Recommended alternatives for this product can be found below, along with publications, customer reviews and Q&As

### 製品の特性

製品の状態	Liquid
保存方法	Shipped at 4°C. Store at +4°C short term (1-2 weeks). Upon delivery aliquot. Store at -20°C long term.
バッファー	pH: 7.30 Preservative: 0.02% Sodium azide Constituents: Tris buffered saline, 0.5% BSA
精製度	Immunogen affinity purified
ポリモノ	ポリクローナル
アイソタイプ	IgG

### アプリケーション

## The Abpromise guarantee

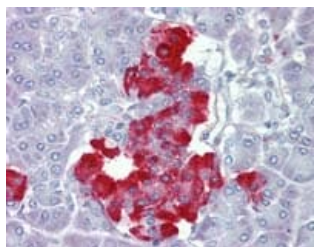
**Abpromise保証は、次のテスト済みアプリケーションにおけるab111310の使用に適用されます**

アプリケーションノートには、推奨の開始希釈率がありますが、適切な希釈率につきましてはご検討ください。

アプリケーション	Abreviews	特記事項
IHC-P		Use a concentration of 3.75 µg/ml. Perform heat mediated antigen retrieval with citrate buffer pH 6 before commencing with IHC staining protocol.

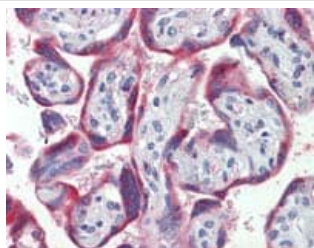
## ターゲット情報

## 画像



Immunohistochemistry (Formalin/PFA-fixed paraffin-embedded sections) - Anti-PDGF B antibody (ab111310)

Immunohistochemistry Image of Human Pancreas tissue: Formalin Fixed and Paraffin Embedded (FFPE) and stained with anti PDGF B antibody (ab111310) at 3.75 µg/ml. After incubation with the primary antibody, slides were incubated with biotinylated secondary antibody, followed by alkaline phosphatase streptavidin and chromogen. The stained slides were evaluated by a pathologist to confirm staining specificity.



Immunohistochemistry (Formalin/PFA-fixed paraffin-embedded sections) - Anti-PDGF B antibody (ab111310)

Immunohistochemistry Image of Human Placenta tissue: Formalin-Fixed and Paraffin-Embedded (FFPE) and stained with anti-PDGF B antibody (ab111310) at 3.75 µg/ml. After incubation with the primary antibody, slides were incubated with biotinylated secondary antibody, followed by alkaline phosphatase streptavidin and chromogen. The stained slides were evaluated by a pathologist to confirm staining specificity.

**Please note:** All products are "FOR RESEARCH USE ONLY. NOT FOR USE IN DIAGNOSTIC PROCEDURES"

## Our Abpromise to you: Quality guaranteed and expert technical support

- Replacement or refund for products not performing as stated on the datasheet
- Valid for 12 months from date of delivery
- Response to your inquiry within 24 hours

- We provide support in Chinese, English, French, German, Japanese and Spanish
- Extensive multi-media technical resources to help you
- We investigate all quality concerns to ensure our products perform to the highest standards

If the product does not perform as described on this datasheet, we will offer a refund or replacement. For full details of the Abpromise, please visit <https://www.abcam.co.jp/abpromise> or contact our technical team.

### **Terms and conditions**

---

- Guarantee only valid for products bought direct from Abcam or one of our authorized distributors