

Anti-PDE8A antibody ab109597

2 References [画像数 2](#)

製品の概要

製品名	Anti-PDE8A antibody
製品の詳細	Rabbit polyclonal to PDE8A
由来種	Rabbit
アプリケーション	適用あり: WB, IP
種交差性	交差種: Human
免疫原	Synthetic peptide corresponding to a region between residue 779 and 829 of Human PDE8A (NP_002596.1).
ポジティブ・コントロール	HeLa and 293T whole cell lysates.
特記事項	<p>The Life Science industry has been in the grips of a reproducibility crisis for a number of years. Abcam is leading the way in addressing this with our range of recombinant monoclonal antibodies and knockout edited cell lines for gold-standard validation. Please check that this product meets your needs before purchasing.</p> <p>If you have any questions, special requirements or concerns, please send us an inquiry and/or contact our Support team ahead of purchase. Recommended alternatives for this product can be found below, along with publications, customer reviews and Q&As</p>

製品の特性

製品の状態	Liquid
保存方法	Shipped at 4°C. Upon delivery aliquot and store at -20°C. Avoid freeze / thaw cycles.
バッファー	<p>pH: 7</p> <p>Preservative: 0.09% Sodium azide</p> <p>Constituent: Tris citrate/phosphate</p>
精製度	Immunogen affinity purified
ポリ/モノ	ポリクローナル
アイソタイプ	IgG

アプリケーション

The Abpromise guarantee

Abpromise保証は、 次のテスト済みアプリケーションにおけるab109597の使用に適用されます

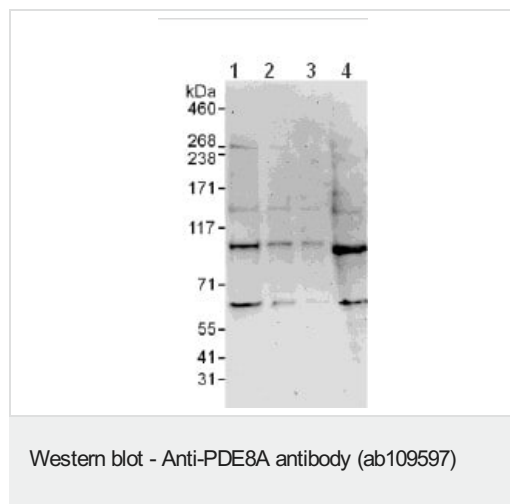
アプリケーションノートには、推奨の開始希釈率がありますが、適切な希釈率につきましてはご確認ください。

アプリケーション	Abreviews	特記事項
WB		1/2000 - 1/10000. Predicted molecular weight: 93 kDa.
IP		Use at 2-5 µg/mg of lysate.

ターゲット情報

機能	Hydrolyzes the second messenger cAMP, which is a key regulator of many important physiological processes. May be involved in maintaining basal levels of the cyclic nucleotide and/or in the cAMP regulation of germ cell development.
組織特異性	Expressed in most tissues except thymus and peripheral blood leukocytes. Highest levels in testis, ovary, small intestine and colon.
パスウェイ	Purine metabolism; 3',5'-cyclic AMP degradation; AMP from 3',5'-cyclic AMP: step 1/1.
配列類似性	Belongs to the cyclic nucleotide phosphodiesterase family. PDE8 subfamily. Contains 1 PAC (PAS-associated C-terminal) domain. Contains 1 PAS (PER-ARNT-SIM) domain.
ドメイン	Composed of a C-terminal catalytic domain containing two putative divalent metal sites and an N-terminal regulatory domain.

画像



All lanes : Anti-PDE8A antibody (ab109597) at 0.1 µg/ml

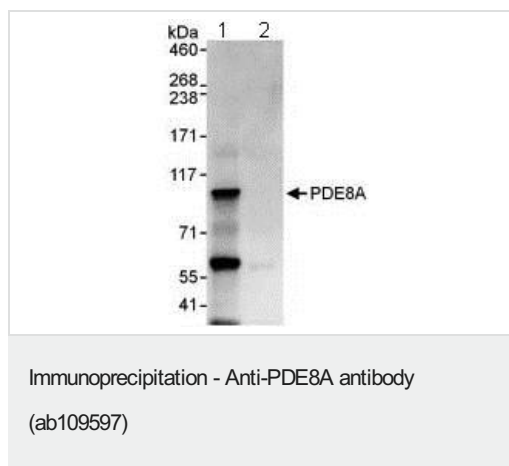
Lane 1 : HeLa cell lysate at 50 µg

Lane 2 : HeLa cell lysate at 15 µg

Lane 3 : HeLa cell lysate at 5 µg

Lane 4 : 293T cell lysate at 50 µg

Predicted band size: 93 kDa



Detection of PDE8A by Western Blot of Immunoprecipitate.

Lane 1: ab109597 at 1µg/ml staining PDE8A in HeLa whole cell lysate immunoprecipitated using ab109597 at 6µg/mg lysate (1 mg/IP; 20% of IP loaded/lane).

Lane 2: Control IgG

Detection: Chemiluminescence with exposure time of 30 seconds.

All lanes : Anti-PDE8A antibody (ab109597) at 1 µg

Lane 1 : IP of 6 µg of PDE8A antibody/mg HeLa cell lysate

Lane 2 : Control IgG with HeLa cell lysate

Lysates/proteins at 1000 µg per lane.

Please note: All products are "FOR RESEARCH USE ONLY. NOT FOR USE IN DIAGNOSTIC PROCEDURES"

Our Abpromise to you: Quality guaranteed and expert technical support

- Replacement or refund for products not performing as stated on the datasheet
- Valid for 12 months from date of delivery
- Response to your inquiry within 24 hours
- We provide support in Chinese, English, French, German, Japanese and Spanish
- Extensive multi-media technical resources to help you
- We investigate all quality concerns to ensure our products perform to the highest standards

If the product does not perform as described on this datasheet, we will offer a refund or replacement. For full details of the Abpromise, please visit <https://www.abcam.co.jp/abpromise> or contact our technical team.

Terms and conditions

- Guarantee only valid for products bought direct from Abcam or one of our authorized distributors