

Anti-PDE7A/HCP1 antibody ab14616

2 References [画像数 1](#)

医薬用外劇物

製品の概要

製品名	Anti-PDE7A/HCP1 antibody
製品の詳細	Rabbit polyclonal to PDE7A/HCP1
由来種	Rabbit
アプリケーション	適用あり: WB
種交差性	交差種: Rat
免疫原	Synthetic peptide corresponding to PDE7A/HCP1.
特記事項	<p>The Life Science industry has been in the grips of a reproducibility crisis for a number of years. Abcam is leading the way in addressing this with our range of recombinant monoclonal antibodies and knockout edited cell lines for gold-standard validation. Please check that this product meets your needs before purchasing.</p> <p>If you have any questions, special requirements or concerns, please send us an inquiry and/or contact our Support team ahead of purchase. Recommended alternatives for this product can be found below, along with publications, customer reviews and Q&As</p>

製品の特性

製品の状態	Liquid
保存方法	Shipped at 4°C. Upon delivery aliquot and store at -20°C or -80°C. Avoid repeated freeze / thaw cycles.
バッファー	Preservative: 0.02% Thimerosal (merthiolate)
精製度	Immunogen affinity purified
ポリ/モノ	ポリクローナル
アイソタイプ	IgG

アプリケーション

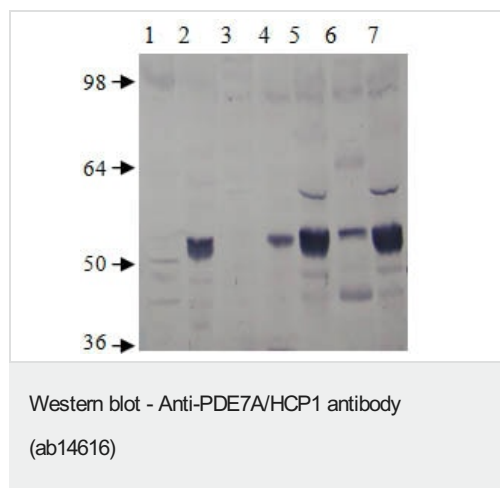
The Abpromise guarantee **Abpromise保証は、次のテスト済みアプリケーションにおけるab14616の使用に適用されます**
 アプリケーションノートには、推奨の開始希釈率がありますが、適切な希釈率につきましてはご検討ください。

アプリケーション	Abreviews	特記事項
WB		1/500. Detects a band of approximately 53 kDa (predicted molecular weight: 55 kDa).

ターゲット情報

機能	Hydrolyzes the second messenger cAMP, which is a key regulator of many important physiological processes. May have a role in muscle signal transduction.
組織特異性	PDE7A1 is found at high levels in skeletal muscle and at low levels in a variety of tissues including brain and heart. It is expressed as well in two T-cell lines. PDE7A2 is found abundantly in skeletal muscle and at low levels in heart.
パスウェイ	Purine metabolism; 3',5'-cyclic AMP degradation; AMP from 3',5'-cyclic AMP: step 1/1.
配列類似性	Belongs to the cyclic nucleotide phosphodiesterase family. PDE7 subfamily.
発生段階	Developmentally regulated. PDE7A1 and PDE7A2 are found in several fetal tissues, expression is reduced throughout development. It persists strongly only in adult skeletal muscle.
ドメイン	Composed of a C-terminal catalytic domain containing two putative divalent metal sites and an N-terminal regulatory domain.
細胞内局在	Cytoplasm > cytosol. PDE7A1 (57 kDa) is located mostly to soluble cellular fractions and Cytoplasm. PDE7A2 (50 kDa) is located to particulate cellular fractions.

画像



All lanes : Anti-PDE7A/HCP1 antibody (ab14616) at 1/500 dilution

Lane 1 : Rat Lungs

Lane 2 : Rat Kidney

Lane 3 : Rat Testis

Lane 4 : Rat PC-PDE7A/HCP1

Lanes 5 & 7 : Rat Heart

Lane 6 : Rat Brain

Predicted band size: 55 kDa

Please note: All products are "FOR RESEARCH USE ONLY. NOT FOR USE IN DIAGNOSTIC PROCEDURES"

Our Promise to you: Quality guaranteed and expert technical support

- Replacement or refund for products not performing as stated on the datasheet
- Valid for 12 months from date of delivery
- Response to your inquiry within 24 hours

- We provide support in Chinese, English, French, German, Japanese and Spanish
- Extensive multi-media technical resources to help you
- We investigate all quality concerns to ensure our products perform to the highest standards

If the product does not perform as described on this datasheet, we will offer a refund or replacement. For full details of the Abpromise, please visit <https://www.abcam.co.jp/abpromise> or contact our technical team.

Terms and conditions

- Guarantee only valid for products bought direct from Abcam or one of our authorized distributors