


Anti-PDE6D antibody ab96825

1 References [画像数 1](#)

医薬用外劇物

製品の概要

製品名	Anti-PDE6D antibody
製品の詳細	Rabbit polyclonal to PDE6D
由来種	Rabbit
アプリケーション	適用あり: ICC/IF, IHC-P, WB
種交差性	交差種: Mouse, Human 交差が予測される動物種: Rat, Cow, Dog, Zebrafish 
免疫原	Recombinant fragment corresponding to Human PDE6D aa 1-120. Database link: NP_002592
ポジティブ・コントロール	WB: MOLT4 whole cell lysate; mouse eye lysate. IHC-P: SAS xenograft tissue. ICC/IF: HeLa cells.
特記事項	<p>The Life Science industry has been in the grips of a reproducibility crisis for a number of years. Abcam is leading the way in addressing this with our range of recombinant monoclonal antibodies and knockout edited cell lines for gold-standard validation. Please check that this product meets your needs before purchasing.</p> <p>If you have any questions, special requirements or concerns, please send us an inquiry and/or contact our Support team ahead of purchase. Recommended alternatives for this product can be found below, along with publications, customer reviews and Q&As</p>

製品の特性

製品の状態	Liquid
保存方法	Shipped at 4°C. Upon delivery aliquot and store at -20°C or -80°C. Avoid repeated freeze / thaw cycles.
バッファー	pH: 7.00 Preservative: 0.01% Thimerosal (merthiolate) Constituents: 1.21% Tris, 0.75% Glycine, 10% Glycerol (glycerin, glycerine)
精製度	Immunogen affinity purified
ポリ/モノ	ポリクローナル
アイソタイプ	IgG

アプリケーション

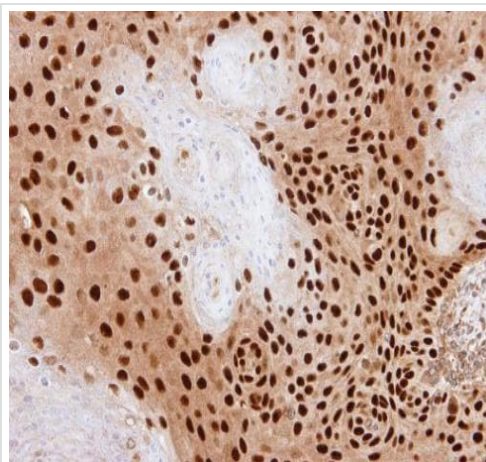
The Abpromise guarantee Abpromise保証は、 次のテスト済みアプリケーションにおけるab96825の使用に適用されます
アプリケーションノートには、推奨の開始希釈率がありますが、適切な希釈率につきましてはご確認ください。

アプリケーション	Abreviews	特記事項
ICC/IF		1/100 - 1/1000.
IHC-P		1/100 - 1/1000.
WB		1/500 - 1/5000. Predicted molecular weight: 17 kDa.

ターゲット情報

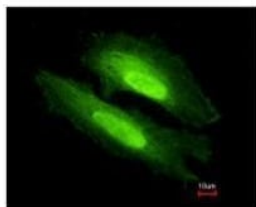
機能	Acts as a GTP specific dissociation inhibitor (GDI). Increases the affinity of ARL3 for GTP by several orders of magnitude and does so by decreasing the nucleotide dissociation rate. Stabilizes Arl3-GTP by decreasing the nucleotide dissociation.
組織特異性	Retina.
配列類似性	Belongs to the PDE6D/unc-119 family.

画像



Immunohistochemistry (Formalin/PFA-fixed paraffin-embedded sections) - Anti-PDE6D antibody (ab96825)

Paraffin-embedded SAS xenograft tissue labeling PDE6D with ab96825 at 1/500 dilution in immunohistochemical analysis.
Antigen retrieval: EDTA-based (pH 8.0), 15 minutes.

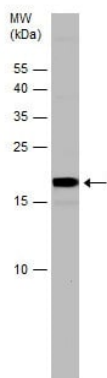


Costained with Hoechst 33342

Methanol-fixed HeLa (human epithelial cell line from cervix adenocarcinoma) cells labeling PDE6D with ab96825 at 1/500 dilution (green) in ICC/IF.

The nuclear counter stain is Hoechst 33342 (blue).

Immunocytochemistry/ Immunofluorescence - Anti-PDE6D antibody (ab96825)



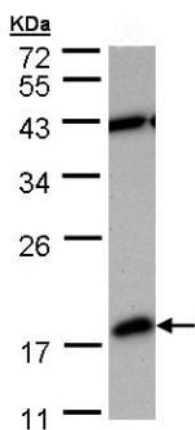
Anti-PDE6D antibody (ab96825) at 1/5000 dilution + Mouse eye lysate at 50 µg

Secondary

Anti-Rabbit IgG HRP

Predicted band size: 17 kDa

Western blot - Anti-PDE6D antibody (ab96825)



Western blot - Anti-PDE6D antibody (ab96825)

Anti-PDE6D antibody (ab96825) at 1/1000 dilution + MOLT4 whole cell lysate at 30 µg

Predicted band size: 17 kDa

12% SDS PAGE

Please note: All products are "FOR RESEARCH USE ONLY. NOT FOR USE IN DIAGNOSTIC PROCEDURES"

Our Abpromise to you: Quality guaranteed and expert technical support

- Replacement or refund for products not performing as stated on the datasheet
- Valid for 12 months from date of delivery
- Response to your inquiry within 24 hours
- We provide support in Chinese, English, French, German, Japanese and Spanish
- Extensive multi-media technical resources to help you
- We investigate all quality concerns to ensure our products perform to the highest standards

If the product does not perform as described on this datasheet, we will offer a refund or replacement. For full details of the Abpromise, please visit <https://www.abcam.co.jp/abpromise> or contact our technical team.

Terms and conditions

- Guarantee only valid for products bought direct from Abcam or one of our authorized distributors