

Anti-PDE6D antibody ab5665

★★★★★ [1 Abreviews](#) [3 References](#) [画像数 2](#)

製品の概要

製品名	Anti-PDE6D antibody
製品の詳細	Rabbit polyclonal to PDE6D
由来種	Rabbit
特異性	This antibody does not detect other PDE6 isoforms.
アプリケーション	適用あり: ICC/IF, WB, ICC, IHC-Fr
種交差性	交差種: Mouse, Sheep, Cow, Dog, Human, Pig
免疫原	Synthetic peptide corresponding to Mouse PDE6D aa 1-16. Sequence: MSAKDERAR(D/E)ILRGFK (Peptide available as ab41788) Run BLAST with Run BLAST with
ポジティブ・コントロール	ICC/IF: B3 cells, BAEC cells
特記事項	<p>The Life Science industry has been in the grips of a reproducibility crisis for a number of years. Abcam is leading the way in addressing this with our range of recombinant monoclonal antibodies and knockout edited cell lines for gold-standard validation. Please check that this product meets your needs before purchasing.</p> <p>If you have any questions, special requirements or concerns, please send us an inquiry and/or contact our Support team ahead of purchase. Recommended alternatives for this product can be found below, along with publications, customer reviews and Q&As</p>

製品の特性

製品の状態	Liquid
保存方法	Shipped at 4°C. Store at +4°C short term (1-2 weeks). Upon delivery aliquot. Store at -20°C or -80°C. Avoid freeze / thaw cycle.
バッファー	Preservative: 0.05% Sodium azide Constituents: 99% PBS, 0.1% BSA
精製度	Immunogen affinity purified
ポリ/モノ	ポリクローナル

アプリケーション

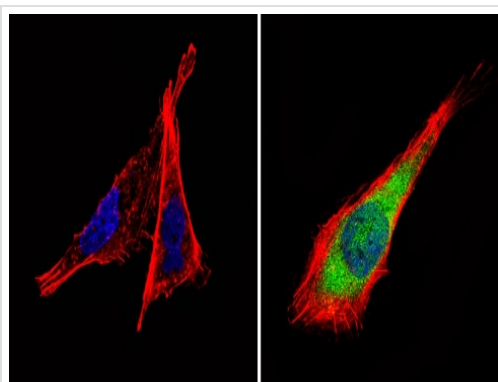
The Abpromise guarantee **Abpromise保証は、次のテスト済みアプリケーションにおけるab5665の使用に適用されず**
 アプリケーションノートには、推奨の開始希釈率がありますが、適切な希釈率につきましてはご検討ください。

アプリケーション	Abreviews	特記事項
ICC/IF		1/10 - 1/200.
WB	★★★★★ (1)	Use at an assay dependent concentration.
ICC		Use at an assay dependent concentration.
IHC-Fr		Use at an assay dependent concentration. Immunohistochemical staining of PDE6D in bovine retinal cross-sections using ab5665 results in staining of retinal outer segments.

ターゲット情報

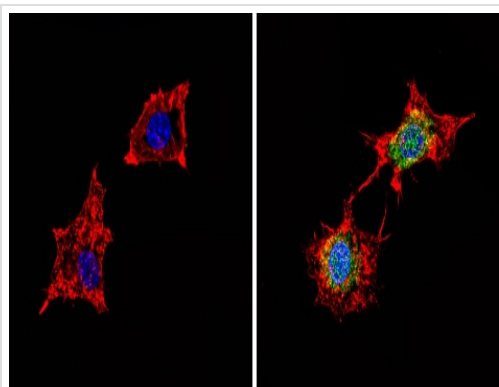
機能	Acts as a GTP specific dissociation inhibitor (GDI). Increases the affinity of ARL3 for GTP by several orders of magnitude and does so by decreasing the nucleotide dissociation rate. Stabilizes Arl3-GTP by decreasing the nucleotide dissociation.
組織特異性	Retina.
配列類似性	Belongs to the PDE6D/unc-119 family.

画像



Immunocytochemistry/ Immunofluorescence - Anti-PDE6D antibody (ab5665)

Immunocytochemistry/Immunofluorescence analysis of PDE6D (green) showing staining in the cytoplasm and nucleus of B-3 cells (right) compared to a negative control without primary antibody (left). Formalin-fixed cells were permeabilized with 0.1% Triton X-100 in TBS for 5-10 minutes and blocked with 3% BSA-PBS for 30 minutes at room temperature. Cells were incubated with **ab5665** in 3% BSA-PBS at a dilution of 1:100 and incubated overnight at 4 °C in a humidified chamber. Cells were washed with PBST and incubated with a DyLight-conjugated secondary antibody in PBS at room temperature in the dark. F-actin (red) was stained with a fluorescent red phalloidin and nuclei (blue) were stained with Hoechst or DAPI. Images were taken at a magnification of 60x.



Immunocytochemistry/ Immunofluorescence - Anti-PDE6D antibody (ab5665)

Immunocytochemistry/Immunofluorescence analysis of PDE6D (green) showing staining in the cytoplasm and nucleus of BAEC cells (right) compared to a negative control without primary antibody (left). Formalin-fixed cells were permeabilized with 0.1% Triton X-100 in TBS for 5-10 minutes and blocked with 3% BSA-PBS for 30 minutes at room temperature. Cells were incubated with ab5665 in 3% BSA-PBS at a dilution of 1:100 and incubated overnight at 4 °C in a humidified chamber. Cells were washed with PBST and incubated with a DyLight-conjugated secondary antibody in PBS at room temperature in the dark. F-actin (red) was stained with a fluorescent red phalloidin and nuclei (blue) were stained with Hoechst or DAPI. Images were taken at a magnification of 60x.

Please note: All products are "FOR RESEARCH USE ONLY. NOT FOR USE IN DIAGNOSTIC PROCEDURES"

Our Abpromise to you: Quality guaranteed and expert technical support

- Replacement or refund for products not performing as stated on the datasheet
- Valid for 12 months from date of delivery
- Response to your inquiry within 24 hours

- We provide support in Chinese, English, French, German, Japanese and Spanish
- Extensive multi-media technical resources to help you
- We investigate all quality concerns to ensure our products perform to the highest standards

If the product does not perform as described on this datasheet, we will offer a refund or replacement. For full details of the Abpromise, please visit <https://www.abcam.co.jp/abpromise> or contact our technical team.

Terms and conditions

- Guarantee only valid for products bought direct from Abcam or one of our authorized distributors