


Anti-PDE6 alpha antibody ab5659

[14 References](#) [画像数 2](#)

製品の概要

製品名	Anti-PDE6 alpha antibody
製品の詳細	Rabbit polyclonal to PDE6 alpha
由来種	Rabbit
アプリケーション	適用あり: IHC-P, WB
種交差性	交差種: Sheep, Human 交差が予測される動物種: Dog 
免疫原	Synthetic peptide corresponding to Human PDE6 alpha aa 1-16. Sequence: MGEVTAEVEKFLDSN (Peptide available as ab5862)

 [Run BLAST with](#)

 [Run BLAST with](#)

特記事項

The Life Science industry has been in the grips of a reproducibility crisis for a number of years. Abcam is leading the way in addressing this with our range of recombinant monoclonal antibodies and knockout edited cell lines for gold-standard validation. Please check that this product meets your needs before purchasing.

If you have any questions, special requirements or concerns, please send us an inquiry and/or contact our Support team ahead of purchase. Recommended alternatives for this product can be found below, along with publications, customer reviews and Q&As

製品の特性

製品の状態	Liquid
保存方法	Shipped at 4°C. Store at +4°C short term (1-2 weeks). Upon delivery aliquot. Store at -20°C or -80°C. Avoid freeze / thaw cycle.
バッファー	Preservative: 0.05% Sodium azide Constituents: 99% PBS, 0.1% BSA
精製度	Immunogen affinity purified
ポリ/モノ	ポリクローナル
アイソタイプ	IgG

アプリケーション

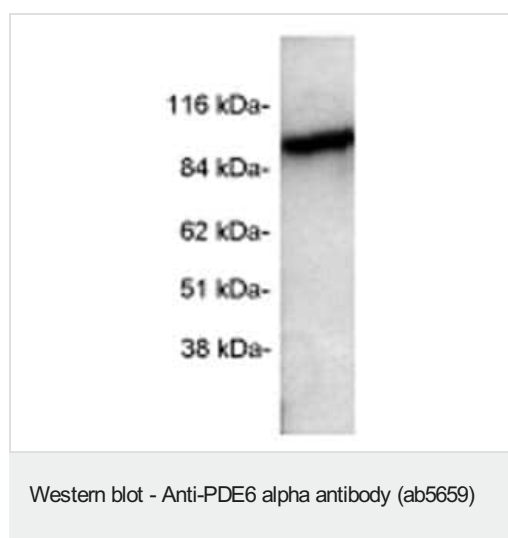
The Abpromise guarantee Abpromise保証は、次のテスト済みアプリケーションにおけるab5659の使用に適用されます
アプリケーションノートには、推奨の開始希釈率がありますが、適切な希釈率につきましてはご検討ください。

アプリケーション	Abreviews	特記事項
IHC-P		Use a concentration of 5 µg/ml. Perform heat mediated antigen retrieval with citrate buffer pH 6 before commencing with IHC staining protocol.
WB		Use a concentration of 1 - 2 µg/ml. Detects a band of approximately 90 kDa. representing PDE6 alpha from sheep retinal extract. A higher molecular weight band is sometimes observed using sheep retinal extracts. See Guo et al, Kerov et al for details of WB procedure.

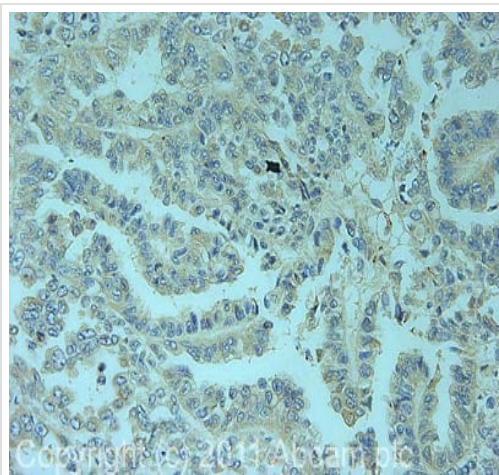
ターゲット情報

機能	This protein participates in processes of transmission and amplification of the visual signal.
関連疾患	Defects in PDE6A are the cause of retinitis pigmentosa type 43 (RP43) [MIM:613810]. RP43 is a retinal dystrophy belonging to the group of pigmentary retinopathies. Retinitis pigmentosa is characterized by retinal pigment deposits visible on fundus examination and primary loss of rod photoreceptor cells followed by secondary loss of cone photoreceptors. Patients typically have night vision blindness and loss of midperipheral visual field. As their condition progresses, they lose their far peripheral visual field and eventually central vision as well.
配列類似性	Belongs to the cyclic nucleotide phosphodiesterase family. Contains 2 GAF domains.
細胞内局在	Cell membrane.

画像



Western blot of PDE6 alpha on sheep retinal extracts using ab5659.



Immunohistochemistry (Formalin/PFA-fixed paraffin-embedded sections) - Anti-PDE6 alpha antibody (ab5659)

IHC image of ab5659 staining in human renal carcinoma formalin fixed paraffin embedded tissue section, performed on a Leica Bond™ system using the standard protocol F. The section was pre-treated using heat mediated antigen retrieval with sodium citrate buffer (pH6, epitope retrieval solution 1) for 20 mins. The section was then incubated with ab5659, 5µg/ml, for 15 mins at room temperature and detected using an HRP conjugated compact polymer system. DAB was used as the chromogen. The section was then counterstained with haematoxylin and mounted with DPX.

For other IHC staining systems (automated and non-automated) customers should optimize variable parameters such as antigen retrieval conditions, primary antibody concentration and antibody incubation times.

Please note: All products are "FOR RESEARCH USE ONLY. NOT FOR USE IN DIAGNOSTIC PROCEDURES"

Our Abpromise to you: Quality guaranteed and expert technical support

- Replacement or refund for products not performing as stated on the datasheet
- Valid for 12 months from date of delivery
- Response to your inquiry within 24 hours
- We provide support in Chinese, English, French, German, Japanese and Spanish
- Extensive multi-media technical resources to help you
- We investigate all quality concerns to ensure our products perform to the highest standards

If the product does not perform as described on this datasheet, we will offer a refund or replacement. For full details of the Abpromise, please visit <https://www.abcam.co.jp/abpromise> or contact our technical team.

Terms and conditions

- Guarantee only valid for products bought direct from Abcam or one of our authorized distributors