


Anti-PDE4D (phospho S190) antibody ab59212

[1 Abreviews](#) [2 References](#) [画像数 2](#)

製品の概要

製品名	Anti-PDE4D (phospho S190) antibody
製品の詳細	Rabbit polyclonal to PDE4D (phospho S190)
由来種	Rabbit
アプリケーション	適用あり: IHC-P, WB
種交差性	交差種: Human 交差が予測される動物種: Mouse, Rat 
免疫原	Synthetic peptide corresponding to Human PDE4D aa 150-250 (phospho S190). (R-E-SP-F-L). Database link: Q08499
ポジティブ・コントロール	IHC-P: Human colon carcinoma tissue WB: K562 cell extracts treated with H ₂ O ₂ (100uM, 30mins).
特記事項	<p>The Life Science industry has been in the grips of a reproducibility crisis for a number of years. Abcam is leading the way in addressing this with our range of recombinant monoclonal antibodies and knockout edited cell lines for gold-standard validation. Please check that this product meets your needs before purchasing.</p> <p>If you have any questions, special requirements or concerns, please send us an inquiry and/or contact our Support team ahead of purchase. Recommended alternatives for this product can be found below, along with publications, customer reviews and Q&As</p>

製品の特性

製品の状態	Liquid
保存方法	Shipped at 4°C. Store at -20°C. Stable for 12 months at -20°C.
バッファー	pH: 7.40 Preservative: 0.02% Sodium azide Constituents: PBS, 50% Glycerol (glycerin, glycerine), 0.87% Sodium chloride
	Without Mg+2 and Ca+2
精製度	Immunogen affinity purified
特記事項 (精製)	ab59212 was affinity purified from rabbit antiserum by affinity chromatography using epitope specific phosphopeptide. The antibody against non phosphopeptide was removed by chromatography using non phosphopeptide corresponding to the phosphorylation site.

ポリモノ ポリクローナル
アイソタイプ IgG

アプリケーション

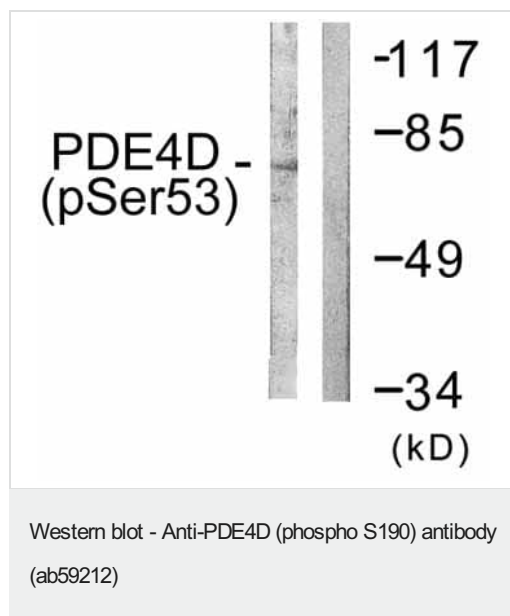
The Abpromise guarantee **Abpromise保証は、次のテスト済みアプリケーションにおけるab59212の使用に適用されます**
アプリケーションノートには、推奨の開始希釈率がありますが、適切な希釈率につきましてはご検討ください。

アプリケーション	Abreviews	特記事項
IHC-P		1/50 - 1/100.
WB		1/500 - 1/1000. Detects a band of approximately 75 kDa (predicted molecular weight: 91 kDa).

ターゲット情報

機能	Hydrolyzes the second messenger cAMP, which is a key regulator of many important physiological processes.
組織特異性	Widespread; most abundant in skeletal muscle. Isoform 6 is detected in brain. Isoform 8 is detected in brain, placenta, lung and kidney. Isoform 7 is detected in heart and skeletal muscle.
パスウェイ	Purine metabolism; 3',5'-cyclic AMP degradation; AMP from 3',5'-cyclic AMP: step 1/1.
関連疾患	Note=Genetic variations in PDE4D might be associated with susceptibility to stroke. PubMed:17006457 states that association with stroke has to be considered with caution.
配列類似性	Belongs to the cyclic nucleotide phosphodiesterase family. PDE4 subfamily.
翻訳後修飾	Isoform 3 and isoform 7 are activated by phosphorylation (in vitro), but not isoform 6. Isoform N3 and isoform 12 are phosphorylated on Ser-49, Ser-51, Ser-55 and Ser-59.
細胞内局在	Cytoplasm. Membrane. Cytoplasm > cytoskeleton. Cytoplasm > cytoskeleton > centrosome. Found in the soluble fraction, associated with membranes, and associated with the cytoskeleton and the centrosome.

画像



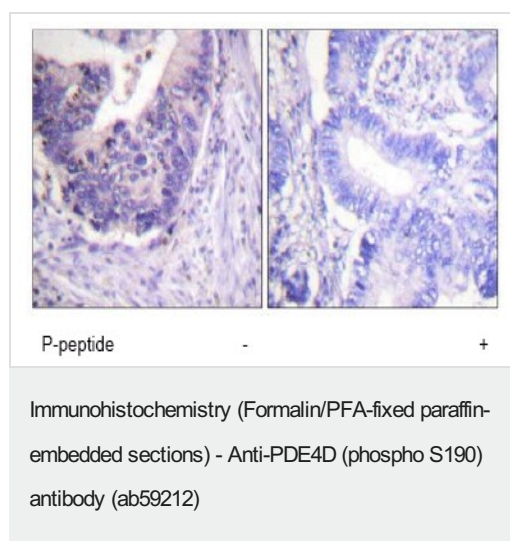
All lanes : Anti-PDE4D (phospho S190) antibody (ab59212) at 1/500 dilution

Lane 1 : K562 cell extract treated with H₂O₂ (100uM, 30mins)

Lane 2 : K562 cell extract treated with H₂O₂ (100uM, 30mins) with immunising peptide

Predicted band size: 91 kDa

Observed band size: 75 kDa



ab59212, at 1/50 dilution, staining PDE4D in paraffin embedded human colon carcinoma tissue by Immunohistochemistry in the absence or presence of the immunising peptide.

Please note: All products are "FOR RESEARCH USE ONLY. NOT FOR USE IN DIAGNOSTIC PROCEDURES"

Our Abpromise to you: Quality guaranteed and expert technical support

- Replacement or refund for products not performing as stated on the datasheet
- Valid for 12 months from date of delivery
- Response to your inquiry within 24 hours
- We provide support in Chinese, English, French, German, Japanese and Spanish
- Extensive multi-media technical resources to help you
- We investigate all quality concerns to ensure our products perform to the highest standards

If the product does not perform as described on this datasheet, we will offer a refund or replacement. For full details of the Abpromise, please visit <https://www.abcam.co.jp/abpromise> or contact our technical team.

Terms and conditions

- Guarantee only valid for products bought direct from Abcam or one of our authorized distributors