

Anti-PDE4D antibody ab14613

★★★★★ [2 Abreviews](#) [18 References](#) [画像数 2](#)

製品の概要

製品名	Anti-PDE4D antibody
製品の詳細	Rabbit polyclonal to PDE4D
由来種	Rabbit
特異性	ab14613 labels all PDE4D proteins including PDE4D1, PDE4D2, PDE4D3, PDE4D4, PDE4D5 variants. Does not cross react with PDE4A, PDE4B, PDE4D6, PDE4D7, PDE4D8, PDE4D9 or PDE4C. The antibody has not been tested against endogenous PDE4D, only recombinant proteins and we therefore cannot guarantee it will detect endogenous PDE4.
アプリケーション	適用あり: WB, IHC-P
種交差性	交差種: Human
免疫原	Synthetic peptide corresponding to PDE4D. C-terminal cyclic peptide unique to all PDE4D subtypes variants. (Peptide available as ab169991)
特記事項	<p>The Life Science industry has been in the grips of a reproducibility crisis for a number of years. Abcam is leading the way in addressing this with our range of recombinant monoclonal antibodies and knockout edited cell lines for gold-standard validation. Please check that this product meets your needs before purchasing.</p> <p>If you have any questions, special requirements or concerns, please send us an inquiry and/or contact our Support team ahead of purchase. Recommended alternatives for this product can be found below, along with publications, customer reviews and Q&As</p>

製品の特性

製品の状態	Liquid
保存方法	Shipped at 4°C. Store at +4°C short term (1-2 weeks). Upon delivery aliquot. Store at -20°C or -80°C. Avoid freeze / thaw cycle.
バッファー	Preservative: 0.02% Sodium azide
精製度	Immunogen affinity purified
ポリ/モノ	ポリクローナル
アイソタイプ	IgG

アプリケーション

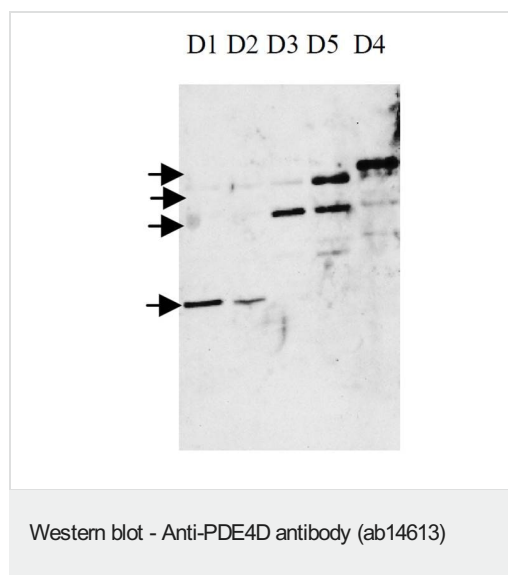
The Abpromise guarantee Abpromise保証は、次のテスト済みアプリケーションにおけるab14613の使用に適用されます
アプリケーションノートには、推奨の開始希釈率がありますが、適切な希釈率につきましてはご検討ください。

アプリケーション	Abreviews	特記事項
WB	★★★★☆ (1)	1/500.
IHC-P		Use at an assay dependent concentration.

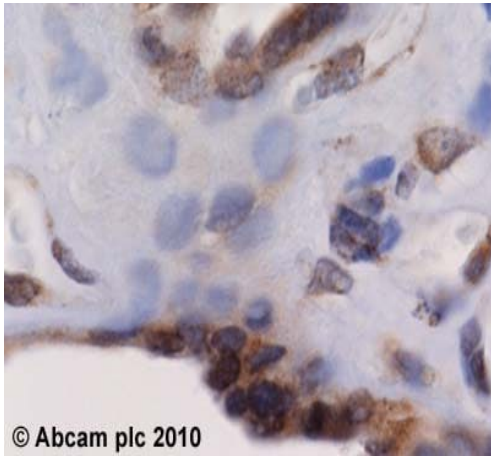
ターゲット情報

機能	Hydrolyzes the second messenger cAMP, which is a key regulator of many important physiological processes.
組織特異性	Widespread; most abundant in skeletal muscle. Isoform 6 is detected in brain. Isoform 8 is detected in brain, placenta, lung and kidney. Isoform 7 is detected in heart and skeletal muscle.
パスウェイ	Purine metabolism; 3',5'-cyclic AMP degradation; AMP from 3',5'-cyclic AMP: step 1/1.
関連疾患	Note=Genetic variations in PDE4D might be associated with susceptibility to stroke. PubMed:17006457 states that association with stroke has to be considered with caution.
配列類似性	Belongs to the cyclic nucleotide phosphodiesterase family. PDE4 subfamily.
翻訳後修飾	Isoform 3 and isoform 7 are activated by phosphorylation (in vitro), but not isoform 6. Isoform N3 and isoform 12 are phosphorylated on Ser-49, Ser-51, Ser-55 and Ser-59.
細胞内局在	Cytoplasm. Membrane. Cytoplasm > cytoskeleton. Cytoplasm > cytoskeleton > centrosome. Found in the soluble fraction, associated with membranes, and associated with the cytoskeleton and the centrosome.

画像



Western blot using ab14613 and positive controls for PDE4D variants.



Immunohistochemistry (Formalin/PFA-fixed paraffin-embedded sections) - Anti-PDE4D antibody (ab14613)

ab14613 (2µg/ml) staining PDE4D in human placenta using an automated system (DAKO Autostainer Plus). Using this protocol there is strong staining of the cytoplasm.

Sections were rehydrated and antigen retrieved with the Dako 3 in 1 AR buffer EDTA pH 9.0 in a DAKO PT link. Slides were peroxidase blocked in 3% H₂O₂ in methanol for 10 mins. They were then blocked with Dako Protein block for 10 minutes (containing casein 0.25% in PBS) then incubated with primary antibody for 20 min and detected with Dako envision flex amplification kit for 30 minutes. Colorimetric detection was completed with Diaminobenzidine for 5 minutes. Slides were counterstained with Haematoxylin and coverslipped under DePeX. Please note that, for manual staining, optimization of primary antibody concentration and incubation time is recommended. Signal amplification may be required.

Please note: All products are "FOR RESEARCH USE ONLY. NOT FOR USE IN DIAGNOSTIC PROCEDURES"

Our Abpromise to you: Quality guaranteed and expert technical support

- Replacement or refund for products not performing as stated on the datasheet
- Valid for 12 months from date of delivery
- Response to your inquiry within 24 hours
- We provide support in Chinese, English, French, German, Japanese and Spanish
- Extensive multi-media technical resources to help you
- We investigate all quality concerns to ensure our products perform to the highest standards

If the product does not perform as described on this datasheet, we will offer a refund or replacement. For full details of the Abpromise, please visit <https://www.abcam.co.jp/abpromise> or contact our technical team.

Terms and conditions

- Guarantee only valid for products bought direct from Abcam or one of our authorized distributors