

Anti-PDE4 antibody ab14628

17 References [画像数 2](#)

医薬用外劇物

製品の概要

製品名	Anti-PDE4 antibody
製品の詳細	Rabbit polyclonal to PDE4
由来種	Rabbit
特異性	This antibody detects all known PDE4 A and D variants including PDE4A1, A5, Ax, A8 and PDE4D1-D5. It has low affinity for PDE4B variants.
アプリケーション	適用あり: WB, ICC/IF
種交差性	交差種: Mouse, Rat, Human
免疫原	Synthetic peptide. This information is proprietary to Abcam and/or its suppliers.
ポジティブ・コントロール	Rat brain.
特記事項	<p>The Life Science industry has been in the grips of a reproducibility crisis for a number of years. Abcam is leading the way in addressing this with our range of recombinant monoclonal antibodies and knockout edited cell lines for gold-standard validation. Please check that this product meets your needs before purchasing.</p> <p>If you have any questions, special requirements or concerns, please send us an inquiry and/or contact our Support team ahead of purchase. Recommended alternatives for this product can be found below, along with publications, customer reviews and Q&As</p>

製品の特性

製品の状態	Liquid
保存方法	Shipped at 4°C. Store at +4°C short term (1-2 weeks). Upon delivery aliquot. Store at -20°C or -80°C. Avoid freeze / thaw cycle.
バッファー	Preservative: 0.02% Thimerosal (merthiolate)
精製度	Immunogen affinity purified
ポリ/モノ	ポリクローナル
アイソタイプ	IgG

アプリケーション

The Abpromise guarantee

Abpromise保証は、次のテスト済みアプリケーションにおけるab14628の使用に適用されます

アプリケーションノートには、推奨の開始希釈率がありますが、適切な希釈率につきましてはご確認ください。

アプリケーション	Abreviews	特記事項
WB		Use at an assay dependent dilution.
ICC/IF		Use a concentration of 1 µg/ml.

ターゲット情報

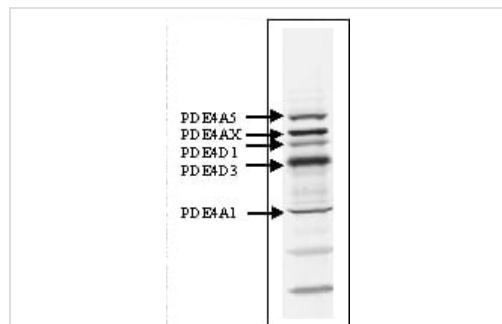
関連性

The cAMP-specific Phosphodiesterase type 4 (PDE4) family is comprised of 4 genes (PDE4 A, B, C and D) with multiple splice variants generated by RNA splicing and use of alternate initiation sites. The cAMP-dependent protein kinase A modulates the enzyme activity of some PDE4 family members by phosphorylation / dephosphorylation mechanisms. Such short-term regulatory mechanisms are necessary for rapid changes in the cAMP levels in cells. PDE4 family selective inhibitor, rolipram inhibits all members of the PDE4 family. In rodents inhibition of PDE4 enzymes by rolipram attenuated short- and long-term memory impairment produced by the administration of scopolamine and MK801. Interaction of these enzymes with cellular scaffolding proteins plays important role in PDE4 compartmentalization and cAMP-dependent signaling.

細胞内局在

Cell Membrane

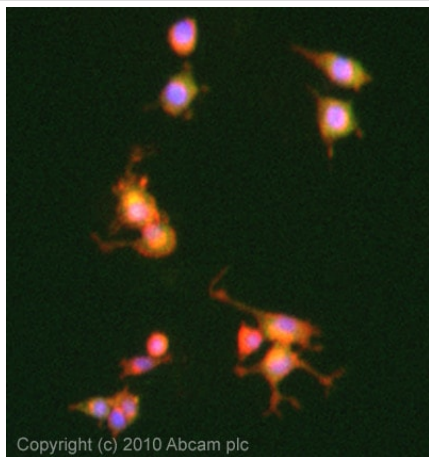
画像



Western blot - Anti-PDE4 antibody (ab14628)

ab 14628 detecting 3 isoforms of PDE4A subclasses (PDE4A1, PDE4A5 and PDE4Ax), two isoforms of PDE4D (PDE4D1, PDE4D3) in rat brain by Western blot.

ab 14628 detecting 3 isoforms of PDE4A subclasses (PDE4A1, PDE4A5 and PDE4Ax) and two isoforms of PDE4D (PDE4D1, PDE4D3) in rat brain by Western blot.



ICC/IF image of ab14628 stained PC12 cells. The cells were 4% formaldehyde fixed (10 min) and then incubated in 1%BSA / 10% normal goat serum / 0.3M glycine in 0.1% PBS-Tween for 1h to permeabilise the cells and block non-specific protein-protein interactions. The cells were then incubated with the antibody (ab14628, 1µg/ml) overnight at +4°C. The secondary antibody (green) was Alexa Fluor® 488 goat anti-rabbit IgG (H+L) used at a 1/1000 dilution for 1h. Alexa Fluor® 594 WGA was used to label plasma membranes (red) at a 1/200 dilution for 1h. DAPI was used to stain the cell nuclei (blue) at a concentration of 1.43µM.

Immunocytochemistry/ Immunofluorescence - Anti-PDE4 antibody (ab14628)

Please note: All products are "FOR RESEARCH USE ONLY. NOT FOR USE IN DIAGNOSTIC PROCEDURES"

Our Abpromise to you: Quality guaranteed and expert technical support

- Replacement or refund for products not performing as stated on the datasheet
- Valid for 12 months from date of delivery
- Response to your inquiry within 24 hours
- We provide support in Chinese, English, French, German, Japanese and Spanish
- Extensive multi-media technical resources to help you
- We investigate all quality concerns to ensure our products perform to the highest standards

If the product does not perform as described on this datasheet, we will offer a refund or replacement. For full details of the Abpromise, please visit <https://www.abcam.co.jp/abpromise> or contact our technical team.

Terms and conditions

- Guarantee only valid for products bought direct from Abcam or one of our authorized distributors