

# Anti-PDE3B antibody [SMCP3B] ab95814

## 1 References [画像数 1](#)

### 製品の概要

---

製品名	Anti-PDE3B antibody [SMCP3B]
製品の詳細	Rat monoclonal [SMCP3B] to PDE3B
由来種	Rat
特異性	ab95814 is specific to PDE3B. It does not react with PDE3A.
アプリケーション	<b>適用あり:</b> WB
種交差性	<b>交差種:</b> Mouse <b>非交差種:</b> Human
免疫原	Recombinant fragment, corresponding to C terminal amino acids 643-1100 of Mouse PDE3B expressed in <i>E. coli</i> .
ポジティブ・コントロール	Mouse heart lysate; Mouse lymph node cell lysate
特記事項	<p>The Life Science industry has been in the grips of a reproducibility crisis for a number of years. Abcam is leading the way in addressing this with our range of recombinant monoclonal antibodies and knockout edited cell lines for gold-standard validation. Please check that this product meets your needs before purchasing.</p> <p>If you have any questions, special requirements or concerns, please send us an inquiry and/or contact our Support team ahead of purchase. Recommended alternatives for this product can be found below, along with publications, customer reviews and Q&amp;As</p>

### 製品の特性

---

製品の状態	Liquid
保存方法	Shipped at 4°C. Store at +4°C short term (1-2 weeks). Store at -20°C or -80°C. Avoid freeze / thaw cycle.
バッファー	pH: 7.20 Preservative: 0.09% Sodium azide Constituent: 2.68% PBS
精製度	Protein G purified
ポリ/モノ	モノクローナル
クローン名	SMCP3B
アイソタイプ	IgG2a

## アプリケーション

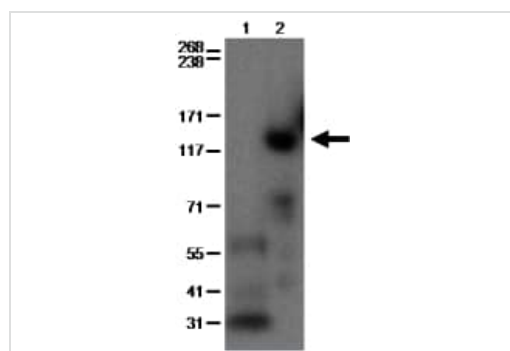
**The Abpromise guarantee** **Abpromise保証は、次のテスト済みアプリケーションにおけるab95814の使用に適用されます**  
 アプリケーションノートには、推奨の開始希釈率がありますが、適切な希釈率につきましてはご確認ください。

アプリケーション	Abreviews	特記事項
WB		Use a concentration of 1 - 5 µg/ml. Predicted molecular weight: 124 kDa.

## ターゲット情報

<b>機能</b>	Cyclic nucleotide phosphodiesterase with a dual-specificity for the second messengers cAMP and cGMP, which are key regulators of many important physiological processes. May play a role in fat metabolism.
<b>組織特異性</b>	Abundant in adipose tissues.
<b>配列類似性</b>	Belongs to the cyclic nucleotide phosphodiesterase family, PDE3 subfamily.
<b>細胞内局在</b>	Membrane.

## 画像



Western blot - Anti-PDE3B antibody [SMCP3B]  
(ab95814)

**All lanes** : Anti-PDE3B antibody [SMCP3B] (ab95814) at 2 µg/ml

**Lane 1** : Mouse heart cell lysate

**Lane 2** : Mouse lymph node cell lysate

**Secondary**

**All lanes** : Anti-Rat IgG HRP

Performed under reducing conditions.

**Predicted band size:** 124 kDa

Run on a 3-8% Tris-Acetate gel.

**Please note:** All products are "FOR RESEARCH USE ONLY. NOT FOR USE IN DIAGNOSTIC PROCEDURES"

**Our Abpromise to you: Quality guaranteed and expert technical support**

- Replacement or refund for products not performing as stated on the datasheet
- Valid for 12 months from date of delivery
- Response to your inquiry within 24 hours
  
- We provide support in Chinese, English, French, German, Japanese and Spanish
- Extensive multi-media technical resources to help you
- We investigate all quality concerns to ensure our products perform to the highest standards

If the product does not perform as described on this datasheet, we will offer a refund or replacement. For full details of the Abpromise, please visit <https://www.abcam.co.jp/abpromise> or contact our technical team.

### **Terms and conditions**

---

- Guarantee only valid for products bought direct from Abcam or one of our authorized distributors