


### Anti-PDCD6/ALG-2 antibody [EP3259] ab109181

KO 評価済 リコンビナント RabMAb

4 References 画像数 5

#### 製品の概要

製品名	Anti-PDCD6/ALG-2 antibody [EP3259]
製品の詳細	Rabbit monoclonal [EP3259] to PDCD6/ALG-2
由来種	Rabbit
アプリケーション	<b>適用あり:</b> WB, IHC-P <b>適用なし:</b> Flow Cyt, ICC/IF or IP
種交差性	<b>交差種:</b> Human <b>交差が予測される動物種:</b> Mouse, Rat 
免疫原	Synthetic peptide. This information is proprietary to Abcam and/or its suppliers.
ポジティブ・コントロール	WB: Daudi, Jurkat, HeLa and 293T cell lysates. IHC-P: Human hepatoma and Human lung adenocarcinoma.
特記事項	This product is a recombinant monoclonal antibody, which offers several advantages including: <ul style="list-style-type: none"> <li>- High batch-to-batch consistency and reproducibility</li> <li>- Improved sensitivity and specificity</li> <li>- Long-term security of supply</li> <li>- Animal-free production</li> </ul> For more information <a href="#">see here</a> . Our RabMAb <sup>®</sup> technology is a patented hybridoma-based technology for making rabbit monoclonal antibodies. For details on our patents, please refer to <a href="#">RabMAb<sup>®</sup> patents</a> .

#### 製品の特性

製品の状態	Liquid
保存方法	Shipped at 4°C. Store at -20°C. Stable for 12 months at -20°C.
バッファー	pH: 7.20 Preservative: 0.01% Sodium azide Constituents: 9% PBS, 40% Glycerol (glycerin, glycerine), 0.05% BSA, 50% Tissue culture supernatant
精製度	Protein A purified
ポリ/モノ	モノクローナル

クローン名 EP3259  
アイソタイプ IgG

#### アプリケーション

**The Abpromise guarantee** Abpromise保証は、 次のテスト済みアプリケーションにおけるab109181の使用に適用されます  
アプリケーションノートには、推奨の開始希釈率がありますが、適切な希釈率につきましてはご検討ください。

アプリケーション	Abreviews	特記事項
WB		1/1000 - 1/2000. Detects a band of approximately 22 kDa (predicted molecular weight: 21 kDa).
IHC-P		1/100 - 1/250. Perform heat mediated antigen retrieval with citrate buffer pH 6 before commencing with IHC staining protocol.

**追加情報** Is unsuitable for Flow Cyt, ICC/IF or IP.

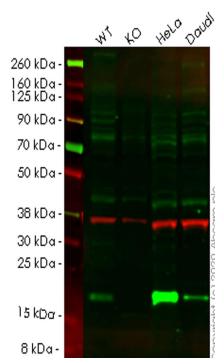
#### ターゲット情報

**機能** Calcium-binding protein required for T-cell receptor-, Fas-, and glucocorticoid-induced cell death. May mediate Ca(2+)-regulated signals along the death pathway (By similarity). Calcium-dependent adapter necessary for the association between PDCD6IP and TSG101. Interaction with DAPK1 can accelerate apoptotic cell death by increasing caspase-3 activity. May inhibit KDR/VEGFR2-dependent angiogenesis; the function involves inhibition of VEGF-induced phosphorylation of the Akt signaling pathway. Seems to play a role in the regulation of the distribution and function of MCOLN1 in the endosomal pathway. Isoform 2 has a lower Ca(2+) affinity than isoform 1. Isoform 1 and, to a lesser extend, isoform 2, can stabilize SHISA5.

**配列類似性** Contains 5 EF-hand domains.

**細胞内局在** Nucleus membrane. Endoplasmic reticulum membrane. Nucleus. Endosome. Interaction with RBM22 induces relocalization from the cytoplasm to the nucleus. Translocated from the cytoplasm to the nucleus after heat shock cell treatment. Accumulates in cytoplasmic vesicle-like organelles after heat shock treatment, which may represent stress granules.

#### 画像



Western blot - Anti-PDCD6/ALG-2 antibody  
[EP3259] (ab109181)

**All lanes :** Anti-PDCD6/ALG-2 antibody [EP3259] (ab109181) at 1/1000 dilution

**Lane 1 :** Wild-type HEK293T cell lysate

**Lane 2 :** PDCD6 knockout HEK293T cell lysate

**Lane 3 :** HeLa cell lysate

**Lane 4 :** Daudi cell lysate

Lysates/proteins at 20 µg per lane.

#### Secondary

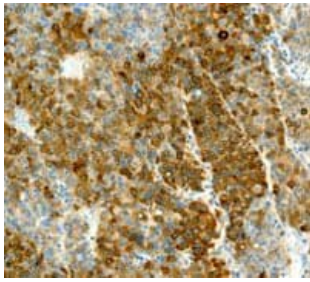
**All lanes :** Goat anti-Rabbit IgG H&L (IRDye® 800CW) preadsorbed ([ab216773](#)) at 1/10000 dilution

**Predicted band size:** 21 kDa

**Observed band size:** 22 kDa

**Lanes 1-4:** Merged signal (red and green). Green - ab109181 observed at 22 kDa. Red - loading control [ab8245](#) observed at 36 kDa.

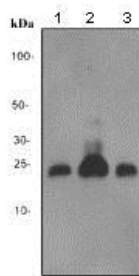
ab109181 Anti-PDCD6/ALG-2 antibody [EP3259] was shown to specifically react with PDCD6/ALG-2 in wild-type HEK293T cells. Loss of signal was observed when knockout cell line [ab266323](#) (knockout cell lysate [ab258570](#)) was used. Wild-type and PDCD6/ALG-2 knockout samples were subjected to SDS-PAGE. ab109181 and Anti-GAPDH antibody [6C5] - Loading Control ([ab8245](#)) were incubated overnight at 4°C at 1 in 1000 dilution and 1 in 20000 dilution respectively. Blots were developed with Goat anti-Rabbit IgG H&L (IRDye® 800CW) preadsorbed ([ab216773](#)) and Goat anti-Mouse IgG H&L (IRDye® 680RD) preadsorbed ([ab216776](#)) secondary antibodies at 1 in 20000 dilution for 1 hour at room temperature before imaging.



Immunohistochemistry (Formalin/PFA-fixed paraffin-embedded sections) - Anti-PDCD6/ALG-2 antibody [EP3259] (ab109181)

Immunohistochemical analysis of paraffin-embedded Human hepatoma using ab109181 at 1/100.

Perform heat mediated antigen retrieval with citrate buffer pH 6 before commencing with IHC staining protocol.



Western blot - Anti-PDCD6/ALG-2 antibody [EP3259] (ab109181)

**All lanes :** Anti-PDCD6/ALG-2 antibody [EP3259] (ab109181) at 1/1000 dilution

**Lane 1 :** Jurkat cell lysate

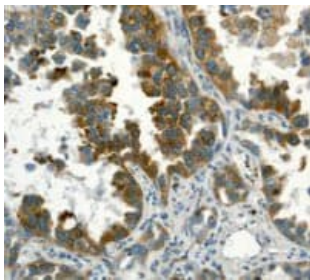
**Lane 2 :** HeLa cell lysate

**Lane 3 :** 293T cell lysate

Lysates/proteins at 10 µg per lane.

**Predicted band size:** 21 kDa

**Observed band size:** 22 kDa



Immunohistochemistry (Formalin/PFA-fixed paraffin-embedded sections) - Anti-PDCD6/ALG-2 antibody [EP3259] (ab109181)

Immunohistochemical analysis of paraffin-embedded Human lung adenocarcinoma using ab109181 at 1/100.

Perform heat mediated antigen retrieval with citrate buffer pH 6 before commencing with IHC staining protocol.

### Why choose a recombinant antibody?



**Research with confidence**  
Consistent and reproducible results



**Long-term and scalable supply**  
Recombinant technology



**Success from the first experiment**  
Confirmed specificity



**Ethical standards compliant**  
Animal-free production

Anti-PDCD6/ALG-2 antibody [EP3259] (ab109181)

**Please note:** All products are "FOR RESEARCH USE ONLY. NOT FOR USE IN DIAGNOSTIC PROCEDURES"

### Our Abpromise to you: Quality guaranteed and expert technical support

---

- Replacement or refund for products not performing as stated on the datasheet
- Valid for 12 months from date of delivery
- Response to your inquiry within 24 hours
- We provide support in Chinese, English, French, German, Japanese and Spanish
- Extensive multi-media technical resources to help you
- We investigate all quality concerns to ensure our products perform to the highest standards

If the product does not perform as described on this datasheet, we will offer a refund or replacement. For full details of the Abpromise, please visit <https://www.abcam.co.jp/abpromise> or contact our technical team.

### Terms and conditions

---

- Guarantee only valid for products bought direct from Abcam or one of our authorized distributors