

### Anti-PDCD4 antibody [EPR3432] ab79405

KO 評価済 リコンビナント RabMAb

10 References 画像数 6

#### 製品の概要

製品名	Anti-PDCD4 antibody [EPR3432]
製品の詳細	Rabbit monoclonal [EPR3432] to PDCD4
由来種	Rabbit
アプリケーション	<b>適用あり:</b> WB, IHC-P, ICC/IF <b>適用なし:</b> IP
種交差性	<b>交差種:</b> Mouse, Human
免疫原	Synthetic peptide. This information is proprietary to Abcam and/or its suppliers.
ポジティブ・コントロール	WB: HeLa, HAP1, and Jurkat whole cell lysate. IHC-P: Human breast carcinoma tissue. ICC/IF: HeLa cells
特記事項	<p>This product is a recombinant monoclonal antibody, which offers several advantages including:</p> <ul style="list-style-type: none"> <li>- High batch-to-batch consistency and reproducibility</li> <li>- Improved sensitivity and specificity</li> <li>- Long-term security of supply</li> <li>- Animal-free production</li> </ul> <p>For more information <a href="#">see here</a>.</p> <p>Our RabMAb<sup>®</sup> technology is a patented hybridoma-based technology for making rabbit monoclonal antibodies. For details on our patents, please refer to <a href="#">RabMAb<sup>®</sup> patents</a>.</p> <p>Rat: We have preliminary internal testing data to indicate this antibody may not react with this species. Please contact us for more information.</p>

#### 製品の特性

製品の状態	Liquid
保存方法	Shipped at 4°C. Store at -20°C. Stable for 12 months at -20°C.
バッファー	<p>pH: 7.20</p> <p>Preservative: 0.05% Sodium azide</p> <p>Constituents: 0.1% BSA, 40% Glycerol (glycerin, glycerine), 9.85% Tris glycine, 50% Tissue culture supernatant</p>
精製度	Protein A purified

ポリ/モノ	モノクローナル
クローン名	EPR3432
アイソタイプ	IgG

## アプリケーション

**The Abpromise guarantee** **Abpromise保証は、**次のテスト済みアプリケーションにおけるab79405の使用に適用されます  
アプリケーションノートには、推奨の開始希釈率がありますが、適切な希釈率につきましてはご検討ください。

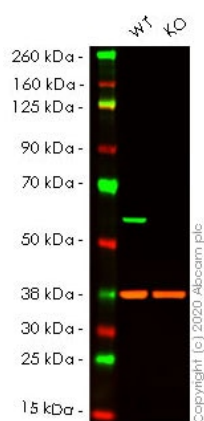
アプリケーション	Abreviews	特記事項
WB		1/5000 - 1/10000. Detects a band of approximately 52 kDa (predicted molecular weight: 52 kDa).
IHC-P		1/1000 - 1/2000. Perform heat mediated antigen retrieval before commencing with IHC staining protocol.
ICC/IF		1/500.

**追加情報** Is unsuitable for IP.

## ターゲット情報

<b>機能</b>	Inhibits translation initiation and cap-dependent translation. May exert its function by hindering the interaction between EIF4A1 and EIF4G. Inhibits the helicase activity of EIF4A. Modulates the activation of JUN kinase. Down-regulates the expression of MAP4K1, thus inhibiting events important in driving invasion, namely, MAPK85 activation and consequent JUN-dependent transcription. May play a role in apoptosis. Tumor suppressor. Inhibits tumor promoter-induced neoplastic transformation. Binds RNA.
<b>組織特異性</b>	Up-regulated in proliferative cells. Highly expressed in epithelial cells of the mammary gland. Reduced expression in lung cancer and colon carcinoma.
<b>配列類似性</b>	Belongs to the PDCD4 family. Contains 2 MI domains.
<b>ドメイン</b>	Binds EIF4A1 via both MI domains.
<b>翻訳後修飾</b>	Polyubiquitinated, leading to its proteasomal degradation. Rapidly degraded in response to mitogens. Phosphorylation of the phosphodegron promotes interaction with BTRC and proteasomal degradation.
<b>細胞内局在</b>	Nucleus. Cytoplasm. Shuttles between the nucleus and cytoplasm. Predominantly nuclear under normal growth conditions, and when phosphorylated at Ser-457. Exported from the nucleus in the absence of serum.

## 画像



Western blot - Anti-PDCD4 antibody [EPR3432]  
(ab79405)

**All lanes** : Anti-PDCD4 antibody [EPR3432] (ab79405) at 1/5000 dilution

**Lane 1** : Wild-type HeLa cell lysate

**Lane 2** : PDCD4 knockout HeLa cell lysate

Lysates/proteins at 20 µg per lane.

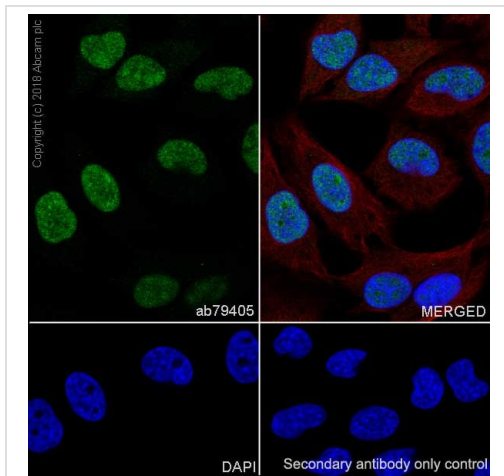
Performed under reducing conditions.

**Predicted band size:** 52 kDa

**Observed band size:** 51 kDa

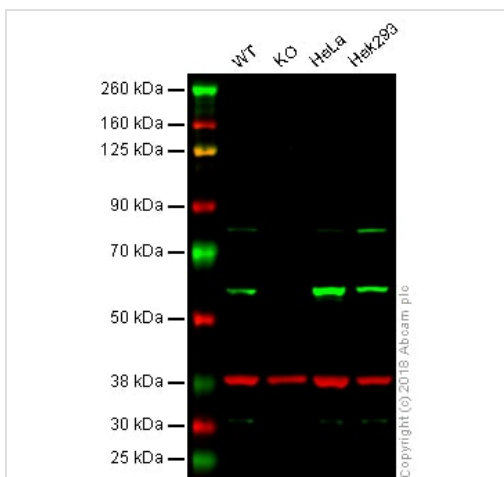
**Lanes 1- 2:** Merged signal (red and green). Green - ab79405 observed at 51 kDa. Red - Anti-GAPDH antibody [6C5] - Loading Control ([ab8245](#)) observed at 37 kDa.

ab79405 was shown to react with PDCD4 in wild-type HeLa cells in western blot. Loss of signal was observed when knockout cell line [ab261833](#) (knockout cell lysate [ab257278](#)) was used. Wild-type HeLa and PDCD4 knockout HeLa cell lysates were subjected to SDS-PAGE. Membrane was blocked for 1 hour at room temperature in 0.1% TBST with 3% non-fat dried milk. ab79405 and Anti-GAPDH antibody [6C5] - Loading Control ([ab8245](#)) overnight at 4°C at a 1 in 5000 dilution and a 1 in 20000 dilution respectively. Blots were developed with Goat anti-Rabbit IgG H&L (IRDye®800CW) preadsorbed ([ab216773](#)) and Goat anti-Mouse IgG H&L (IRDye®680RD) preadsorbed ([ab216776](#)) secondary antibodies at 1 in 20000 dilution for 1 hour at room temperature before imaging.



Immunocytochemistry/ Immunofluorescence - Anti-PDCD4 antibody [EPR3432] (ab79405)

Immunocytochemistry/ Immunofluorescence analysis of HeLa (human cervix adenocarcinoma epithelial cell) cells labeling PDCD4 with purified ab79405 at 1/500 dilution (4 µg/mL). Cells were fixed in 4% Paraformaldehyde and permeabilized with 0.1% tritonX-100. Cells were counterstained with [ab195889](#) Anti-alpha Tubulin antibody [DM1A] - Microtubule Marker (Alexa Fluor® 594) 1/200 (2.5 µg/mL). Goat anti rabbit IgG (Alexa Fluor® 488, [ab150077](#)) was used as the secondary antibody at 1/1000 (2 µg/mL) dilution. DAPI (blue) was used as nuclear counterstain. [ab195889](#) Anti-alpha Tubulin antibody [DM1A] - Microtubule Marker (Alexa Fluor® 594) 1/200 (2.5 µg/mL) was used as the secondary antibody only control.



Western blot - Anti-PDCD4 antibody [EPR3432] (ab79405)

**All lanes :** Anti-PDCD4 antibody [EPR3432] (ab79405) at 1/5000 dilution

**Lane 1 :** Wild-type HAP1 whole cell lysate

**Lane 2 :** PDCD4 knockout HAP1 whole cell lysate

**Lane 3 :** HeLa whole cell lysate

**Lane 4 :** HEK293 whole cell lysate

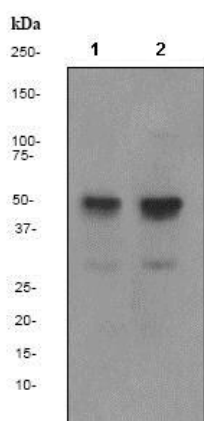
Lysates/proteins at 20 µg per lane.

**Predicted band size:** 52 kDa

**Lanes 1 - 4:** Merged signal (red and green). Green - ab79405 observed at 52 kDa. Red - loading control, [ab9484](#), observed at 37 kDa.

ab79405 was shown to recognize PDCD4 in wild-type HAP1 cells as signal was lost at the expected MW in PDCD4 knockout HAP1 cells. Additional cross-reactive bands were observed in the wild-

type and knockout cells. Wild-type and PDCD4 knockout samples were subjected to SDS-PAGE. ab79405 and [ab9484](#) (Mouse anti-GAPDH loading control) were incubated overnight at 4°C at 1/5000 dilution and 1/20000 dilution respectively. Blots were developed with Goat anti-Rabbit IgG H&L (IRDye® 800CW) preabsorbed [ab216773](#) and Goat anti-Mouse IgG H&L (IRDye® 680RD) preabsorbed [ab216776](#) secondary antibodies at 1/10000 dilution for 1 hour at room temperature before imaging.



Western blot - Anti-PDCD4 antibody [EPR3432] (ab79405)

**All lanes :** Anti-PDCD4 antibody [EPR3432] (ab79405) at 1/10000 dilution

**Lane 1 :** Jurkat cell lysate

**Lane 2 :** HeLa cell lysate

Lysates/proteins at 10 µg per lane.

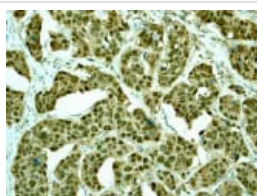
### Secondary

**All lanes :** Goat anti-rabbit HRP at 1/2000 dilution

**Predicted band size:** 52 kDa

**Observed band size:** 52 kDa

**Additional bands at:** 30 kDa. We are unsure as to the identity of these extra bands.




Immunohistochemistry (Formalin/PFA-fixed paraffin-embedded sections) - Anti-PDCD4 antibody [EPR3432] (ab79405)


ab79405 at 1/1000 dilution staining PDCD4 in human breast carcinoma by Immunohistochemistry using paraffin-embedded tissue.

Perform heat mediated antigen retrieval before commencing with IHC staining protocol.


Why choose a recombinant antibody?




**Research with confidence**  
Consistent and reproducible results



**Long-term and scalable supply**  
Recombinant technology



**Success from the first experiment**  
Confirmed specificity



**Ethical standards compliant**  
Animal-free production

Anti-PDCD4 antibody [EPR3432] (ab79405)

**Please note:** All products are "FOR RESEARCH USE ONLY. NOT FOR USE IN DIAGNOSTIC PROCEDURES"

### Our Abpromise to you: Quality guaranteed and expert technical support

- Replacement or refund for products not performing as stated on the datasheet
- Valid for 12 months from date of delivery
- Response to your inquiry within 24 hours
- We provide support in Chinese, English, French, German, Japanese and Spanish
- Extensive multi-media technical resources to help you
- We investigate all quality concerns to ensure our products perform to the highest standards

If the product does not perform as described on this datasheet, we will offer a refund or replacement. For full details of the Abpromise, please visit <https://www.abcam.co.jp/abpromise> or contact our technical team.

### Terms and conditions

- Guarantee only valid for products bought direct from Abcam or one of our authorized distributors