

Anti-PD1 antibody [EPR4877(2)] ab137132

リコンビナント **RabMAb**

★★★★★ **5 Abreviews** **78 References** **画像数 9**

製品の概要

製品名	Anti-PD1 antibody [EPR4877(2)]
製品の詳細	Rabbit monoclonal [EPR4877(2)] to PD1
由来種	Rabbit
アプリケーション	適用あり: IHC-P 適用なし: Flow Cyt or ICC/IF
種交差性	交差種: Human
免疫原	Synthetic peptide within Human PD1 aa 1-100. The exact sequence is proprietary. Database link: Q15116 (Peptide available as ab173374)
ポジティブ・コントロール	IHC-P: Human tonsil tissue.
特記事項	This product is a recombinant monoclonal antibody, which offers several advantages including: <ul style="list-style-type: none"> - High batch-to-batch consistency and reproducibility - Improved sensitivity and specificity - Long-term security of supply - Animal-free production For more information see here . Our RabMAb [®] technology is a patented hybridoma-based technology for making rabbit monoclonal antibodies. For details on our patents, please refer to RabMAb[®] patents . Mouse, Rat: We have preliminary internal testing data to indicate this antibody may not react with these species. Please contact us for more information.

製品の特性

製品の状態	Liquid
保存方法	Shipped at 4°C. Store at +4°C short term (1-2 weeks). Upon delivery aliquot. Store at -20°C. Avoid freeze / thaw cycle.
バッファー	Preservative: 0.01% Sodium azide Constituents: 40% Glycerol (glycerin, glycerine), 0.05% BSA, 59% PBS
精製度	Protein A purified

ポリ/モノ	モノクローナル
クローン名	EPR4877(2)
アイソタイプ	IgG

アプリケーション

The Abpromise guarantee Abpromise保証は、次のテスト済みアプリケーションにおけるab137132の使用に適用されます
アプリケーションノートには、推奨の開始希釈率がありますが、適切な希釈率につきましてはご検討ください。

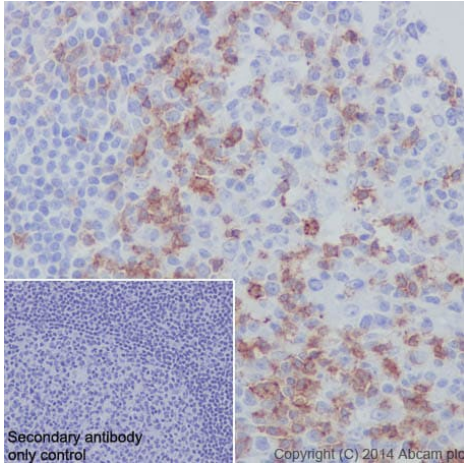
アプリケーション	Abreviews	特記事項
IHC-P	★★★★★ (5)	1/250 - 1/500. Perform heat mediated antigen retrieval before commencing with IHC staining protocol. See <u>IHC antigen retrieval protocols</u> .

追加情報 Is unsuitable for Flow Cyt or ICC/IF.

ターゲット情報

機能	Possible cell death inducer, in association with other factors.
関連疾患	Genetic variation in PDCD1 is associated with susceptibility to systemic lupus erythematosus type 2 (SLEB2) [MIM:605218]. Systemic lupus erythematosus is a chronic, inflammatory and often febrile multisystemic disorder of connective tissue. It affects principally the skin, joints, kidneys and serosal membranes. It is thought to represent a failure of the regulatory mechanisms of the autoimmune system.
配列類似性	Contains 1 Ig-like V-type (immunoglobulin-like) domain.
発生段階	Induced at programmed cell death.
細胞内局在	Membrane.

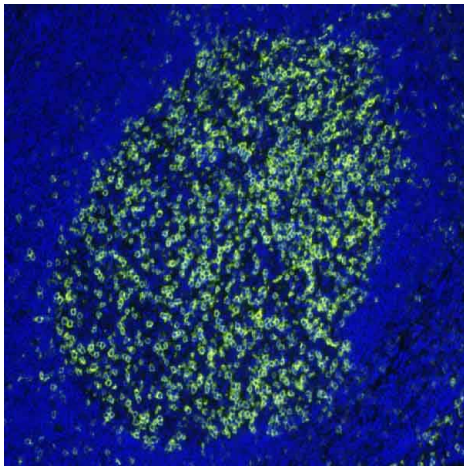
画像



Immunohistochemistry (Formalin/PFA-fixed paraffin-embedded sections) - Anti-PD1 antibody
[EPR4877(2)] (ab137132)

Immunohistochemistry (Formalin/PFA-fixed paraffin-embedded sections) analysis of human tonsil tissue labeling PD1 with purified ab137132 at 1/500. Heat mediated antigen retrieval was performed using Tris/EDTA buffer pH 9. [ab97051](#), an HRP-conjugated goat anti-rabbit IgG (H+L) was used as the secondary antibody (1/500).

Negative control: Secondary antibody only using PBS instead of primary antibody. Counterstained with hematoxylin.

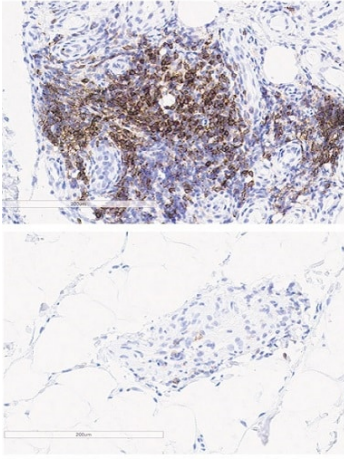


Immunohistochemistry (Formalin/PFA-fixed paraffin-embedded sections) - Anti-PD1 antibody
[EPR4877(2)] (ab137132)

Immunohistochemistry (Formalin/PFA-fixed paraffin-embedded sections) analysis of human tonsil tissue labeling PD1 with ab137132 at a dilution of 1/500. Heat mediated antigen retrieval was performed using EDTA antigen retrieval solution, and microwave treatment for 20 min at 20% power. Anti-Rabbit HRP polymer was used as secondary antibody. Opal tyramide amplification was performed using Opal 540 fluorophore. Counterstained with DAPI stain.

Image scanned with Vectra 3.0 and analyzed via Inform software.

This image was courteously provided by Dr. Houssein Abdul Sater, Georgia Cancer Center.

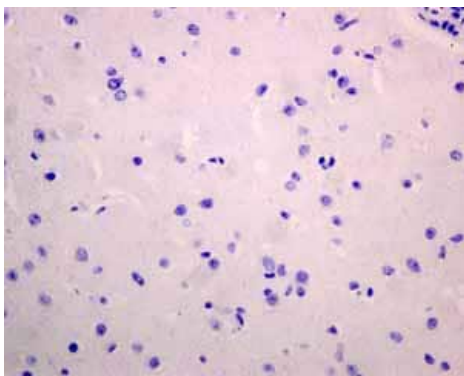


Immunohistochemistry (Formalin/PFA-fixed paraffin-embedded sections) - Anti-PD1 antibody

[EPR4877(2)] (ab137132)

Guo Y et al. Immune checkpoint inhibitor PD-1 pathway is down-regulated in synovium at various stages of rheumatoid arthritis disease progression. PLoS One 13:e0192704 (2018). Fig 4.

Formalin-fixed paraffin-embedded early RA synovial biopsies were cut into 5 μ M sections and mounted on Fisherbrand Superfrost Plus Slides. The sections were stained with anti-CD3 and anti-PD1 (ab137132, Abcam) antibodies. The markers were visualized with 3,3'-diaminobenzidine and the relative expression of each marker was noted. CD3 and PD1 staining was reported as CD3⁺% or PD1⁺% cells within a total magnification of 100x across the entire biopsy section.

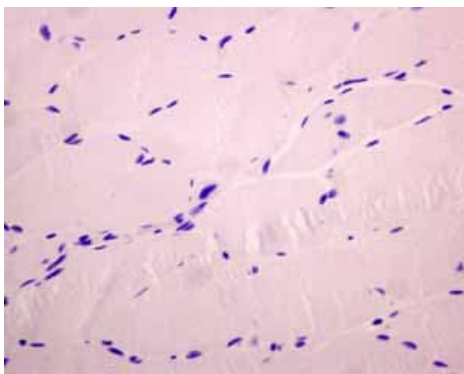


Immunohistochemistry (Formalin/PFA-fixed paraffin-embedded sections) - Anti-PD1 antibody

[EPR4877(2)] (ab137132)

Immunohistochemical analysis using ab137132 (unpurified version) showing **negative staining** in normal human brain tissue.

Perform heat mediated antigen retrieval before commencing with IHC staining protocol.

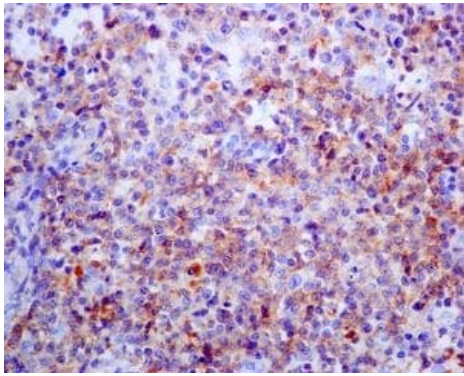


Immunohistochemistry (Formalin/PFA-fixed paraffin-embedded sections) - Anti-PD1 antibody

[EPR4877(2)] (ab137132)

Immunohistochemical analysis using ab137132 (unpurified) showing **negative staining** in human skeletal muscle tissue.

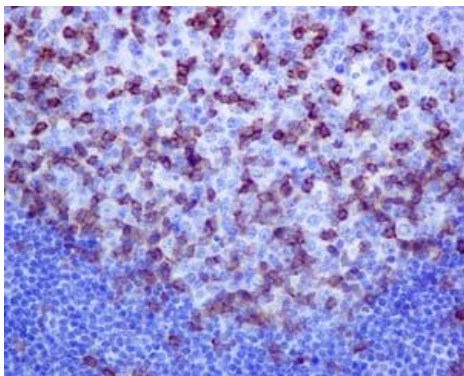
Perform heat mediated antigen retrieval before commencing with IHC staining protocol.



Immunohistochemistry (Formalin/PFA-fixed paraffin-embedded sections) - Anti-PD1 antibody [EPR4877(2)] (ab137132)

Immunohistochemistry (Formalin/PFA-fixed paraffin-embedded sections) analysis of human T-cell lymphoma tissue labeling PD1 with unpurified ab137132 at a dilution of 1/250.

Perform heat mediated antigen retrieval before commencing with IHC staining protocol.



Immunohistochemistry (Formalin/PFA-fixed paraffin-embedded sections) - Anti-PD1 antibody [EPR4877(2)] (ab137132)

Immunohistochemistry (Formalin/PFA-fixed paraffin-embedded sections) analysis of human tonsil tissue labeling PD1 with unpurified ab137132 at a dilution of 1/250.

Perform heat mediated antigen retrieval before commencing with IHC staining protocol.

Normal tissue samples				Malignant tissue samples			
Human cardiac muscle	x	Human placenta	x	Clear cell carcinoma of human kidney	x	Human hepatocellular carcinoma	x
Human cerebrum	x	Human skeletal muscle	x	Human bladder cancer	x (immune cells ✓)	Human lung carcinoma	x (immune cells ✓)
Human colon	x	Human skin	x	Human breast carcinoma	x	Human ovarian carcinoma	x
Human endometrium	x	Human spleen	✓	Human cervical carcinoma	x (immune cells ✓)	Human pancreatic carcinoma	x
Human kidney	x	Human stomach	x (immune cells ✓)	Human colon carcinoma	x	Human prostatic hyperplasia	x
Human liver	x (immune cells ✓)	Human testis	x	Human endometrial carcinoma	x (immune cells ✓)	Human T-cell lymphoma	✓
Human lung	x	Human thyroid	x	Human gastric adenocarcinoma	x (immune cells ✓)	Human thyroid carcinoma	x (immune cells ✓)
Human mammary gland	x	Human tonsil	✓	Human glioma	x		
Human pancreas	x						

Immunohistochemistry (Formalin/PFA-fixed paraffin-embedded sections) - Anti-PD1 antibody [EPR4877(2)] (ab137132)

Tissue Microarrays stained for "Anti-PD1 antibody [EPR4877(2)]" using "ab137132" in immunohistochemical analysis. This table provides a detailed overview of positive (tick mark) and negative (cross mark) staining per sample type tested. The sections were pre-treated using Heat mediated antigen retrieval using Bond™ Epitope Retrieval Solution 2 (pH 9.0) for 20 minutes. The sections were incubated with ab137132 for 30 mins at room temperature followed by a ready to use Rabbit specific IHC polymer detection kit HRP/DAB ([ab209101](#)). The immunostaining was performed on a Leica Biosystems BOND® RX instrument.

Why choose a recombinant antibody?



Research with confidence
Consistent and reproducible results



Long-term and scalable supply
Recombinant technology



Success from the first experiment
Confirmed specificity



Ethical standards compliant
Animal-free production

Anti-PD1 antibody [EPR4877(2)] (ab137132)

Please note: All products are "FOR RESEARCH USE ONLY. NOT FOR USE IN DIAGNOSTIC PROCEDURES"

Our Abpromise to you: Quality guaranteed and expert technical support

- Replacement or refund for products not performing as stated on the datasheet
- Valid for 12 months from date of delivery
- Response to your inquiry within 24 hours
- We provide support in Chinese, English, French, German, Japanese and Spanish
- Extensive multi-media technical resources to help you
- We investigate all quality concerns to ensure our products perform to the highest standards

If the product does not perform as described on this datasheet, we will offer a refund or replacement. For full details of the Abpromise, please visit <https://www.abcam.co.jp/abpromise> or contact our technical team.

Terms and conditions

- Guarantee only valid for products bought direct from Abcam or one of our authorized distributors