

Anti-PD1 antibody ab89828

[5 References](#) [画像数 3](#)

製品の概要

製品名	Anti-PD1 antibody
製品の詳細	Mouse polyclonal to PD1
由来種	Mouse
アプリケーション	適用あり: WB
種交差性	交差種: Human
免疫原	Recombinant full length protein within Human PD1. The exact immunogen sequence used to generate this antibody is proprietary information. If additional detail on the immunogen is needed to determine the suitability of the antibody for your needs, please contact our Scientific Support team to discuss your requirements.
ポジティブ・コントロール	Human stomach tissue lysate; HeLa whole cell lysate (ab150035); PD1 transfected 293T cell lysate
特記事項	<p>The Life Science industry has been in the grips of a reproducibility crisis for a number of years. Abcam is leading the way in addressing this with our range of recombinant monoclonal antibodies and knockout edited cell lines for gold-standard validation. Please check that this product meets your needs before purchasing.</p> <p>If you have any questions, special requirements or concerns, please send us an inquiry and/or contact our Support team ahead of purchase. Recommended alternatives for this product can be found below, along with publications, customer reviews and Q&As</p>

製品の特性

製品の状態	Liquid
保存方法	Shipped at 4°C. Upon delivery aliquot and store at -20°C or -80°C. Avoid repeated freeze / thaw cycles.
バッファー	pH: 7.40 Constituent: 100% PBS
精製度	Protein A purified
ポリ/モノ	ポリクローナル
アイソタイプ	IgG

アプリケーション

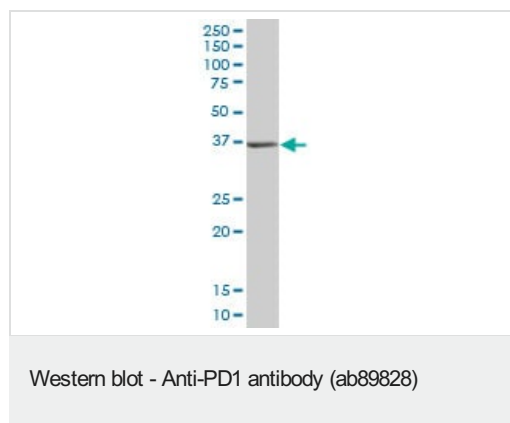
The Abpromise guarantee **Abpromise保証は、次のテスト済みアプリケーションにおけるab89828の使用に適用されず**
アプリケーションノートには、推奨の開始希釈率がありますが、適切な希釈率につきましてはご検討ください。

アプリケーション	Abreviews	特記事項
WB		Use a concentration of 1 µg/ml. Predicted molecular weight: 32 kDa.

ターゲット情報

機能	Possible cell death inducer, in association with other factors.
関連疾患	Genetic variation in PDCD1 is associated with susceptibility to systemic lupus erythematosus type 2 (SLEB2) [MIM:605218]. Systemic lupus erythematosus is a chronic, inflammatory and often febrile multisystemic disorder of connective tissue. It affects principally the skin, joints, kidneys and serosal membranes. It is thought to represent a failure of the regulatory mechanisms of the autoimmune system.
配列類似性	Contains 1 Ig-like V-type (immunoglobulin-like) domain.
発生段階	Induced at programmed cell death.
細胞内局在	Membrane.

画像

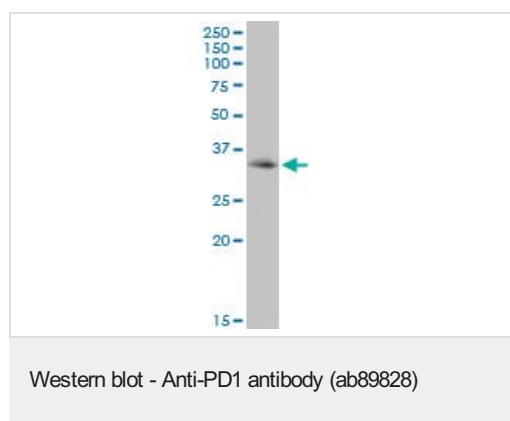


Anti-PD1 antibody (ab89828) at 1 µg/ml + human stomach tissue lysate at 50 µg

Developed using the ECL technique.

Predicted band size: 32 kDa

Observed band size: 37 kDa

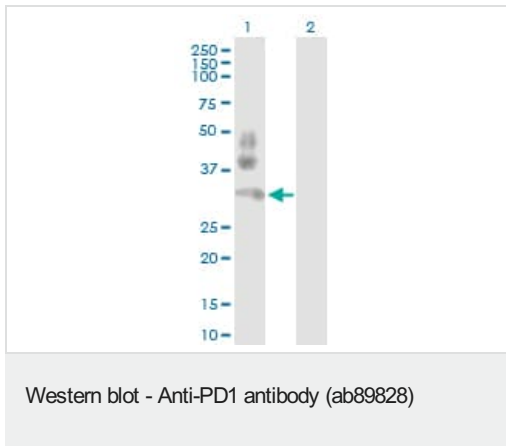


Anti-PD1 antibody (ab89828) at 1 µg/ml + HeLa cell lysate at 50 µg

Developed using the ECL technique.

Predicted band size: 32 kDa

Observed band size: ~32 kDa



All lanes : Anti-PD1 antibody (ab89828) at 1 µg/ml

Lane 1 : PD1 transfected 293T cell lysate

Lane 2 : non transfected 293T cell lysate

Lysates/proteins at 25 µg per lane.

Developed using the ECL technique.

Predicted band size: 32 kDa

Observed band size: 32 kDa

Additional bands at: ~38 kDa, ~45 kDa. We are unsure as to the identity of these extra bands.

Please note: All products are "FOR RESEARCH USE ONLY. NOT FOR USE IN DIAGNOSTIC PROCEDURES"

Our Abpromise to you: Quality guaranteed and expert technical support

- Replacement or refund for products not performing as stated on the datasheet
- Valid for 12 months from date of delivery
- Response to your inquiry within 24 hours
- We provide support in Chinese, English, French, German, Japanese and Spanish
- Extensive multi-media technical resources to help you
- We investigate all quality concerns to ensure our products perform to the highest standards

If the product does not perform as described on this datasheet, we will offer a refund or replacement. For full details of the Abpromise, please visit <https://www.abcam.co.jp/abpromise> or contact our technical team.

Terms and conditions

- Guarantee only valid for products bought direct from Abcam or one of our authorized distributors