

# Anti-PCOLCE antibody - Carboxyterminal end ab39204

**1 References** [画像数 1](#)

### 製品の概要

製品名	Anti-PCOLCE antibody - Carboxyterminal end
製品の詳細	Rabbit polyclonal to PCOLCE - Carboxyterminal end
由来種	Rabbit
特異性	ab39204 recognizes both full sized and cleaved PCOLE1 and does not react with PCOLE2.
アプリケーション	<b>適用あり:</b> WB
種交差性	<b>交差種:</b> Human
免疫原	Synthetic peptide based on the end of CUB2 and the beginning of the "linker" region of Human PCOLCE. (Peptide available as <a href="#">ab41294</a> .)
特記事項	<p>The Life Science industry has been in the grips of a reproducibility crisis for a number of years. Abcam is leading the way in addressing this with our range of recombinant monoclonal antibodies and knockout edited cell lines for gold-standard validation. Please check that this product meets your needs before purchasing.</p> <p>If you have any questions, special requirements or concerns, please send us an inquiry and/or contact our Support team ahead of purchase. Recommended alternatives for this product can be found below, along with publications, customer reviews and Q&amp;As</p>

### 製品の特性

製品の状態	Liquid
保存方法	Shipped at 4°C. Upon delivery aliquot and store at -20°C. Avoid freeze / thaw cycles.
バッファー	Preservative: 0.01% Sodium azide Constituent: 50% Glycerol
精製度	Immunogen affinity purified
ポリ/モノ	ポリクローナル
アイソタイプ	IgG

### アプリケーション

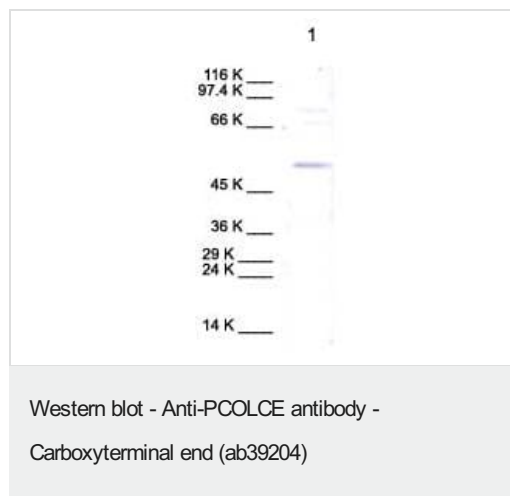
**The Abpromise guarantee**      **Abpromise保証は、次のテスト済みアプリケーションにおけるab39204の使用に適用されます**  
 アプリケーションノートには、推奨の開始希釈率がありますが、適切な希釈率につきましてはご検討ください。

アプリケーション	Abreviews	特記事項
WB		Use at an assay dependent dilution. Detects a band of approximately 53 kDa (predicted molecular weight: 48 kDa). A recommended starting concentration for Western blots is 1/1000 when using colorimetric substrates such as BCIP/NBT and 1/5000 for chemiluminescent substrates.

## ターゲット情報

機能	Binds to the C-terminal propeptide of type I procollagen and enhances procollagen C-proteinase activity. C-terminal processed part of PCPE (CT-PCPE) may have an metalloproteinase inhibitory activity.
配列類似性	Contains 2 CUB domains. Contains 1 NTR domain.
翻訳後修飾	C-terminally processed at multiple positions.
細胞内局在	Secreted.

## 画像



Anti-PCOLCE antibody - Carboxyterminal end (ab39204) at 1/1000 dilution + cell lysate from human neonatal dermal fibroblasts

Performed under reducing conditions.

**Predicted band size:** 48 kDa

**Observed band size:** 53 kDa

**Please note:** All products are "FOR RESEARCH USE ONLY. NOT FOR USE IN DIAGNOSTIC PROCEDURES"

## Our Abpromise to you: Quality guaranteed and expert technical support

- Replacement or refund for products not performing as stated on the datasheet
- Valid for 12 months from date of delivery
- Response to your inquiry within 24 hours
- We provide support in Chinese, English, French, German, Japanese and Spanish
- Extensive multi-media technical resources to help you

- We investigate all quality concerns to ensure our products perform to the highest standards

If the product does not perform as described on this datasheet, we will offer a refund or replacement. For full details of the Abpromise, please visit <https://www.abcam.co.jp/abpromise> or contact our technical team.

#### **Terms and conditions**

---

- Guarantee only valid for products bought direct from Abcam or one of our authorized distributors