

Anti-PCM1 antibody ab72443

★★★★★ [2 Abreviews](#) [6 References](#) [画像数 2](#)

製品の概要

製品名	Anti-PCM1 antibody
製品の詳細	Rabbit polyclonal to PCM1
由来種	Rabbit
アプリケーション	適用あり: WB, IP
種交差性	交差種: Mouse, Human 交差が予測される動物種: Rat, Rabbit, Horse, Guinea pig, Cow, Dog, Pig, Chimpanzee, Ferret, Rhesus monkey, Orangutan 
免疫原	A synthetic peptide corresponding to a region between residues 1925 and 1975 of human PCM1.
ポジティブ・コントロール	HeLa whole cell lysate; 293T and mouse NIH3T3 cell lysates
特記事項	<p>The Life Science industry has been in the grips of a reproducibility crisis for a number of years. Abcam is leading the way in addressing this with our range of recombinant monoclonal antibodies and knockout edited cell lines for gold-standard validation. Please check that this product meets your needs before purchasing.</p> <p>If you have any questions, special requirements or concerns, please send us an inquiry and/or contact our Support team ahead of purchase. Recommended alternatives for this product can be found below, along with publications, customer reviews and Q&As</p>

製品の特性

製品の状態	Liquid
保存方法	Shipped at 4°C. Upon delivery aliquot and store at -20°C. Avoid freeze / thaw cycles.
バッファー	pH: 6.8 Preservative: 0.09% Sodium azide Constituents: 0.1% BSA, Tris buffered saline
精製度	Immunogen affinity purified
ポリ/モノ	ポリクローナル
アイソタイプ	IgG

アプリケーション

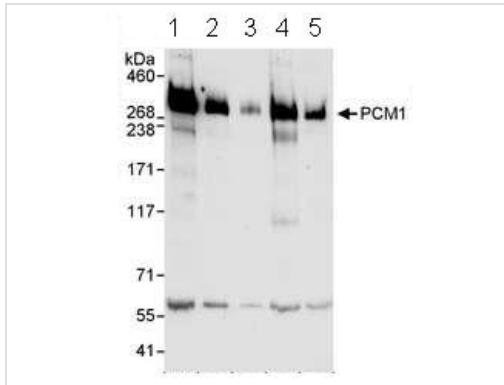
The Abpromise guarantee **Abpromise保証は、次のテスト済みアプリケーションにおけるab72443の使用に適用されます**
アプリケーションノートには、推奨の開始希釈率がありますが、適切な希釈率につきましてはご検討ください。

アプリケーション	Abreviews	特記事項
WB		1/2000 - 1/10000. Detects a band of approximately 270 kDa.
IP		Use a concentration of 2 - 5 µg/ml.

ターゲット情報

機能	Required for centrosome assembly and function. Essential for the correct localization of several centrosomal proteins including CEP250, CETN3, PCNT and NEK2. Required to anchor microtubules to the centrosome. Involved in the biogenesis of cilia.
組織特異性	Expressed in blood, bone marrow, breast, lymph node, ovary and thyroid.
関連疾患	Defects in PCM1 are a cause of thyroid papillary carcinoma (TPC) [MIM:188550]. TPC is a common tumor of the thyroid that typically arises as an irregular, solid or cystic mass from otherwise normal thyroid tissue. Papillary carcinomas are malignant neoplasm characterized by the formation of numerous, irregular, finger-like projections of fibrous stroma that is covered with a surface layer of neoplastic epithelial cells. Note=A chromosomal aberration involving PCM1 is found in thyroid papillary carcinomas. Translocation t(8;10)(p21.3;q11.2) with RET links the protein kinase domain of RET to the major portion of PCM1. Note=A chromosomal aberration involving PCM1 is found in a variety of hematological malignancies including atypical chronic myeloid leukemia (atypical CML) and T-cell lymphoma. Translocation t(8;9)(p22;p24) with JAK2 links the protein kinase domain of JAK2 to the major portion of PCM1.
配列類似性	Belongs to the PCM1 family.
翻訳後修飾	Phosphorylated upon DNA damage, probably by ATM or ATR.
細胞内局在	Cytoplasm > cytoskeleton. Cytoplasm > cytoskeleton > centrosome. Cytoplasmic granule. Localizes to cytoplasmic granules which are enriched around the centrosome. This centrosomal enrichment requires microtubules and dynein. The majority of the protein dissociates from the centrosome during metaphase and subsequently localizes to the cleavage site in telophase.

画像



Western blot - Anti-PCM1 antibody (ab72443)

All lanes : Anti-PCM1 antibody (ab72443) at 0.04 µg/ml

Lane 1 : HeLa whole cell lysate at 50 µg

Lane 2 : HeLa whole cell lysate at 15 µg

Lane 3 : HeLa whole cell lysate at 5 µg

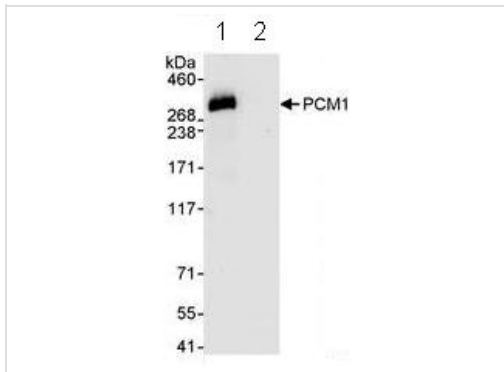
Lane 4 : 293T cell lysate at 50 µg

Lane 5 : Mouse NIH3T3 cell lysate at 50 µg

Observed band size: 270 kDa

Additional bands at: 60 kDa. We are unsure as to the identity of these extra bands.

Detection: Chemiluminescence with exposure times of 30 seconds



Immunoprecipitation - Anti-PCM1 antibody (ab72443)

Immunoprecipitation of PCM1 from 1mg HeLa whole cell lysate by 3 µg ab72443 followed by WB (20% of IP loaded):

Lane 1: PCM1 precipitate

Lane 2: Control IgG

For blotting immunoprecipitated PCM1, ab72443 was used at 1 µg/ml.

Detection: Chemiluminescence with an exposure time of 10 seconds.

Please note: All products are "FOR RESEARCH USE ONLY. NOT FOR USE IN DIAGNOSTIC PROCEDURES"

Our Abpromise to you: Quality guaranteed and expert technical support

- Replacement or refund for products not performing as stated on the datasheet
- Valid for 12 months from date of delivery
- Response to your inquiry within 24 hours
- We provide support in Chinese, English, French, German, Japanese and Spanish
- Extensive multi-media technical resources to help you
- We investigate all quality concerns to ensure our products perform to the highest standards

If the product does not perform as described on this datasheet, we will offer a refund or replacement. For full details of the Abpromise, please visit <https://www.abcam.co.jp/abpromise> or contact our technical team.

Terms and conditions

- Guarantee only valid for products bought direct from Abcam or one of our authorized distributors