

Anti-PCK1/PEPC antibody ab87340

2 References **画像数 1**

製品の概要

製品名	Anti-PCK1/PEPC antibody
製品の詳細	Rabbit polyclonal to PCK1/PEPC
由来種	Rabbit
アプリケーション	適用あり: WB
種交差性	交差種: Mouse, Rat, Human 交差が予測される動物種: Sheep, Horse, Chicken, Cow, Pig, Zebrafish, Orangutan 
免疫原	Synthetic peptide corresponding to Human PCK1/PEPC aa 200-300 conjugated to keyhole limpet haemocyanin. (Peptide available as ab217264)
ポジティブ・コントロール	Recombinant Human PCK1/PEPC protein (ab114362) can be used as a positive control in WB. This antibody gave a positive signal in the following tissue lysates: Human Liver Rat Liver Mouse Liver
特記事項	<p>The Life Science industry has been in the grips of a reproducibility crisis for a number of years. Abcam is leading the way in addressing this with our range of recombinant monoclonal antibodies and knockout edited cell lines for gold-standard validation. Please check that this product meets your needs before purchasing.</p> <p>If you have any questions, special requirements or concerns, please send us an inquiry and/or contact our Support team ahead of purchase. Recommended alternatives for this product can be found below, along with publications, customer reviews and Q&As</p>

製品の特性

製品の状態	Liquid
保存方法	Shipped at 4°C. Store at +4°C short term (1-2 weeks). Upon delivery aliquot. Store at -20°C or -80°C. Avoid freeze / thaw cycle.
バッファー	pH: 7.40 Preservative: 0.02% Sodium azide Constituent: PBS
	Batches of this product that have a concentration < 1mg/ml may have BSA added as a stabilising agent. If you would like information about the formulation of a specific lot, please contact our scientific support team who will be happy to help.

精製度	Immunogen affinity purified
ポリ/モノ	ポリクローナル
アイソタイプ	IgG

アプリケーション

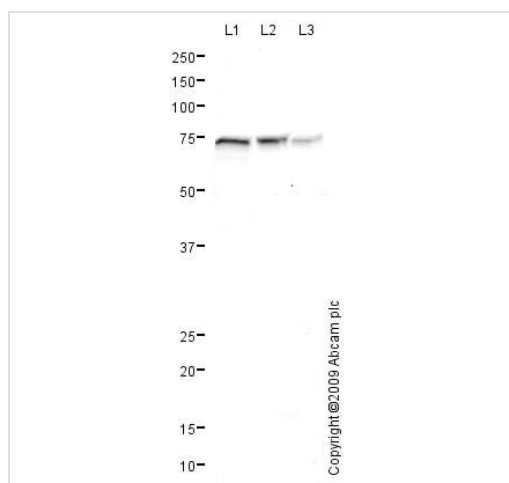
The Abpromise guarantee **Abpromise保証は、**次のテスト済みアプリケーションにおけるab87340の使用に適用されます
アプリケーションノートには、推奨の開始希釈率がありますが、適切な希釈率につきましてはご検討ください。

アプリケーション	Abreviews	特記事項
WB		Use a concentration of 2 µg/ml. Detects a band of approximately 70 kDa (predicted molecular weight: 70 kDa).

ターゲット情報

機能	Catalyzes the conversion of oxaloacetate (OAA) to phosphoenolpyruvate (PEP), the rate-limiting step in the metabolic pathway that produces glucose from lactate and other precursors derived from the citric acid cycle.
組織特異性	Major sites of expression are liver, kidney and adipocytes.
パスウェイ	Carbohydrate biosynthesis; gluconeogenesis.
関連疾患	Defects in PCK1 are the cause of cytosolic phosphoenolpyruvate carboxykinase deficiency (cytosolic PEPCK deficiency) [MIM:261680]. PEPCK deficiency is a metabolic disorder resulting from impaired gluconeogenesis. It is a rare disease with less than 10 cases reported in the literature. Clinical characteristics include hypotonia, hepatomegaly, failure to thrive, lactic acidosis and hypoglycemia. Autopsy reveals fatty infiltration of both the liver and kidneys. The disorder is transmitted as an autosomal recessive trait.
配列類似性	Belongs to the phosphoenolpyruvate carboxykinase [GTP] family.
翻訳後修飾	Acetylation is increased on addition of glucose and appears to regulate the protein stability.
細胞内局在	Cytoplasm.

画像



Western blot - Anti-PCK1/PEPC antibody (ab87340)

All lanes : Anti-PCK1/PEPC antibody (ab87340) at 2 µg/ml

Lane 1 : Human liver tissue lysate - total protein ([ab29889](#))

Lane 2 : Liver (Rat) Tissue Lysate

Lane 3 : Liver (Mouse) Tissue Lysate

Lysates/proteins at 20 µg per lane.

Secondary

All lanes : Goat polyclonal to Rabbit IgG - H&L - Pre-Adsorbed (HRP) ([ab65484](#)) at 1/3000 dilution

Developed using the ECL technique.

Performed under reducing conditions.

Predicted band size: 70 kDa

Observed band size: 70 kDa

Exposure time: 15 minutes

Please note: All products are "FOR RESEARCH USE ONLY. NOT FOR USE IN DIAGNOSTIC PROCEDURES"

Our Abpromise to you: Quality guaranteed and expert technical support

- Replacement or refund for products not performing as stated on the datasheet
- Valid for 12 months from date of delivery
- Response to your inquiry within 24 hours
- We provide support in Chinese, English, French, German, Japanese and Spanish
- Extensive multi-media technical resources to help you
- We investigate all quality concerns to ensure our products perform to the highest standards

If the product does not perform as described on this datasheet, we will offer a refund or replacement. For full details of the Abpromise, please visit <https://www.abcam.co.jp/abpromise> or contact our technical team.

Terms and conditions

- Guarantee only valid for products bought direct from Abcam or one of our authorized distributors