

Anti-Paxillin (phospho Y118) antibody ab75740

4 References [画像数 2](#)

製品の概要

製品名	Anti-Paxillin (phospho Y118) antibody
製品の詳細	Rabbit polyclonal to Paxillin (phospho Y118)
由来種	Rabbit
アプリケーション	適用あり: WB, IHC-P
種交差性	交差種: Human
免疫原	Synthetic peptide corresponding to Human Paxillin (phospho Y118). Run BLAST with ExPASy Run BLAST with NCBI
ポジティブ・コントロール	Human breast carcinoma tissue. Extracts from HeLa cells treated with EGF.
特記事項	<p>The Life Science industry has been in the grips of a reproducibility crisis for a number of years. Abcam is leading the way in addressing this with our range of recombinant monoclonal antibodies and knockout edited cell lines for gold-standard validation. Please check that this product meets your needs before purchasing.</p> <p>If you have any questions, special requirements or concerns, please send us an inquiry and/or contact our Support team ahead of purchase. Recommended alternatives for this product can be found below, along with publications, customer reviews and Q&As</p>

製品の特性

製品の状態	Liquid
保存方法	Shipped at 4°C. Store at -20°C. Stable for 12 months at -20°C.
バッファー	pH: 7.40 Preservative: 0.02% Sodium azide Constituents: 50% Glycerol (glycerin, glycerine), 0.87% Sodium chloride, PBS Without Mg ²⁺ and Ca ²⁺
精製度	Immunogen affinity purified
特記事項 (精製)	ab75740 was affinity-purified from rabbit antiserum by affinity-chromatography using epitope-specific phosphopeptide. The antibody against non-phosphopeptide was removed by chromatography using non-phosphopeptide corresponding to the phosphorylation site.
ポリクローナル	ポリクローナル
アイソタイプ	IgG

アプリケーション

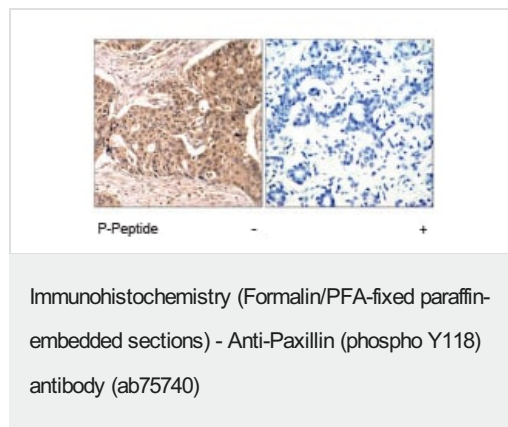
The Abpromise guarantee Abpromise保証は、次のテスト済みアプリケーションにおけるab75740の使用に適用されず
アプリケーションノートには、推奨の開始希釈率がありますが、適切な希釈率につきましてはご検討ください。

アプリケーション	Abreviews	特記事項
WB		1/500 - 1/1000. Detects a band of approximately 64 kDa (predicted molecular weight: 64 kDa).
IHC-P		1/50 - 1/100.

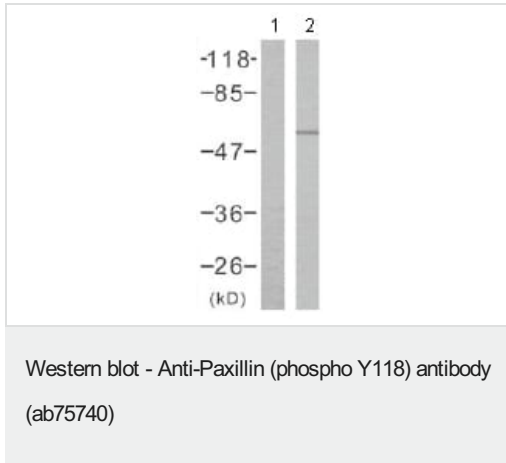
ターゲット情報

機能	Cytoskeletal protein involved in actin-membrane attachment at sites of cell adhesion to the extracellular matrix (focal adhesion).
配列類似性	Belongs to the paxillin family. Contains 4 LIM zinc-binding domains.
翻訳後修飾	Phosphorylated on tyrosine residues during integrin-mediated cell adhesion, embryonic development, fibroblast transformation and following stimulation of cells by mitogens.
細胞内局在	Cytoplasm > cytoskeleton. Cell junction > focal adhesion.

画像



ab75740 at 1/50 dilution staining Paxillin in human breast carcinoma by Immunohistochemistry using paraffin-embedded tissue, in the absence or presence of the immunising phosphopeptide.



All lanes : Anti-Paxillin (phospho Y118) antibody (ab75740) at 1/500 dilution

Lane 1 : HeLa cell extract, untreated

Lane 2 : HeLa cell extract treated with EGF

Predicted band size: 64 kDa

Observed band size: 64 kDa

Please note: All products are "FOR RESEARCH USE ONLY. NOT FOR USE IN DIAGNOSTIC PROCEDURES"

Our Abpromise to you: Quality guaranteed and expert technical support

- Replacement or refund for products not performing as stated on the datasheet
- Valid for 12 months from date of delivery
- Response to your inquiry within 24 hours
- We provide support in Chinese, English, French, German, Japanese and Spanish
- Extensive multi-media technical resources to help you
- We investigate all quality concerns to ensure our products perform to the highest standards

If the product does not perform as described on this datasheet, we will offer a refund or replacement. For full details of the Abpromise, please visit <https://www.abcam.co.jp/abpromise> or contact our technical team.

Terms and conditions

- Guarantee only valid for products bought direct from Abcam or one of our authorized distributors