

Anti-Paxillin (phospho S83) antibody ab31833

画像数 1

製品の概要

| | |
|----------|---|
| 製品名 | Anti-Paxillin (phospho S83) antibody |
| 製品の詳細 | Rabbit polyclonal to Paxillin (phospho S83) |
| 由来種 | Rabbit |
| 特異性 | ab31833 detects a 68kDa protein corresponding to the molecular mass of phosphorylated paxillin. |
| アプリケーション | 適用あり: WB |
| 種交差性 | 交差種: Mouse |
| 免疫原 | Synthetic peptide corresponding to Mouse Paxillin (phospho S83) conjugated to keyhole limpet haemocyanin. |
| 特記事項 | <p>The Life Science industry has been in the grips of a reproducibility crisis for a number of years. Abcam is leading the way in addressing this with our range of recombinant monoclonal antibodies and knockout edited cell lines for gold-standard validation. Please check that this product meets your needs before purchasing.</p> <p>If you have any questions, special requirements or concerns, please send us an inquiry and/or contact our Support team ahead of purchase. Recommended alternatives for this product can be found below, along with publications, customer reviews and Q&As</p> |

製品の特性

| | |
|--------|---|
| 製品の状態 | Liquid |
| 保存方法 | Shipped at 4°C. Upon delivery aliquot and store at -20°C. Avoid freeze / thaw cycles. |
| バッファー | Preservative: 0.05% Sodium azide Constituents: PBS, 50% Glycerol, 0.1% BSA |
| 精製度 | Immunogen affinity purified |
| ポリ/モノ | ポリクローナル |
| アイソタイプ | IgG |

アプリケーション

The Abpromise guarantee

Abpromise保証は、次のテスト済みアプリケーションにおけるab31833の使用に適用されます

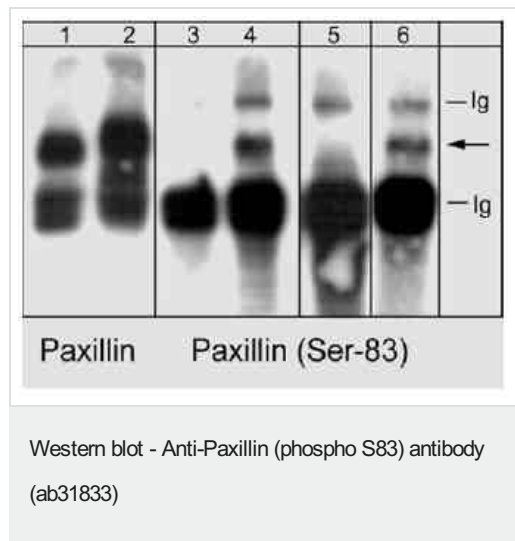
アプリケーションノートには、推奨の開始希釈率がありますが、適切な希釈率につきましてはご確認ください。

| アプリケーション | Abreviews | 特記事項 |
|----------|-----------|--|
| WB | | 1/1000. Predicted molecular weight: 68 kDa. In 5% non-fat milk, PBS, 0.04% Tween20 for 1hour at room temperature. |

ターゲット情報

| | |
|-------|--|
| 機能 | Cytoskeletal protein involved in actin-membrane attachment at sites of cell adhesion to the extracellular matrix (focal adhesion). |
| 配列類似性 | Belongs to the paxillin family. Contains 4 LIM zinc-binding domains. |
| 翻訳後修飾 | Phosphorylated on tyrosine residues during integrin-mediated cell adhesion, embryonic development, fibroblast transformation and following stimulation of cells by mitogens. |
| 細胞内局在 | Cytoplasm > cytoskeleton. Cell junction > focal adhesion. |

画像



Western blot analysis of immunoprecipitated paxillin (arrow) in mouse macrophages untreated (lanes 1 & 3) or treated with calyculin A (100 nM) for 30 min (lanes 2, 4, 5, & 6). Lysates were immunoprecipitated with anti-Paxillin. The blots were probed with anti-Paxillin or anti-phospho-Paxillin (Ser-83). The latter was used in the presence of phospho-Paxillin (Ser-83) peptide (lane 5) or phospho-Paxillin (Ser-85) peptide (lane 6). Immunoglobulin (Ig) chains from the immunoprecipitation were observed above and below the paxillin bands.

Please note: All products are "FOR RESEARCH USE ONLY. NOT FOR USE IN DIAGNOSTIC PROCEDURES"

Our Abpromise to you: Quality guaranteed and expert technical support

- Replacement or refund for products not performing as stated on the datasheet
- Valid for 12 months from date of delivery
- Response to your inquiry within 24 hours
- We provide support in Chinese, English, French, German, Japanese and Spanish
- Extensive multi-media technical resources to help you
- We investigate all quality concerns to ensure our products perform to the highest standards

If the product does not perform as described on this datasheet, we will offer a refund or replacement. For full details of the Abpromise, please visit <https://www.abcam.co.jp/abpromise> or contact our technical team.

Terms and conditions

- Guarantee only valid for products bought direct from Abcam or one of our authorized distributors