


Anti-PAX5 antibody [mAbcam52588] ab52588

画像数 2

製品の概要

製品名	Anti-PAX5 antibody [mAbcam52588]
製品の詳細	Mouse monoclonal [mAbcam52588] to PAX5
由来種	Mouse
アプリケーション	適用あり: Flow Cyt (Intra), WB
種交差性	交差種: Human 交差が予測される動物種: Mouse 
免疫原	Synthetic peptide conjugated to KLH derived from within residues 1 - 100 of Human PAX5.Immunogen の所有権に関して(Peptide available as ab55851 .)
ポジティブ・コントロール	This antibody gave a positive signal in Raji and HEK293 Whole Cell Lysates
特記事項	<p>This antibody clone is manufactured by Abcam. If you require a custom buffer formulation or conjugation for your experiments, please contact orders@abcam.com.</p> <p>The Life Science industry has been in the grips of a reproducibility crisis for a number of years. Abcam is leading the way in addressing this with our range of recombinant monoclonal antibodies and knockout edited cell lines for gold-standard validation. Please check that this product meets your needs before purchasing.</p> <p>If you have any questions, special requirements or concerns, please send us an inquiry and/or contact our Support team ahead of purchase. Recommended alternatives for this product can be found below, along with publications, customer reviews and Q&As</p>

製品の特性

製品の状態	Liquid
保存方法	Shipped at 4°C. Store at +4°C short term (1-2 weeks). Upon delivery aliquot. Store at -20°C or -80°C. Avoid freeze / thaw cycle.
バッファー	pH: 7.40 Preservative: 0.02% Sodium azide Constituent: PBS
精製度	Protein G purified
ポリ/モノ	モノクローナル
クローン名	mAbcam52588

ミエローマ Sp2/0-Ag14
アイソタイプ IgG2b

アプリケーション

The Abpromise guarantee **Abpromise保証は、次のテスト済みアプリケーションにおけるab52588の使用に適用されます**
アプリケーションノートには、推奨の開始希釈率がありますが、適切な希釈率につきましてはご検討ください。

アプリケーション	Abreviews	特記事項
Flow Cyt (Intra)		Use 1 µg for 10 ⁶ cells. ab170192 - Mouse monoclonal IgG2b, is suitable for use as an isotype control with this antibody.
WB		Use a concentration of 3 µg/ml. Detects a band of approximately 45 kDa (predicted molecular weight: 42 kDa).

ターゲット情報

機能 May play an important role in B-cell differentiation as well as neural development and spermatogenesis. Involved in the regulation of the CD19 gene, a B-lymphoid-specific target gene.

関連疾患 A chromosomal aberration involving PAX5 is a cause of acute lymphoblastic leukemia. Translocation t(9;18)(p13;q11.2) with ZNF521. Translocation t(9;3)(p13;p14.1) with FOXP1. Translocation t(9;12)(p13;p13) with ETV6. Leukemia, acute lymphoblastic, 3

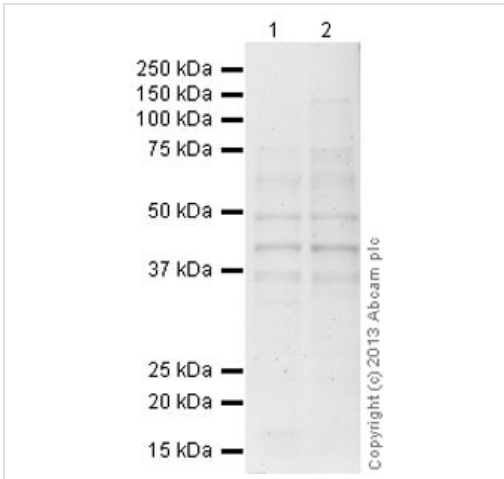
配列類似性 Contains 1 paired domain.

発生段階 Expressed at early B-cell differentiation, in the developing CNS and in adult testis.

翻訳後修飾 O-glycosylated.

細胞内局在 Nucleus.

画像



Western blot - Anti-PAX5 antibody [mAbcam52588] (ab52588)

All lanes : Anti-PAX5 antibody [mAbcam52588] (ab52588) at 1 µg/ml

Lane 1 : Raji (Human Burkitt's lymphoma cell line) Whole Cell Lysate (blocked with 1% milk)

Lane 2 : HEK293 (Human embryonic kidney cell line) Whole Cell Lysate (blocked with 1% Milk)

Lysates/proteins at 20 µg per lane.

Secondary

All lanes : Goat Anti-Mouse IgG H&L (HRP) preadsorbed (**ab97040**) at 1/10000 dilution

Developed using the ECL technique.

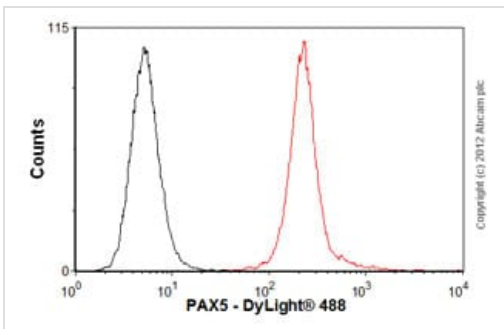
Performed under reducing conditions.

Predicted band size: 42 kDa

Observed band size: 45 kDa

Additional bands at: 50 kDa. We are unsure as to the identity of these extra bands.

Exposure time: 20 minutes



Flow Cytometry (Intracellular) - Anti-PAX5 antibody [mAbcam52588] (ab52588)

Overlay histogram showing Ramos cells stained with ab52588 (red line). The cells were fixed with 80% methanol (5 min) and then permeabilized with 0.1% PBS-Tween for 20 min. The cells were then incubated in 1x PBS / 10% normal goat serum / 0.3M glycine to block non-specific protein-protein interactions followed by the antibody (ab52588, 1µg/1x10⁶ cells) for 30 min at 22°C. The secondary antibody used was DyLight® 488 goat anti-mouse IgG (H+L) (**ab96879**) at 1/500 dilution for 30 min at 22°C. Isotype control antibody (black line) was mouse IgG2b [PLPV219] (**ab91366**, 2µg/1x10⁶ cells) used under the same conditions.

Acquisition of >5,000 events was performed. This antibody gave a positive signal in Ramos cells fixed with 4% paraformaldehyde (10 min)/permeabilized with 0.1% PBS-Tween for 20 min used under the same conditions.

Please note: All products are "FOR RESEARCH USE ONLY. NOT FOR USE IN DIAGNOSTIC PROCEDURES"

Our Abpromise to you: Quality guaranteed and expert technical support

- Replacement or refund for products not performing as stated on the datasheet
- Valid for 12 months from date of delivery
- Response to your inquiry within 24 hours

- We provide support in Chinese, English, French, German, Japanese and Spanish
- Extensive multi-media technical resources to help you
- We investigate all quality concerns to ensure our products perform to the highest standards

If the product does not perform as described on this datasheet, we will offer a refund or replacement. For full details of the Abpromise, please visit <https://www.abcam.co.jp/abpromise> or contact our technical team.

Terms and conditions

- Guarantee only valid for products bought direct from Abcam or one of our authorized distributors