




Anti-PAX4 antibody ab101721

★★★★★ [1 Abreviews](#) [2 References](#) [画像数 1](#)

製品の概要

製品名	Anti-PAX4 antibody
製品の詳細	Goat polyclonal to PAX4
由来種	Goat
アプリケーション	適用あり: WB
種交差性	交差種: Mouse 交差が予測される動物種: Rat, Rabbit, Dog 
免疫原	Synthetic peptide corresponding to Human PAX4 aa 150-250 (internal sequence). NP_006184.2 Database link: O43316-4 <div>  Run BLAST with  Run BLAST with </div>
ポジティブ・コントロール	Mouse pancreas lysate.
特記事項	<p>The Life Science industry has been in the grips of a reproducibility crisis for a number of years. Abcam is leading the way in addressing this with our range of recombinant monoclonal antibodies and knockout edited cell lines for gold-standard validation. Please check that this product meets your needs before purchasing.</p> <p>If you have any questions, special requirements or concerns, please send us an inquiry and/or contact our Support team ahead of purchase. Recommended alternatives for this product can be found below, along with publications, customer reviews and Q&As</p>

製品の特性

製品の状態	Liquid
保存方法	Shipped at 4°C. Upon delivery aliquot and store at -20°C. Avoid freeze / thaw cycles.
バッファー	pH: 7.30 Preservative: 0.02% Sodium azide Constituents: 0.5% BSA, Tris buffered saline
精製度	Immunogen affinity purified
特記事項 (精製)	ab101721 was purified from goat serum by ammonium sulphate precipitation followed by antigen affinity chromatography using the immunizing peptide.
ポリ/モノ	ポリクローナル
アイソタイプ	IgG

アプリケーション

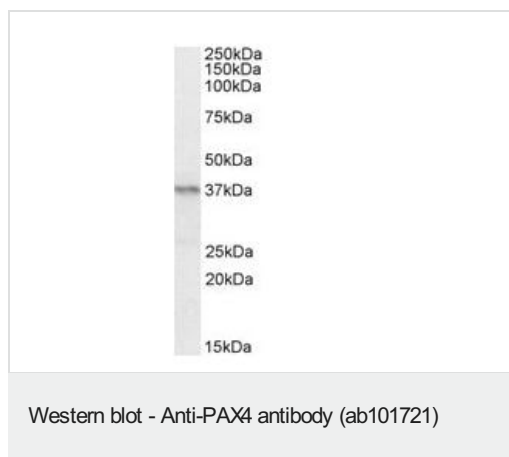
The Abpromise guarantee **Abpromise保証は、** 次のテスト済みアプリケーションにおけるab101721の使用に適用されます
アプリケーションノートには、推奨の開始希釈率がありますが、適切な希釈率につきましてはご検討ください。

アプリケーション	Abreviews	特記事項
WB		Use a concentration of 0.2 - 0.6 µg/ml. Detects a band of approximately 37 kDa (predicted molecular weight: 37 kDa). 1 hour primary incubation is recommended for this product.

ターゲット情報

機能	Plays an important role in the differentiation and development of pancreatic islet beta cells. Transcriptional repressor that binds to a common element in the glucagon, insulin and somatostatin promoters. Competes with PAX6 for this same promoter binding site. Isoform 2 appears to be a dominant negative form antagonizing PAX4 transcriptional activity.
関連疾患	Defects in PAX4 are a cause of noninsulin-dependent diabetes mellitus (NIDDM) [MIM:125853]; also known as diabetes mellitus type 2 or maturity-onset diabetes. NIDDM is characterized by an autosomal dominant mode of inheritance, onset during adulthood and insulin resistance. Genetic variations in PAX4 are associated with susceptibility to insulin-dependent diabetes mellitus (IDDM) [MIM:222100]. IDDM normally starts in childhood or adolescence and is caused by the body's own immune system which destroys the insulin-producing beta cells in the pancreas. Classical features are polydipsia, polyphagia and polyuria, due to hyperglycemia-induced osmotic diuresis. Defects in PAX4 are a cause of susceptibility to diabetes mellitus ketosis-prone (KPD) [MIM:612227]. KPD is an atypical form of diabetes mellitus characterized by an acute initial presentation with severe hyperglycemia and ketosis, as seen in classic type 1 diabetes, but after initiation of insulin therapy, prolonged remission is often possible with cessation of insulin therapy and maintenance of appropriate metabolic control. Metabolic studies show a markedly blunted insulin secretory response to glucose, partially reversible with the improvement of blood glucose control. Variable levels of insulin resistance are observed, especially in obese patients. Pancreatic beta-cell autoimmunity is a rare finding. Defects in PAX4 are the cause of maturity-onset diabetes of the young type 9 (MODY9) [MIM:612225]. MODY is a form of diabetes that is characterized by an autosomal dominant mode of inheritance, onset in childhood or early adulthood (usually before 25 years of age), a primary defect in insulin secretion and frequent insulin-independence at the beginning of the disease.
配列類似性	Belongs to the paired homeobox family. Contains 1 homeobox DNA-binding domain. Contains 1 paired domain.
細胞内局在	Nucleus.

画像



Anti-PAX4 antibody (ab101721) at 0.2 µg/ml + Mouse pancreas lysate (in RIPA buffer) at 35 µg

Developed using the ECL technique.

Predicted band size: 37 kDa

Observed band size: ~37 kDa

Exposure time: 1 hour

Please note: All products are "FOR RESEARCH USE ONLY. NOT FOR USE IN DIAGNOSTIC PROCEDURES"

Our Abpromise to you: Quality guaranteed and expert technical support

- Replacement or refund for products not performing as stated on the datasheet
- Valid for 12 months from date of delivery
- Response to your inquiry within 24 hours
- We provide support in Chinese, English, French, German, Japanese and Spanish
- Extensive multi-media technical resources to help you
- We investigate all quality concerns to ensure our products perform to the highest standards

If the product does not perform as described on this datasheet, we will offer a refund or replacement. For full details of the Abpromise, please visit <https://www.abcam.co.jp/abpromise> or contact our technical team.

Terms and conditions

- Guarantee only valid for products bought direct from Abcam or one of our authorized distributors