


Anti-Pat1b antibody ab124257

2 References [画像数 2](#)

製品の概要

製品名	Anti-Pat1b antibody
製品の詳細	Rabbit polyclonal to Pat1b
由来種	Rabbit
アプリケーション	適用あり: WB, IP
種交差性	交差種: Human 交差が予測される動物種: Mouse, Rabbit, Chimpanzee, Rhesus monkey, Gorilla, Chinese hamster, Orangutan 
免疫原	Synthetic peptide corresponding to Human Pat1b aa 425-475. Database link: NP_689929.2
ポジティブ・コントロール	HeLa, 293T and Jurkat whole cell lysate (ab7899)
特記事項	<p>The Life Science industry has been in the grips of a reproducibility crisis for a number of years. Abcam is leading the way in addressing this with our range of recombinant monoclonal antibodies and knockout edited cell lines for gold-standard validation. Please check that this product meets your needs before purchasing.</p> <p>If you have any questions, special requirements or concerns, please send us an inquiry and/or contact our Support team ahead of purchase. Recommended alternatives for this product can be found below, along with publications, customer reviews and Q&As</p>

製品の特性

製品の状態	Liquid
保存方法	Shipped at 4°C. Upon delivery aliquot and store at -20°C. Avoid freeze / thaw cycles.
バッファー	pH: 7 Preservative: 0.09% Sodium azide Constituent: 99% Tris citrate/phosphate
精製度	pH 7 to 8 Immunogen affinity purified
ポリ/モノ	ポリクローナル
アイソタイプ	IgG

アプリケーション

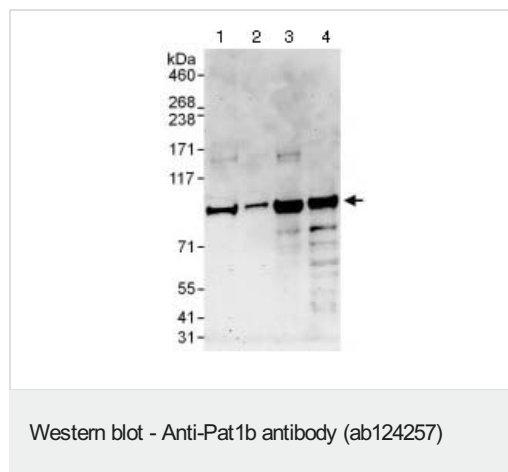
The Abpromise guarantee Abpromise保証は、次のテスト済みアプリケーションにおけるab124257の使用に適用されます
アプリケーションノートには、推奨の開始希釈率がありますが、適切な希釈率につきましてはご検討ください。

アプリケーション	Abreviews	特記事項
WB		1/2000 - 1/10000. Predicted molecular weight: 1 kDa.
IP		Use at 2-10 µg/mg of lysate.

ターゲット情報

機能	RNA-binding protein involved in deadenylation-dependent decapping of mRNAs, leading to the degradation of mRNAs. Acts as a scaffold protein that connects deadenylation and decapping machinery. Required for cytoplasmic mRNA processing body (P-body) assembly. In case of infection, required for translation and replication of hepatitis C virus (HCV).
組織特異性	Ubiquitous.
配列類似性	Belongs to the PAT1 family.
ドメイン	The region A, also named N-term, mediates the interaction with DDX6/RCK and is required for cytoplasmic mRNA processing body assembly. The region C, also named Pat-C, is required for RNA-binding and mediates the binding with the Lsm-containing SMN-Sm protein complex and the decapping machinery. It folds into an alpha-alpha superhelix, exposing conserved and basic residues on one side of the domain.
細胞内局在	Cytoplasm > P-body.

画像



All lanes : Anti-Pat1b antibody (ab124257) at 0.1 µg/ml

Lane 1 : HeLa whole cell lysate at 50 µg

Lane 2 : HeLa whole cell lysate at 15 µg

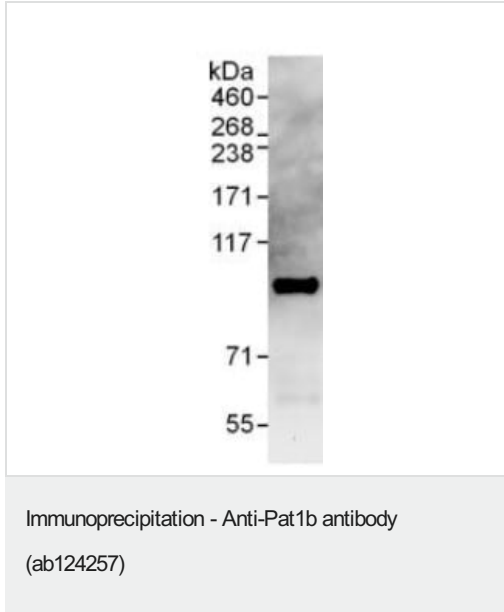
Lane 3 : 293T whole cell lysate at 50 µg

Lane 4 : Jurkat whole cell lysate at 50 µg

Developed using the ECL technique.

Predicted band size: 1 kDa

Exposure time: 3 minutes



ab124257 at 1 $\mu\text{g/ml}$ staining Pat1b in HeLa whole cell lysate immunoprecipitated using ab124257 at 6 $\mu\text{g/mg}$ lysate (1 mg/IP; 20% of IP loaded/lane). Detection: Chemiluminescence with exposure time of 30 seconds.

Please note: All products are "FOR RESEARCH USE ONLY. NOT FOR USE IN DIAGNOSTIC PROCEDURES"

Our Abpromise to you: Quality guaranteed and expert technical support

- Replacement or refund for products not performing as stated on the datasheet
- Valid for 12 months from date of delivery
- Response to your inquiry within 24 hours
- We provide support in Chinese, English, French, German, Japanese and Spanish
- Extensive multi-media technical resources to help you
- We investigate all quality concerns to ensure our products perform to the highest standards

If the product does not perform as described on this datasheet, we will offer a refund or replacement. For full details of the Abpromise, please visit <https://www.abcam.co.jp/abpromise> or contact our technical team.

Terms and conditions

- Guarantee only valid for products bought direct from Abcam or one of our authorized distributors