

Anti-Parvalbumin antibody ab32895

★★★★★ [6 Abreviews](#) [9 References](#) [画像数 2](#)

製品の概要

製品名	Anti-Parvalbumin antibody
製品の詳細	Goat polyclonal to Parvalbumin
由来種	Goat
アプリケーション	適用あり: WB, Flow Cyt
種交差性	交差種: Rat, Human 交差が予測される動物種: Mouse, Xenopus laevis, Macaque monkey 
免疫原	Synthetic peptide corresponding to Human Parvalbumin aa 99-110 (C terminal). Sequence: GVDEFSTLVAES Database link: P20472 Run BLAST with Run BLAST with
ポジティブ・コントロール	WB: Human cerebellum and rat brain tissue lysate. Flow Cyt: Kelly cells
特記事項	<p>The Life Science industry has been in the grips of a reproducibility crisis for a number of years. Abcam is leading the way in addressing this with our range of recombinant monoclonal antibodies and knockout edited cell lines for gold-standard validation. Please check that this product meets your needs before purchasing.</p> <p>If you have any questions, special requirements or concerns, please send us an inquiry and/or contact our Support team ahead of purchase. Recommended alternatives for this product can be found below, along with publications, customer reviews and Q&As</p>

製品の特性

製品の状態	Liquid
保存方法	Shipped at 4°C. Upon delivery aliquot and store at -20°C. Avoid freeze / thaw cycles.
バッファー	pH: 7.30 Preservative: 0.02% Sodium azide Constituents: Tris buffered saline, 0.5% BSA
精製度	Immunogen affinity purified
特記事項 (精製)	Purified from goat serum by ammonium sulphate precipitation followed by antigen affinity chromatography using the immunizing peptide.

ポリモノ
アイソタイプ

ポリクローナル
IgG

アプリケーション

The Abpromise guarantee Abpromise保証は、次のテスト済みアプリケーションにおけるab32895の使用に適用されます
アプリケーションノートには、推奨の開始希釈率がありますが、適切な希釈率につきましてはご確認ください。

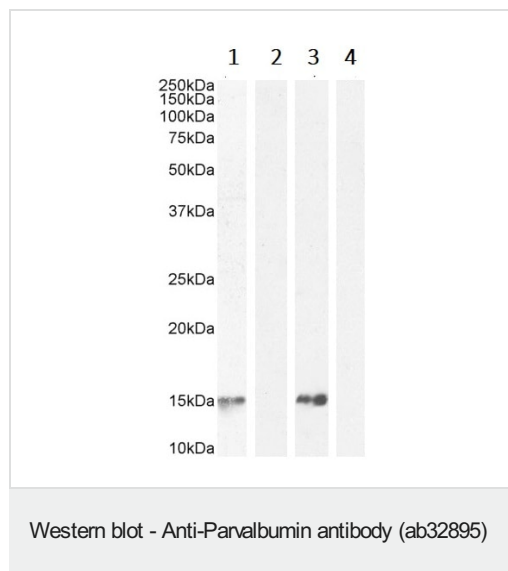
アプリケーション	Abreviews	特記事項
WB	★★★★★ (1)	Use a concentration of 0.01 - 0.3 µg/ml. Detects a band of approximately 12 kDa (predicted molecular weight: 12 kDa). Block using milk. Primary incubation 1 hour at room temperature. Recommended concentration: 0.1-0.3µg/ml.
Flow Cyt		Use a concentration of 10 µg/ml.

ターゲット情報

機能 In muscle, parvalbumin is thought to be involved in relaxation after contraction. It binds two calcium ions.

配列類似性 Belongs to the parvalbumin family.
Contains 2 EF-hand domains.

画像



Lanes 1-2 : Anti-Parvalbumin antibody (ab32895) at 0.01 µg/ml

Lanes 3-4 : Anti-Parvalbumin antibody (ab32895) at 0.3 µg/ml

Lane 1 : Human cerebellum tissue lysate

Lane 2 : Human cerebellum tissue lysate + peptide

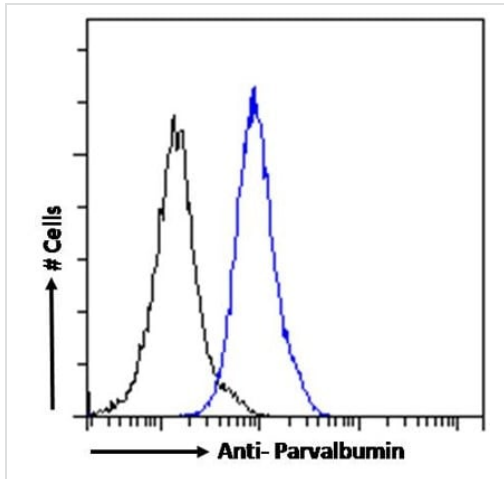
Lane 3 : Rat brain tissue lysate

Lane 4 : Rat brain tissue lysate + peptide

Lysates/proteins at 35 µg per lane.

Predicted band size: 12 kDa

Lysate in RIPA buffer. Detected by chemiluminescence.



Flow Cytometry - Anti-Parvalbumin antibody
(ab32895)

Flow cytometric analysis of paraformaldehyde fixed Kelly cells (blue line), permeabilized with 0.5% Triton. Primary incubation 1 hr (10µg/mL) followed by Alexa Fluor 488 secondary antibody (1µg/mL). IgG control: Unimmunized goat IgG (black line) followed by Alexa Fluor 488 secondary antibody.

Please note: All products are "FOR RESEARCH USE ONLY. NOT FOR USE IN DIAGNOSTIC PROCEDURES"

Our Abpromise to you: Quality guaranteed and expert technical support

- Replacement or refund for products not performing as stated on the datasheet
- Valid for 12 months from date of delivery
- Response to your inquiry within 24 hours
- We provide support in Chinese, English, French, German, Japanese and Spanish
- Extensive multi-media technical resources to help you
- We investigate all quality concerns to ensure our products perform to the highest standards

If the product does not perform as described on this datasheet, we will offer a refund or replacement. For full details of the Abpromise, please visit <https://www.abcam.co.jp/abpromise> or contact our technical team.

Terms and conditions

- Guarantee only valid for products bought direct from Abcam or one of our authorized distributors