

# Anti-PARP9 antibody ab53796

[4 References](#) [画像数 1](#)

### 製品の概要

---

製品名	Anti-PARP9 antibody
製品の詳細	Rabbit polyclonal to PARP9
由来種	Rabbit
アプリケーション	<b>適用あり:</b> WB, IP
種交差性	<b>交差種:</b> Human
免疫原	Synthetic peptide derived from the C terminal region of the short isoform of human PARP9.
ポジティブ・コントロール	Human Farage non-Hodgkins B-cell lymphoma Human BC-1 B-lymphocyte lymphoma lysates
特記事項	<p>The Life Science industry has been in the grips of a reproducibility crisis for a number of years. Abcam is leading the way in addressing this with our range of recombinant monoclonal antibodies and knockout edited cell lines for gold-standard validation. Please check that this product meets your needs before purchasing.</p> <p>If you have any questions, special requirements or concerns, please send us an inquiry and/or contact our Support team ahead of purchase. Recommended alternatives for this product can be found below, along with publications, customer reviews and Q&amp;As</p>

### 製品の特性

---

製品の状態	Liquid
保存方法	Shipped at 4°C. Store at +4°C short term (1-2 weeks). Upon delivery aliquot. Store at -20°C long term.
バッファー	pH: 7.40 Preservative: 0.1% Sodium azide Constituent: PBS
精製度	Immunogen affinity purified
特記事項(精製)	This antibody is epitope affinity purified from rabbit antiserum.
ポリ/モノ	ポリクローナル
アイソタイプ	IgG

### アプリケーション

---

## The Abpromise guarantee

**Abpromise保証は、次のテスト済みアプリケーションにおけるab53796の使用に適用されます**

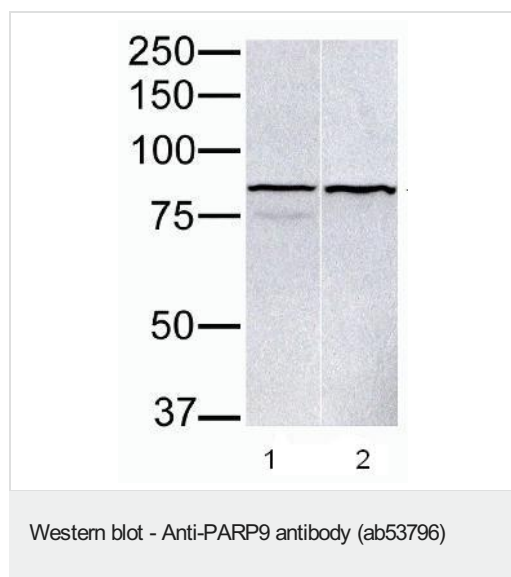
アプリケーションノートには、推奨の開始希釈率がありますが、適切な希釈率につきましてはご検討ください。

アプリケーション	Abreviews	特記事項
WB		Use a concentration of 1 - 3 µg/ml. Detects a band of approximately 88 kDa (predicted molecular weight: 96 kDa).
IP		Use at an assay dependent concentration. Use at a concentration of 7 Åµg/reaction.

## ターゲット情報

機能	Involved in inducing the expression of IFN-gamma-responsive genes.
組織特異性	Expressed in lymphocyte-rich tissues, spleen, lymph nodes, peripheral blood lymphocytes and colonic mucosa. Also expressed in nonhematopoietic tissues such as heart and skeletal muscle. Isoform 2 is the predominant form. Most abundantly expressed in lymphomas with a brisk host inflammatory response. In diffuse large B-cell lymphomas tumors, expressed specifically by malignant B-cells.
関連疾患	Note=Overexpressed at significantly higher levels in fatal high-risk diffuse large B-cell lymphomas (DLB-CL) compared to cured low-risk tumors. Overexpression in B-cell lymphoma transfectants may promote malignant B-cell migration. May therefore be involved in promoting B-cell migration and dissemination of high-risk DLB-CL tumors.
配列類似性	Contains 2 Macro domains. Contains 1 PARP catalytic domain.
細胞内局在	Cytoplasm > cytosol. Nucleus. Shuttles between the nucleus and the cytosol. Export to the cytosol depends on the interaction with DTX3L.

## 画像



**All lanes :** Anti-PARP9 antibody (ab53796) at 1 µg/ml

**Lane 1 :** Farage (human non-Hodgkin's lymphoma B cell line) cell lysate

**Lane 2 :** BC-1 (human B-cell lymphoma cell line) cell lysate

**Predicted band size:** 96 kDa

**Observed band size:** 88 kDa

## **Our Abpromise to you: Quality guaranteed and expert technical support**

---

- Replacement or refund for products not performing as stated on the datasheet
- Valid for 12 months from date of delivery
- Response to your inquiry within 24 hours
  
- We provide support in Chinese, English, French, German, Japanese and Spanish
- Extensive multi-media technical resources to help you
- We investigate all quality concerns to ensure our products perform to the highest standards

If the product does not perform as described on this datasheet, we will offer a refund or replacement. For full details of the Abpromise, please visit <https://www.abcam.co.jp/abpromise> or contact our technical team.

## **Terms and conditions**

---

- Guarantee only valid for products bought direct from Abcam or one of our authorized distributors