

Anti-PARP1 antibody ab194586

★★★★★ [1 Abreviews](#) [15 References](#) [画像数 7](#)

製品の概要

製品名	Anti-PARP1 antibody
製品の詳細	Rabbit polyclonal to PARP1
由来種	Rabbit
アプリケーション	適用あり: IHC-P, WB, ICC/IF
種交差性	交差種: Mouse, Rat, Human
免疫原	Synthetic peptide within Human PARP1 aa 150-250. The exact sequence is proprietary. Database link: P09874
ポジティブ・コントロール	WB: Extracts from A549, Jurkat, HeLa, K562, Raji, HepG2 and Y79 cell lines. Mouse testis lysate. ICC/IF: NIH/3T3 and U-2 OS cells.
特記事項	<p>The Life Science industry has been in the grips of a reproducibility crisis for a number of years. Abcam is leading the way in addressing this with our range of recombinant monoclonal antibodies and knockout edited cell lines for gold-standard validation. Please check that this product meets your needs before purchasing.</p> <p>If you have any questions, special requirements or concerns, please send us an inquiry and/or contact our Support team ahead of purchase. Recommended alternatives for this product can be found below, along with publications, customer reviews and Q&As</p>

製品の特性

製品の状態	Liquid
保存方法	Shipped at 4°C. Store at +4°C short term (1-2 weeks). Upon delivery aliquot. Store at -20°C long term. Avoid freeze / thaw cycle.
バッファー	pH: 7.30 Preservative: 0.02% Sodium azide Constituents: PBS, 50% Glycerol
精製度	Immunogen affinity purified
ポリ/モノ	ポリクローナル
アイソタイプ	IgG

アプリケーション

The Abpromise guarantee

Abpromise保証は、次のテスト済みアプリケーションにおけるab194586の使用に適用されます

アプリケーションノートには、推奨の開始希釈率がありますが、適切な希釈率につきましてはご検討ください。

アプリケーション	Abreviews	特記事項
IHC-P		1/20 - 1/50.
WB	★★★★★ (1)	1/1000 - 1/2000. Predicted molecular weight: 113 kDa.
ICC/IF		1/50 - 1/100.

ターゲット情報

機能

Involved in the base excision repair (BER) pathway, by catalyzing the poly(ADP-ribosyl)ation of a limited number of acceptor proteins involved in chromatin architecture and in DNA metabolism. This modification follows DNA damages and appears as an obligatory step in a detection/signaling pathway leading to the reparation of DNA strand breaks. Mediates the poly(ADP-ribosyl)ation of APLF and CHFR. Positively regulates the transcription of MTUS1 and negatively regulates the transcription of MTUS2/TIP150.

配列類似性

Contains 1 BRCT domain.
Contains 1 PARP alpha-helical domain.
Contains 1 PARP catalytic domain.
Contains 2 PARP-type zinc fingers.

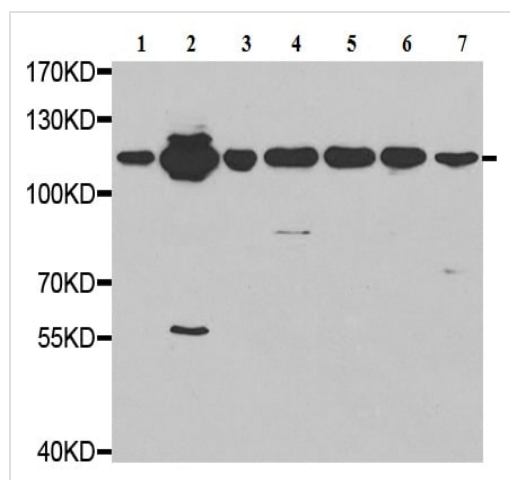
翻訳後修飾

Phosphorylated by PRKDC. Phosphorylated upon DNA damage, probably by ATM or ATR. Poly-ADP-ribosylated by PARP2. Poly-ADP-ribosylation mediates the recruitment of CHD1L to DNA damage sites.
S-nitrosylated, leading to inhibit transcription regulation activity.

細胞内局在

Nucleus.

画像



Western blot - Anti-PARP1 antibody (ab194586)

All lanes : Anti-PARP1 antibody (ab194586) at 1/1000 dilution

Lane 1 : Extract from A549 (Human lung carcinoma cell line) cell line

Lane 2 : Extract from Jurkat (Human T cell leukemia cell line from peripheral blood) cell line

Lane 3 : Extract from Hela (Human epithelial cell line from cervix adenocarcinoma) cell line

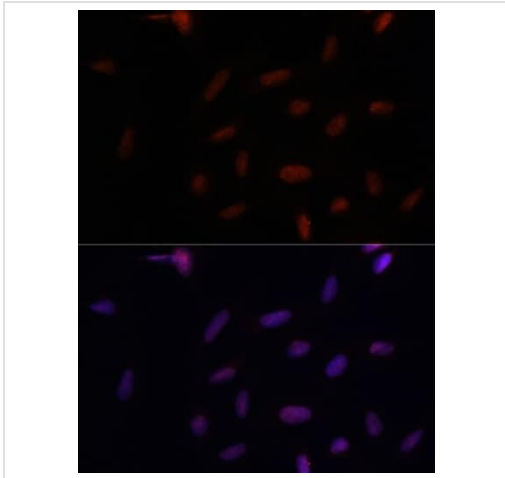
Lane 4 : Extract from K562 (Human chronic myelogenous leukemia cell line from bone marrow) cell line

Lane 5 : Extract from Raji (Human Burkitt's lymphoma cell line) cell line

Lane 6 : Extract from HepG2 (Human liver hepatocellular carcinoma cell line) cell line

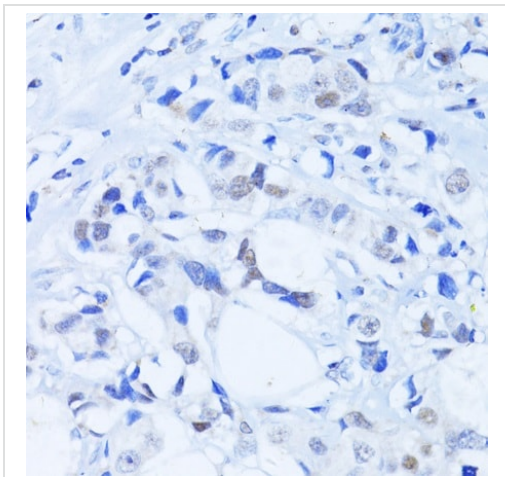
Lane 7 : Extract from Y79 (Human retinoblastoma cell line) cell line

Predicted band size: 113 kDa



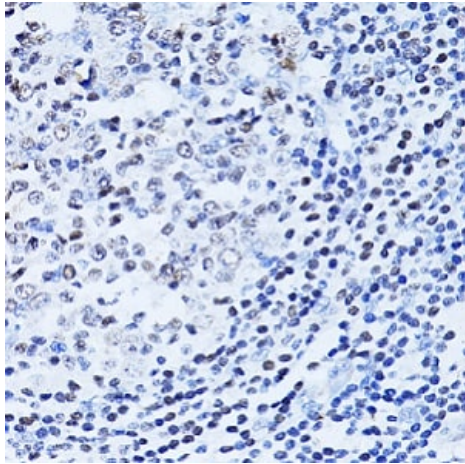
U-2 OS (Human bone osteosarcoma epithelial cell line) cells stained for PARP1 using ab194586 at a dilution of 1/100 in ICC/IF. Blue: DAPI for nuclear staining.

Immunocytochemistry/ Immunofluorescence - Anti-PARP1 antibody (ab194586)



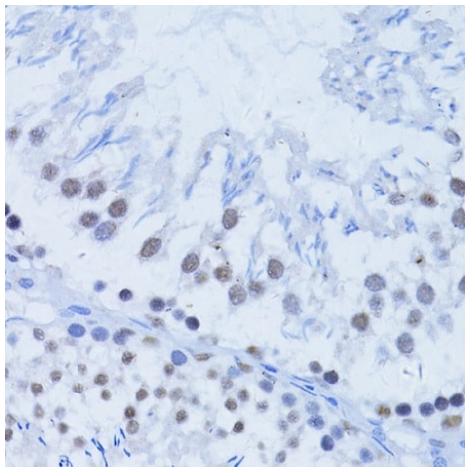
Immunohistochemistry of Human breast cancer tissue staining PARP1 with ab194586

Immunohistochemistry (Formalin/PFA-fixed paraffin-embedded sections) - Anti-PARP1 antibody (ab194586)



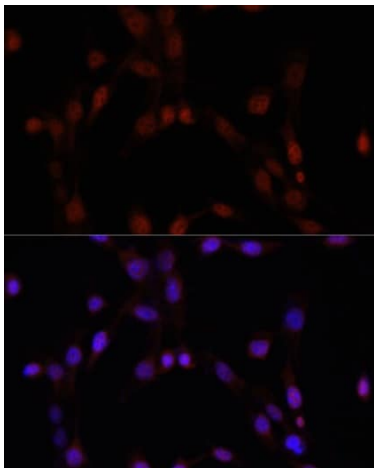
Immunohistochemistry of Human appendix tissue staining PARP1 with ab194586

Immunohistochemistry (Formalin/PFA-fixed paraffin-embedded sections) - Anti-PARP1 antibody (ab194586)



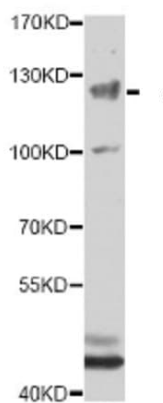
Immunohistochemistry of rat testis tissue staining PARP1 with ab194586

Immunohistochemistry (Formalin/PFA-fixed paraffin-embedded sections) - Anti-PARP1 antibody (ab194586)



Immunocytochemistry/ Immunofluorescence - Anti-PARP1 antibody (ab194586)

NIH-3T3 (Mouse embryo fibroblast cell line) cells stained for PARP1 using ab194586 at a dilution of 1/100 in ICC/IF. Blue: DAPI for nuclear staining.



Western blot - Anti-PARP1 antibody (ab194586)

Anti-PARP1 antibody (ab194586) at 1/1000 dilution + Mouse testis lysate at 25 μ g

Secondary

HRP Goat Anti-Rabbit IgG (H+L) at 1/10000 dilution

Developed using the ECL technique.

Predicted band size: 113 kDa

Exposure time: 90 seconds

Blocking buffer: 3% non-fat dry milk in TBST.

Please note: All products are "FOR RESEARCH USE ONLY. NOT FOR USE IN DIAGNOSTIC PROCEDURES"

Our Abpromise to you: Quality guaranteed and expert technical support

- Replacement or refund for products not performing as stated on the datasheet
- Valid for 12 months from date of delivery
- Response to your inquiry within 24 hours
- We provide support in Chinese, English, French, German, Japanese and Spanish

- Extensive multi-media technical resources to help you
- We investigate all quality concerns to ensure our products perform to the highest standards

If the product does not perform as described on this datasheet, we will offer a refund or replacement. For full details of the Abpromise, please visit <https://www.abcam.co.jp/abpromise> or contact our technical team.

Terms and conditions

- Guarantee only valid for products bought direct from Abcam or one of our authorized distributors