


# Anti-PARL antibody ab118554

画像数 2

### 製品の概要

製品名	Anti-PARL antibody
製品の詳細	Rabbit polyclonal to PARL
由来種	Rabbit
アプリケーション	<b>適用あり:</b> WB, IHC-P
種交差性	<b>交差種:</b> Mouse, Human <b>交差が予測される動物種:</b> Rat 
免疫原	Synthetic peptide containing 15 amino acids from the N-terminal region of Human PARL (NP_061092.3).
ポジティブ・コントロール	Human pancreas tissue; 3T3 cell lysate.
特記事項	<p>The Life Science industry has been in the grips of a reproducibility crisis for a number of years. Abcam is leading the way in addressing this with our range of recombinant monoclonal antibodies and knockout edited cell lines for gold-standard validation. Please check that this product meets your needs before purchasing.</p> <p>If you have any questions, special requirements or concerns, please send us an inquiry and/or contact our Support team ahead of purchase. Recommended alternatives for this product can be found below, along with publications, customer reviews and Q&amp;As</p>

### 製品の特性

製品の状態	Liquid
保存方法	Shipped at 4°C. Upon delivery aliquot and store at -20°C. Avoid repeated freeze / thaw cycles.
バッファー	pH: 7.4 Preservative: 0.02% Sodium azide Constituent: 99% PBS
精製度	Protein A purified
ポリ/モノ	ポリクローナル
アイソタイプ	IgG

### アプリケーション

## The Abpromise guarantee

Abpromise保証は、次のテスト済みアプリケーションにおけるab118554の使用に適用されます

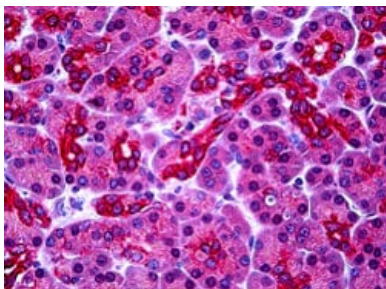
アプリケーションノートには、推奨の開始希釈率がありますが、適切な希釈率につきましてはご確認ください。

アプリケーション	Abreviews	特記事項
WB		Use a concentration of 1 - 2 µg/ml. Predicted molecular weight: 42 kDa.
IHC-P		Use a concentration of 5 µg/ml.

## ターゲット情報

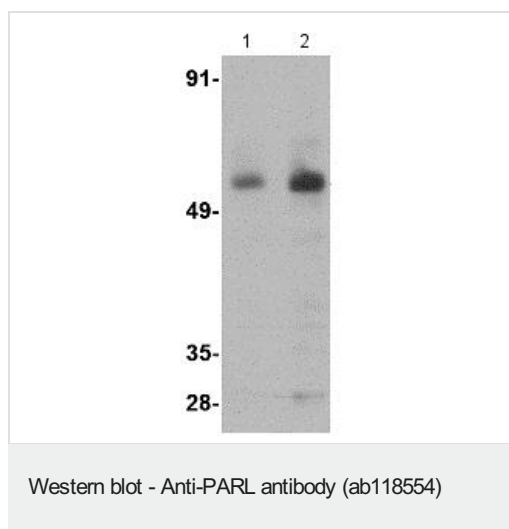
機能	Required for the control of apoptosis during postnatal growth. Essential for proteolytic processing of an antiapoptotic form of OPA1 which prevents the release of mitochondrial cytochrome c in response to intrinsic apoptotic signals (By similarity). Promotes changes in mitochondria morphology regulated by phosphorylation of P-beta domain.
配列類似性	Belongs to the peptidase S54 family.
翻訳後修飾	P-beta is proteolytically processed (beta-cleavage) in a PARL-dependent manner. The cleavage is inhibited when residues Ser-65, Thr-69 and Ser-70 are all phosphorylated.
細胞内局在	Mitochondrion inner membrane and Nucleus. Translocated into the nucleus by an unknown mechanism.

## 画像



ab118554 at 5µg/ml staining PARL in Formalin-Fixed, Paraffin-Embedded Human pancreas tissue by immunohistochemistry.

Immunohistochemistry (Formalin/PFA-fixed paraffin-embedded sections) - Anti-PARL antibody (ab118554)



**Lane 1 :** Anti-PARL antibody (ab118554) at 1 µg/ml

**Lane 2 :** Anti-PARL antibody (ab118554) at 2 µg/ml

**All lanes :** 3T3 cell lysate

**Predicted band size:** 42 kDa

**Please note:** All products are "FOR RESEARCH USE ONLY. NOT FOR USE IN DIAGNOSTIC PROCEDURES"

### Our Abpromise to you: Quality guaranteed and expert technical support

---

- Replacement or refund for products not performing as stated on the datasheet
- Valid for 12 months from date of delivery
- Response to your inquiry within 24 hours
- We provide support in Chinese, English, French, German, Japanese and Spanish
- Extensive multi-media technical resources to help you
- We investigate all quality concerns to ensure our products perform to the highest standards

If the product does not perform as described on this datasheet, we will offer a refund or replacement. For full details of the Abpromise, please visit <https://www.abcam.co.jp/abpromise> or contact our technical team.

### Terms and conditions

---

- Guarantee only valid for products bought direct from Abcam or one of our authorized distributors