


Anti-Parathyroid Hormone Receptor 1/PTH1R antibody ab75150

★★★★★ [3 Abreviews](#) [7 References](#) [画像数 4](#)

製品の概要

製品名	Anti-Parathyroid Hormone Receptor 1/PTH1R antibody
製品の詳細	Rabbit polyclonal to Parathyroid Hormone Receptor 1/PTH1R
由来種	Rabbit
アプリケーション	適用あり: WB, IHC-P, ICC/IF
種交差性	交差種: Human 交差が予測される動物種: Mouse, Rat 
免疫原	Synthetic peptide. This information is proprietary to Abcam and/or its suppliers.
特記事項	<p>The Life Science industry has been in the grips of a reproducibility crisis for a number of years. Abcam is leading the way in addressing this with our range of recombinant monoclonal antibodies and knockout edited cell lines for gold-standard validation. Please check that this product meets your needs before purchasing.</p> <p>If you have any questions, special requirements or concerns, please send us an inquiry and/or contact our Support team ahead of purchase. Recommended alternatives for this product can be found below, along with publications, customer reviews and Q&As</p>

製品の特性

製品の状態	Liquid
保存方法	Shipped at 4°C. Upon delivery aliquot and store at -20°C. Avoid freeze / thaw cycles.
バッファー	<p>pH: 7.40</p> <p>Preservative: 0.02% Sodium azide</p> <p>Constituents: 50% Glycerol, 0.87% Sodium chloride, PBS</p> <p>Without Mg²⁺ and Ca²⁺</p>
精製度	Immunogen affinity purified
ポリ/モノ	ポリクローナル
アイソタイプ	IgG

アプリケーション

The Abpromise guarantee

Abpromise保証は、次のテスト済みアプリケーションにおけるab75150の使用に適用されます

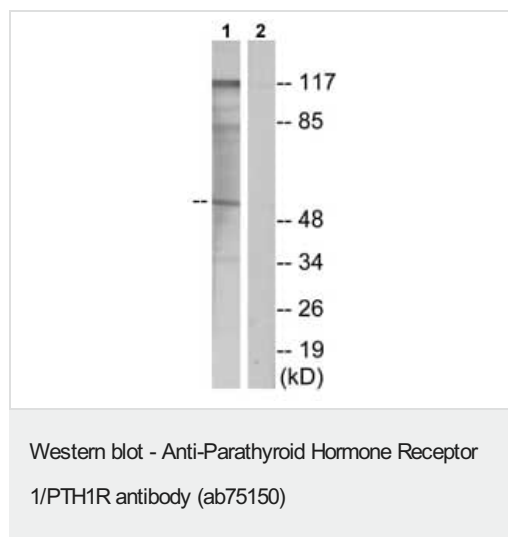
アプリケーションノートには、推奨の開始希釈率がありますが、適切な希釈率につきましてはご検討ください。

アプリケーション	Abreviews	特記事項
WB	★☆☆☆☆ (1)	1/500 - 1/1000. Predicted molecular weight: 66 kDa.
IHC-P	★★★★★ (1)	1/50 - 1/100.
ICC/IF		1/500 - 1/1000.

ターゲット情報

機能	Receptor for parathyroid hormone and for parathyroid hormone-related peptide. The activity of this receptor is mediated by G proteins which activate adenylyl cyclase and also a phosphatidylinositol-calcium second messenger system.
組織特異性	Expressed in most tissues. Most abundant in kidney, bone and liver.
関連疾患	Jansen metaphyseal chondrodysplasia Chondrodysplasia Blomstrand type Enchondromatosis multiple Eiken skeletal dysplasia Primary failure of tooth eruption
配列類似性	Belongs to the G-protein coupled receptor 2 family.
細胞内局在	Cell membrane.

画像



All lanes : Anti-Parathyroid Hormone Receptor 1/PTH1R antibody (ab75150) at 1/500 dilution

Lane 1 : Extracts from Jurkat cells

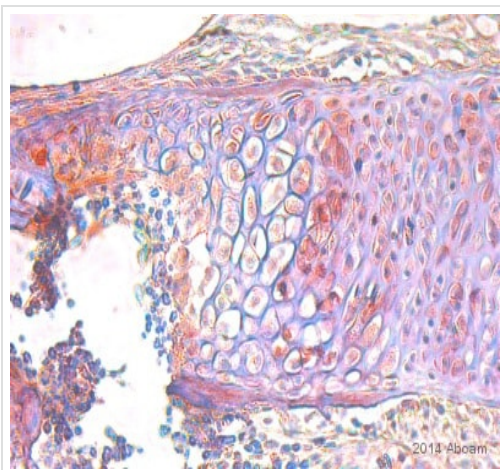
Lane 2 : Extracts from Jurkat cells with immunising peptide at 5 µg

Lysates/proteins at 5 µg per lane.

Predicted band size: 66 kDa

Observed band size: 56 kDa

Additional bands at: 117 kDa, 82 kDa. We are unsure as to the identity of these extra bands.

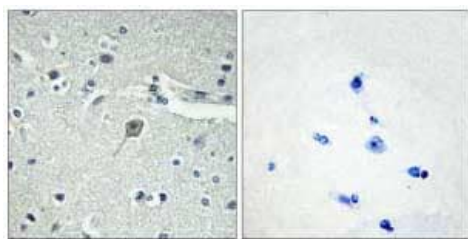


Immunohistochemistry (Formalin/PFA-fixed paraffin-embedded sections) - Anti-Parathyroid Hormone Receptor 1/PTH1R antibody (ab75150)

This image is courtesy of an Abreview submitted by Thomas Lozito

ab75150 staining Parathyroid Hormone Receptor 1/PTH1R in Lizard regenerated tail (*Anolis sagrei*) tissue sections by Immunohistochemistry (IHC-P - paraformaldehyde-fixed, paraffin-embedded sections). Tissue was fixed with paraformaldehyde and blocked with 1% serum for 45 minutes at 22°C; antigen retrieval was by heat mediation in sodium citrate buffer, pH 6.0. Samples were incubated with primary antibody (1/200 in 1% horse serum) for 16 hours at 4°C. A Biotin-conjugated horse anti-rabbit IgG polyclonal (1/50) was used as the secondary antibody.

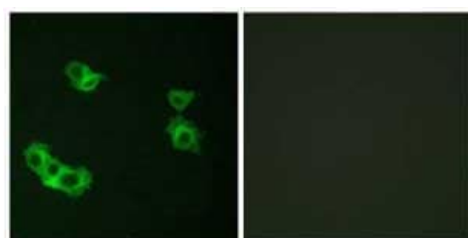
Image is of a regenerated lizard tail cartilage tube, at a proximal region that has begun to ossify. Positive staining was observed in structures resembling embryonic bone collar and early hypertrophic chondrocytes.



Peptide - +

Immunohistochemistry (Formalin/PFA-fixed paraffin-embedded sections) - Anti-Parathyroid Hormone Receptor 1/PTH1R antibody (ab75150)

Immunohistochemistry analysis of Parathyroid Hormone Receptor 1/PTH1R in paraffin-embedded human brain tissue using ab75150, at 1/50 dilution, in the presence (right panel) or absence (left panel) of immunising peptide.



Peptide - +

Immunocytochemistry/ Immunofluorescence - Anti-Parathyroid Hormone Receptor 1/PTH1R antibody (ab75150)

Immunofluorescence analysis of Parathyroid Hormone Receptor 1/PTH1R in MCF7 cells using ab75150, at 1/500 dilution, in the presence (right panel) or absence (left panel) of immunising peptide.

Please note: All products are "FOR RESEARCH USE ONLY. NOT FOR USE IN DIAGNOSTIC PROCEDURES"

Our Abpromise to you: Quality guaranteed and expert technical support

- Replacement or refund for products not performing as stated on the datasheet
- Valid for 12 months from date of delivery
- Response to your inquiry within 24 hours

- We provide support in Chinese, English, French, German, Japanese and Spanish
- Extensive multi-media technical resources to help you
- We investigate all quality concerns to ensure our products perform to the highest standards

If the product does not perform as described on this datasheet, we will offer a refund or replacement. For full details of the Abpromise, please visit <https://www.abcam.co.jp/abpromise> or contact our technical team.

Terms and conditions

- Guarantee only valid for products bought direct from Abcam or one of our authorized distributors