


Anti-Parathyroid Hormone antibody ab40630

1 References [画像数 1](#)

製品の概要

製品名	Anti-Parathyroid Hormone antibody
製品の詳細	Rabbit polyclonal to Parathyroid Hormone
由来種	Rabbit
アプリケーション	適用あり: RIA, ICC, ELISA, WB, IHC-FoFr
種交差性	交差種: Human 交差が予測される動物種: Cynomolgus monkey 
免疫原	Synthetic peptide corresponding to Human Parathyroid Hormone aa 32-65. Sequence: SVSEIQLMHN LGKHLNSMER VEWLRKKLQD VHNF

Database link: **P01270**

 **Run BLAST with**

 **Run BLAST with**

特記事項

The Life Science industry has been in the grips of a reproducibility crisis for a number of years. Abcam is leading the way in addressing this with our range of recombinant monoclonal antibodies and knockout edited cell lines for gold-standard validation. Please check that this product meets your needs before purchasing.

If you have any questions, special requirements or concerns, please send us an inquiry and/or contact our Support team ahead of purchase. Recommended alternatives for this product can be found below, along with publications, customer reviews and Q&As

製品の特性

製品の状態	Liquid
保存方法	Shipped at 4°C. Upon delivery aliquot. Store at -20°C or -80°C. Avoid freeze / thaw cycle.
バッファー	Constituents: 0.01% BSA, PBS
精製度	Whole antiserum
ポリ/モノ	ポリクローナル
アイソタイプ	IgG

アプリケーション

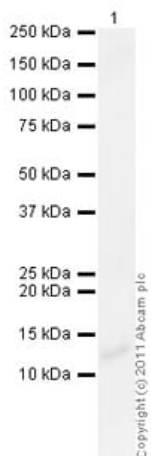
The Abpromise guarantee **Abpromise保証は、**次のテスト済みアプリケーションにおけるab40630の使用に適用されます
 アプリケーションノートには、推奨の開始希釈率がありますが、適切な希釈率につきましてはご検討ください。

アプリケーション	Abreviews	特記事項
RIA		Use at an assay dependent concentration.
ICC		Use at an assay dependent concentration.
ELISA		Use at an assay dependent concentration.
WB		Use at an assay dependent concentration. Predicted molecular weight: 13 kDa. Blocking with 5% goat or donkey serum significantly reduces background as compared to BSA or milk.
IHC-FoFr		Use at an assay dependent concentration.

ターゲット情報

機能	PTH elevates calcium level by dissolving the salts in bone and preventing their renal excretion. Stimulates [1-14C]-2-deoxy-D-glucose (2DG) transport and glycogen synthesis in osteoblastic cells.
関連疾患	Defects in PTH are a cause of familial isolated hypoparathyroidism (FIH) [MIM:146200]; also called autosomal dominant hypoparathyroidism or autosomal dominant hypocalcemia. FIH is characterized by hypocalcemia and hyperphosphatemia due to inadequate secretion of parathyroid hormone. Symptoms are seizures, tetany and cramps. FIH exist both as autosomal dominant and recessive forms of hypoparathyroidism.
配列類似性	Belongs to the parathyroid hormone family.
細胞内局在	Secreted.

画像



Western blot - Anti-Parathyroid Hormone antibody
(ab40630)

Anti-Parathyroid Hormone antibody (ab40630) at 1 µg/ml +
Recombinant Human Parathyroid Hormone protein ([ab51234](#)) at
0.01 µg

Secondary

Goat Anti-Rabbit IgG H&L (HRP) preadsorbed ([ab97080](#)) at
1/5000 dilution

Developed using the ECL technique.

Performed under reducing conditions.

Predicted band size: 13 kDa

Exposure time: 4 minutes

Please note: All products are "FOR RESEARCH USE ONLY. NOT FOR USE IN DIAGNOSTIC PROCEDURES"

Our Abpromise to you: Quality guaranteed and expert technical support

- Replacement or refund for products not performing as stated on the datasheet
- Valid for 12 months from date of delivery
- Response to your inquiry within 24 hours
- We provide support in Chinese, English, French, German, Japanese and Spanish
- Extensive multi-media technical resources to help you
- We investigate all quality concerns to ensure our products perform to the highest standards

If the product does not perform as described on this datasheet, we will offer a refund or replacement. For full details of the Abpromise, please visit <https://www.abcam.co.jp/abpromise> or contact our technical team.

Terms and conditions

- Guarantee only valid for products bought direct from Abcam or one of our authorized distributors