

Anti-PAR6 antibody ab49776

8 References [画像数 2](#)

製品の概要

製品名	Anti-PAR6 antibody
製品の詳細	Rabbit polyclonal to PAR6
由来種	Rabbit
アプリケーション	適用あり: ICC/IF, WB
種交差性	交差種: Human
免疫原	Synthetic peptide corresponding to Human PAR6 aa 300 to the C-terminus conjugated to keyhole limpet haemocyanin. (Peptide available as ab49775)
ポジティブ・コントロール	This antibody gave a positive signal using a PAR6A partial Human Recombinant Tagged Protein
特記事項	<p>The Life Science industry has been in the grips of a reproducibility crisis for a number of years. Abcam is leading the way in addressing this with our range of recombinant monoclonal antibodies and knockout edited cell lines for gold-standard validation. Please check that this product meets your needs before purchasing.</p> <p>If you have any questions, special requirements or concerns, please send us an inquiry and/or contact our Support team ahead of purchase. Recommended alternatives for this product can be found below, along with publications, customer reviews and Q&As</p>

製品の特性

製品の状態	Liquid
保存方法	Shipped at 4°C. Store at +4°C short term (1-2 weeks). Upon delivery aliquot. Store at -20°C or -80°C. Avoid freeze / thaw cycle.
バッファー	<p>pH: 7.40</p> <p>Preservative: 0.02% Sodium azide</p> <p>Constituent: PBS</p> <p>Batches of this product that have a concentration < 1mg/ml may have BSA added as a stabilising agent. If you would like information about the formulation of a specific lot, please contact our scientific support team who will be happy to help.</p>
精製度	Immunogen affinity purified

ポリモノ
アイソタイプ

ポリクローナル
IgG

アプリケーション

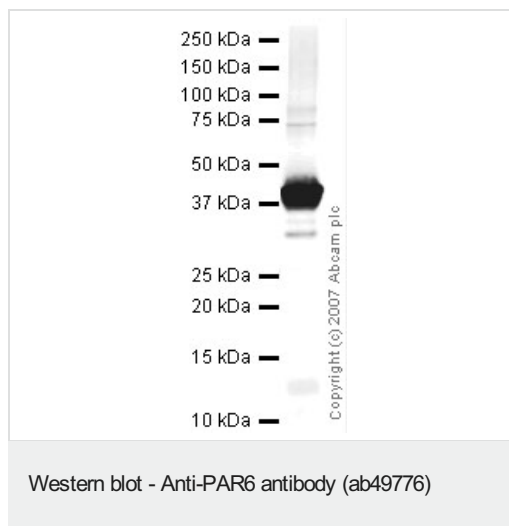
The Abpromise guarantee **Abpromise保証は、** 次のテスト済みアプリケーションにおけるab49776の使用に適用されます
アプリケーションノートには、推奨の開始希釈率がありますが、適切な希釈率につきましてはご検討ください。

アプリケーション	Abreviews	特記事項
ICC/IF		Use a concentration of 5 µg/ml.
WB		Use a concentration of 1 µg/ml. Detects a band of approximately 37 kDa (predicted molecular weight: 37 kDa).

ターゲット情報

機能	Adapter protein involved in asymmetrical cell division and cell polarization processes. Probably involved in the formation of epithelial tight junctions. Association with PARD3 may prevent the interaction of PARD3 with F11R/JAM1, thereby preventing tight junction assembly. The PARD6-PARD3 complex links GTP-bound Rho small GTPases to atypical protein kinase C proteins.
組織特異性	Expressed in pancreas, skeletal muscle, brain and heart. Weakly expressed in kidney and placenta.
配列類似性	Belongs to the PAR6 family. Contains 1 OPR domain. Contains 1 PDZ (DHR) domain. Contains 1 pseudo-CRIB domain.
ドメイン	The pseudo-CRIB domain together with the PDZ domain is required for the interaction with Rho small GTPases. The OPR domain mediates interactions with MAP2K5. The PDZ domain mediates the interaction with CRB3.
細胞内局在	Cytoplasm. Cell membrane. Cell projection > ruffle. Cell junction > tight junction. Colocalizes with GTP-bound CDC42 or RAC1 at membrane ruffles and with PARD3 and PRKCI at epithelial tight junctions.

画像



Anti-PAR6 antibody (ab49776) at 1 µg/ml + PARD6A partial
Human Recombinant Tagged Protein at 0.2 µg

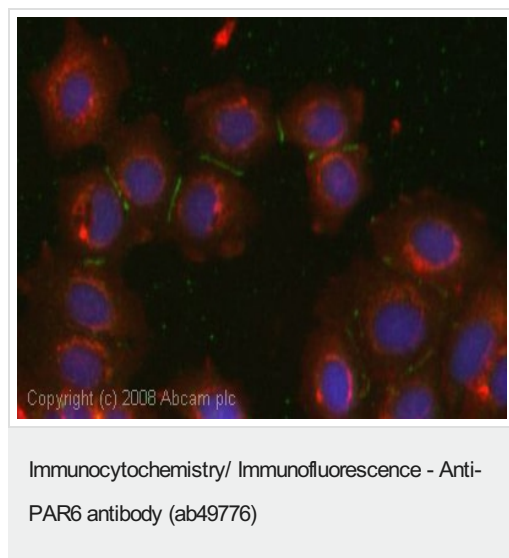
Secondary

IRDye 680 Conjugated Goat Anti-Rabbit IgG (H+L) at 1/10000
dilution

Performed under reducing conditions.

Predicted band size: 37 kDa

Observed band size: 37 kDa



ICC/IF image of ab49776 stained human MCF7 cells. The cells were methanol fixed (5 min), permeabilised in 0.1% PBS-Tween (20 min) and incubated with the antibody (ab49776, 5µg/ml) for 1h at room temperature. 1%BSA / 10% normal goat serum / 0.3M glycine was used to block non-specific protein-protein interactions. The secondary antibody (green) was Alexa Fluor® 488 goat anti-rabbit IgG (H+L) used at a 1/1000 dilution for 1h. Alexa Fluor® 594 WGA was used to label plasma membranes (red). DAPI was used to stain the cell nuclei (blue). This antibody also gave a positive IF result in HeLa and HEK 293 cells.

Please note: All products are "FOR RESEARCH USE ONLY. NOT FOR USE IN DIAGNOSTIC PROCEDURES"

Our Abpromise to you: Quality guaranteed and expert technical support

- Replacement or refund for products not performing as stated on the datasheet
- Valid for 12 months from date of delivery
- Response to your inquiry within 24 hours
- We provide support in Chinese, English, French, German, Japanese and Spanish
- Extensive multi-media technical resources to help you

- We investigate all quality concerns to ensure our products perform to the highest standards

If the product does not perform as described on this datasheet, we will offer a refund or replacement. For full details of the Abpromise, please visit <https://www.abcam.co.jp/abpromise> or contact our technical team.

Terms and conditions

- Guarantee only valid for products bought direct from Abcam or one of our authorized distributors