

# Anti-PAR1/Thrombin Receptor antibody ab117749

画像数 2

### 製品の概要

製品名	Anti-PAR1/Thrombin Receptor antibody
製品の詳細	Rabbit polyclonal to PAR1/Thrombin Receptor
由来種	Rabbit
アプリケーション	<b>適用あり:</b> WB, IHC-P
種交差性	<b>交差種:</b> Human <b>交差が予測される動物種:</b> Chimpanzee, Macaque monkey, Gorilla, Orangutan 
免疫原	Synthetic peptide. This information is proprietary to Abcam and/or its suppliers.
ポジティブ・コントロール	This antibody gave a positive result in IHC in the following FFPE tissue: Human lung adenocarcinoma. This antibody gave a positive signal in WB within Human Platelet tissue lysate.
特記事項	<p>The Life Science industry has been in the grips of a reproducibility crisis for a number of years. Abcam is leading the way in addressing this with our range of recombinant monoclonal antibodies and knockout edited cell lines for gold-standard validation. Please check that this product meets your needs before purchasing.</p> <p>If you have any questions, special requirements or concerns, please send us an inquiry and/or contact our Support team ahead of purchase. Recommended alternatives for this product can be found below, along with publications, customer reviews and Q&amp;As</p>

### 製品の特性

製品の状態	Liquid
保存方法	Shipped at 4°C. Store at +4°C short term (1-2 weeks). Upon delivery aliquot. Store at -20°C or -80°C. Avoid freeze / thaw cycle.
バッファー	pH: 7.40 Preservative: 0.02% Sodium azide Constituent: PBS  Batches of this product that have a concentration < 1mg/ml may have BSA added as a stabilising agent. If you would like information about the formulation of a specific lot, please contact our scientific support team who will be happy to help.
精製度	Immunogen affinity purified
ポリ/モノ	ポリクローナル

## アプリケーション

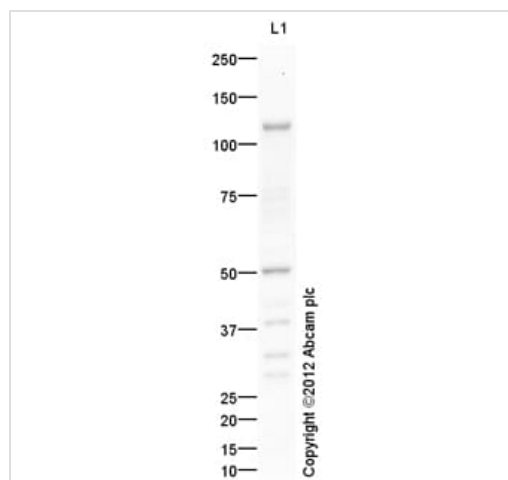
**The Abpromise guarantee** Abpromise保証は、次のテスト済みアプリケーションにおけるab117749の使用に適用されます  
アプリケーションノートには、推奨の開始希釈率がありますが、適切な希釈率につきましてはご検討ください。

アプリケーション	Abreviews	特記事項
WB		Use a concentration of 1 µg/ml. Detects a band of approximately 50 kDa (predicted molecular weight: 47 kDa).
IHC-P		Use a concentration of 1 µg/ml. Perform heat mediated antigen retrieval with citrate buffer pH 6 before commencing with IHC staining protocol.

## ターゲット情報

機能	High affinity receptor for activated thrombin coupled to G proteins that stimulate phosphoinositide hydrolysis. May play a role in platelets activation and in vascular development.
組織特異性	Platelets and vascular endothelial cells.
配列類似性	Belongs to the G-protein coupled receptor 1 family.
翻訳後修飾	A proteolytic cleavage generates a new N-terminus that functions as a tethered ligand. Phosphorylated; probably mediating desensitization prior to the uncoupling and internalization of the receptor.
細胞内局在	Cell membrane.

## 画像



Western blot - Anti-PAR1/Thrombin Receptor antibody (ab117749)

Anti-PAR1/Thrombin Receptor antibody (ab117749) at 1 µg/ml + Platelet (Human) Whole Cell Lysate at 10 µg

**Secondary**

Goat Anti-Rabbit IgG H&L (HRP) preadsorbed ([ab97080](#)) at 1/5000 dilution

Developed using the ECL technique.

Performed under reducing conditions.

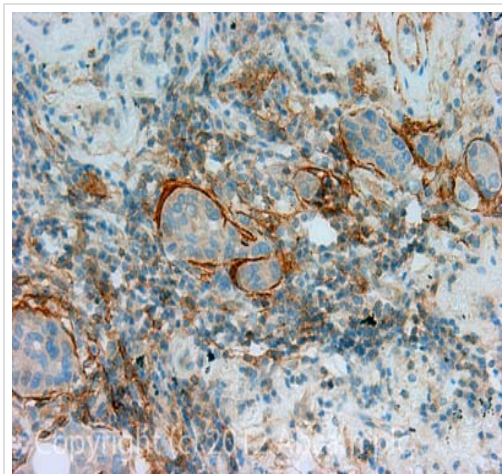
**Predicted band size:** 47 kDa

**Observed band size:** 50 kDa

**Additional bands at:** 116 kDa, 33 kDa, 38 kDa. We are unsure as to the identity of these extra bands.

**Exposure time:** 8 minutes

PAR1/Thrombin Receptor contains a number of potential glycosylation sites (SwissProt) which may explain its migration at a higher molecular weight than predicted.



Immunohistochemistry (Formalin/PFA-fixed paraffin-embedded sections) - Anti-PAR1/Thrombin Receptor antibody (ab117749)

IHC image of PAR1/Thrombin Receptor staining in Human lung adenocarcinoma formalin fixed paraffin embedded tissue section, performed on a Leica Bond™ system using the standard protocol F. The section was pre-treated using heat mediated antigen retrieval with sodium citrate buffer (pH6, epitope retrieval solution 1) for 20 mins. The section was then incubated with ab117749, 1µg/ml, for 15 mins at room temperature and detected using an HRP conjugated compact polymer system. DAB was used as the chromogen. The section was then counterstained with haematoxylin and mounted with DPX.

For other IHC staining systems (automated and non-automated) customers should optimize variable parameters such as antigen retrieval conditions, primary antibody concentration and antibody incubation times.

**Please note:** All products are "FOR RESEARCH USE ONLY. NOT FOR USE IN DIAGNOSTIC PROCEDURES"

### Our Abpromise to you: Quality guaranteed and expert technical support

---

- Replacement or refund for products not performing as stated on the datasheet
- Valid for 12 months from date of delivery
- Response to your inquiry within 24 hours
  
- We provide support in Chinese, English, French, German, Japanese and Spanish
- Extensive multi-media technical resources to help you
- We investigate all quality concerns to ensure our products perform to the highest standards

If the product does not perform as described on this datasheet, we will offer a refund or replacement. For full details of the Abpromise, please visit <https://www.abcam.co.jp/abpromise> or contact our technical team.

### Terms and conditions

---

- Guarantee only valid for products bought direct from Abcam or one of our authorized distributors