

Anti-PAR-3/PARD3 antibody [EP310Y] ab40769

RabMAb[®]

2 References [画像数 1](#)

製品の概要

製品名	Anti-PAR-3/PARD3 antibody [EP310Y]
製品の詳細	Rabbit monoclonal [EP310Y] to PAR-3/PARD3
由来種	Rabbit
特異性	This antibody is predicted to detect isoforms 2-7 based on sequence analysis.
アプリケーション	適用あり: WB 適用なし: ICC/IF, IHC or IP
種交差性	交差種: Human
免疫原	Synthetic peptide. This information is proprietary to Abcam and/or its suppliers.
ポジティブ・コントロール	WB: LNCap, HeLa, A431, MCF-7
特記事項	<p>Our RabMAb[®] technology is a patented hybridoma-based technology for making rabbit monoclonal antibodies. For details on our patents, please refer to RabMAb[®] patents.</p> <p>The Life Science industry has been in the grips of a reproducibility crisis for a number of years. Abcam is leading the way in addressing this with our range of recombinant monoclonal antibodies and knockout edited cell lines for gold-standard validation. Please check that this product meets your needs before purchasing.</p> <p>If you have any questions, special requirements or concerns, please send us an inquiry and/or contact our Support team ahead of purchase. Recommended alternatives for this product can be found below, along with publications, customer reviews and Q&As</p> <p>Mouse, Rat: We have preliminary internal testing data to indicate this antibody may not react with these species. Please contact us for more information.</p>

製品の特性

製品の状態	Liquid
保存方法	Shipped at 4°C. Upon delivery aliquot and store at -20°C. Avoid freeze / thaw cycles.
バッファー	pH: 7.20 Preservative: 0.05% Sodium azide Constituents: 99% Tissue culture supernatant, 0.1% BSA
精製度	Tissue culture supernatant

ポリ/モノ	モノクローナル
クローン名	EP310Y
アイソタイプ	IgG

アプリケーション

The Abpromise guarantee **Abpromise保証は、次のテスト済みアプリケーションにおけるab40769の使用に適用されます**
 アプリケーションノートには、推奨の開始希釈率がありますが、適切な希釈率につきましてはご検討ください。

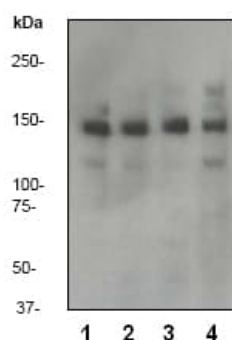
アプリケーション	Abreviews	特記事項
WB		1/500. Detects a band of approximately 150 kDa (predicted molecular weight: 150 kDa).

追加情報 Is unsuitable for ICC/IF, IHC or IP.

ターゲット情報

機能	Adapter protein involved in asymmetrical cell division and cell polarization processes. Seems to play a central role in the formation of epithelial tight junctions. Targets the phosphatase PTEN to cell junctions (By similarity). Association with PARD6B may prevent the interaction of PARD3 with F11R/JAM1, thereby preventing tight junction assembly. The PARD6-PARD3 complex links GTP-bound Rho small GTPases to atypical protein kinase C proteins. Required for establishment of neuronal polarity and normal axon formation in cultured hippocampal neurons.
組織特異性	Widely expressed.
配列類似性	Belongs to the PAR3 family. Contains 3 PDZ (DHR) domains.
ドメイン	Contains a conserved N-terminal oligomerization domain (NTD) that is involved in oligomerization and is essential for proper subapical membrane localization. The second PDZ domain mediates interaction with membranes containing phosphoinositol lipids.
翻訳後修飾	Phosphorylated by PRKCZ. EGF-induced Tyr-1127 phosphorylation mediates dissociation from LIMK2. Phosphorylation by STK6/AURKA at Ser-962 is required for the normal establishment of neuronal polarity.
細胞内局在	Endomembrane system. Cell junction. Cell junction > tight junction. Cell membrane. Cytoplasm > cell cortex. Cytoplasm > cytoskeleton. Localized along the cell-cell contact region. Colocalizes with PARD6A and PRKCI at epithelial tight junctions. Colocalizes with the cortical actin that overlays the meiotic spindle during metaphase I and metaphase II (By similarity). Presence of KRIT1, CDH5 and RAP1B is required for its localization to the cell junction.

画像



Western blot - Anti-PAR-3/PARD3 antibody
[EP310Y] (ab40769)

All lanes : Anti-PAR-3/PARD3 antibody [EP310Y] (ab40769) at 1/500 dilution

Lane 1 : LNCap

Lane 2 : HeLa

Lane 3 : A431

Lane 4 : MCF-7

Lysates/proteins at 10 µg per lane.

Predicted band size: 150 kDa

Observed band size: 150 kDa

Please note: All products are "FOR RESEARCH USE ONLY. NOT FOR USE IN DIAGNOSTIC PROCEDURES"

Our Abpromise to you: Quality guaranteed and expert technical support

- Replacement or refund for products not performing as stated on the datasheet
- Valid for 12 months from date of delivery
- Response to your inquiry within 24 hours
- We provide support in Chinese, English, French, German, Japanese and Spanish
- Extensive multi-media technical resources to help you
- We investigate all quality concerns to ensure our products perform to the highest standards

If the product does not perform as described on this datasheet, we will offer a refund or replacement. For full details of the Abpromise, please visit <https://www.abcam.co.jp/abpromise> or contact our technical team.

Terms and conditions

- Guarantee only valid for products bought direct from Abcam or one of our authorized distributors