


# Anti-PAPOLA antibody ab72492

**1 References** [画像数 1](#)

### 製品の概要

製品名	Anti-PAPOLA antibody
製品の詳細	Rabbit polyclonal to PAPOLA
由来種	Rabbit
アプリケーション	<b>適用あり:</b> WB <b>適用なし:</b> IP
種交差性	<b>交差種:</b> Human <b>交差が予測される動物種:</b> Mouse, Cow, Xenopus laevis 
免疫原	Synthetic peptide within Human PAPOLA aa 650 to the C-terminus (C terminal). The exact immunogen sequence used to generate this antibody is proprietary information. If additional detail on the immunogen is needed to determine the suitability of the antibody for your needs, please <b><u>contact</u></b> our Scientific Support team to discuss your requirements. Database link: <b><u>P51003</u></b>
ポジティブ・コントロール	WB: HeLa whole cell lysate.
特記事項	<p>The Life Science industry has been in the grips of a reproducibility crisis for a number of years. Abcam is leading the way in addressing this with our range of recombinant monoclonal antibodies and knockout edited cell lines for gold-standard validation. Please check that this product meets your needs before purchasing.</p> <p>If you have any questions, special requirements or concerns, please send us an inquiry and/or contact our Support team ahead of purchase. Recommended alternatives for this product can be found below, along with publications, customer reviews and Q&amp;As</p>

### 製品の特性

製品の状態	Liquid
保存方法	Shipped at 4°C. Upon delivery aliquot and store at -20°C. Avoid freeze / thaw cycles.
バッファー	pH: 6.8 Preservative: 0.09% Sodium azide Constituents: 0.1% BSA, Tris buffered saline
精製度	Immunogen affinity purified
特記事項 (精製)	ab72492 was affinity purified using an epitope specific to PAPOLA immobilized on solid support.
ポリ/モノ	ポリクローナル

アイソタイプIgG

アプリケーション

**The Abpromise guarantee**      Abpromise保証は、次のテスト済みアプリケーションにおけるab72492の使用に適用されます  
アプリケーションノートには、推奨の開始希釈率がありますが、適切な希釈率につきましてはご検討ください。

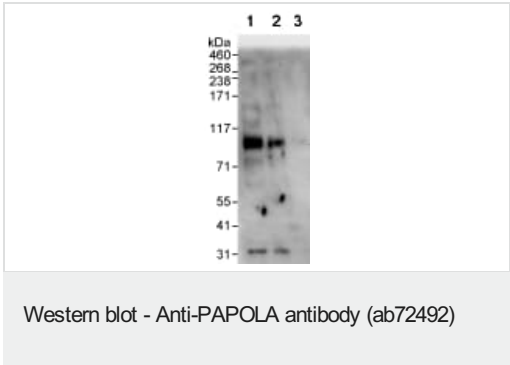
アプリケーション	Abreviews	特記事項
WB		1/2000 - 1/10000. Detects a band of approximately 83 kDa (predicted molecular weight: 83 kDa).

追加情報Is unsuitable for IP.

ターゲット情報

機能	Polymerase that creates the 3'-poly(A) tail of mRNA's. Also required for the endoribonucleolytic cleavage reaction at some polyadenylation sites. May acquire specificity through interaction with a cleavage and polyadenylation specificity factor (CPSF) at its C-terminus.
配列類似性	Belongs to the poly(A) polymerase family.
翻訳後修飾	Polysumoylated. Varying sumoylation depending on tissue- and cell-type. Highly sumoylated in bladder and NIH 3T3 cells. Sumoylation is required for nuclear localization and enhances PAP stability. Desumoylated by SENP1. Inhibits polymerase activity. Hyperphosphorylation on multiple CDK2 consensus and non-consensus sites in the C-terminal Ser/Thr-rich region represses PAP activity in late M-phase. Phosphorylation/dephosphorylation may regulate the interaction between PAP and CPSF. Acetylated in the C-terminus. Acetylation decreases interaction with NUDT21 and KPNB1, and inhibits nuclear localization through inhibiting binding to the importin alpha/beta complex.
細胞内局在	Cytoplasm. Nucleus. The 90 kDa form is nuclear while the 100 kDa and the 106 kDa forms are both nuclear and cytoplasmic.

画像



**All lanes :** Anti-PAPOLA antibody (ab72492) at 0.04 µg/ml

**Lane 1 :** HeLa whole cell lysate at 50 µg

**Lane 2 :** HeLa whole cell lysate at 15 µg

**Lane 3 :** HeLa whole cell lysate at 5 µg

**Predicted band size:** 83 kDa

**Observed band size:** 83 kDa

**Exposure time:** 3 minutes

**Please note:** All products are "FOR RESEARCH USE ONLY. NOT FOR USE IN DIAGNOSTIC PROCEDURES"

### **Our Abpromise to you: Quality guaranteed and expert technical support**

---

- Replacement or refund for products not performing as stated on the datasheet
- Valid for 12 months from date of delivery
- Response to your inquiry within 24 hours
  
- We provide support in Chinese, English, French, German, Japanese and Spanish
- Extensive multi-media technical resources to help you
- We investigate all quality concerns to ensure our products perform to the highest standards

If the product does not perform as described on this datasheet, we will offer a refund or replacement. For full details of the Abpromise, please visit <https://www.abcam.co.jp/abpromise> or contact our technical team.

### **Terms and conditions**

---

- Guarantee only valid for products bought direct from Abcam or one of our authorized distributors