


Anti-Papillary renal cell carcinoma antibody ab86602

画像数 2

製品の概要

製品名	Anti-Papillary renal cell carcinoma antibody
製品の詳細	Rabbit polyclonal to Papillary renal cell carcinoma
由来種	Rabbit
アプリケーション	適用あり: WB, IP
種交差性	<p>交差種: Mouse, Human</p> <p>交差が予測される動物種: Rat, Rabbit, Horse, Guinea pig, Cow, Dog, Pig, Chimpanzee, Rhesus monkey, Gorilla, Orangutan </p>
免疫原	Synthetic peptide, corresponding to a region between residues 425 and 475 of human Papillary renal cell carcinoma (NP_005964.3)
ポジティブ・コントロール	HeLa, 293T and NIH3T3 whole cell lysates.
特記事項	<p>The Life Science industry has been in the grips of a reproducibility crisis for a number of years. Abcam is leading the way in addressing this with our range of recombinant monoclonal antibodies and knockout edited cell lines for gold-standard validation. Please check that this product meets your needs before purchasing.</p> <p>If you have any questions, special requirements or concerns, please send us an inquiry and/or contact our Support team ahead of purchase. Recommended alternatives for this product can be found below, along with publications, customer reviews and Q&As</p>

製品の特性

製品の状態	Liquid
保存方法	Shipped at 4°C. Upon delivery aliquot and store at -20°C. Avoid freeze / thaw cycles.
バッファー	<p>pH: 7</p> <p>Preservative: 0.09% Sodium azide</p> <p>Constituent: Tris citrate/phosphate</p>
精製度	Immunogen affinity purified
ポリ/モノ	ポリクローナル
アイソタイプ	IgG

アプリケーション

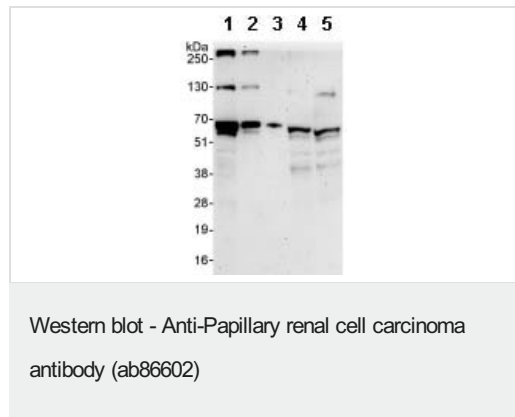
The Abpromise guarantee **Abpromise保証は、** 次のテスト済みアプリケーションにおけるab86602の使用に適用されます
 アプリケーションノートには、推奨の開始希釈率がありますが、適切な希釈率につきましてはご検討ください。

アプリケーション	Abreviews	特記事項
WB		1/2000 - 1/10000. Detects a band of approximately 52 kDa (predicted molecular weight: 52 kDa).
IP		Use at 2-5 µg/mg of lysate.

ターゲット情報

機能	May regulate cell cycle progression through interaction with MAD2L2.
組織特異性	Ubiquitous in fetal and adult tissues.
関連疾患	Note=A chromosomal aberration involving PRCC is found in patients with papillary renal cell carcinoma. Translocation t(X;1)(p11.2;q21.2) with TFE3.
細胞内局在	Nucleus.

画像

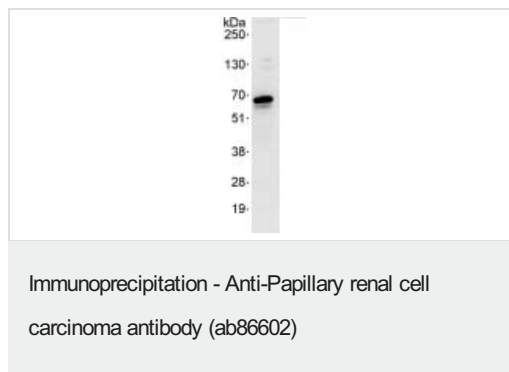


All lanes : Anti-Papillary renal cell carcinoma antibody (ab86602) at 0.1 µg/ml

- Lane 1 :** HeLa whole cell lysate at 50 µg
- Lane 2 :** HeLa whole cell lysate at 15 µg
- Lane 3 :** HeLa whole cell lysate at 5 µg
- Lane 4 :** 293T whole cell lysate at 50 µg
- Lane 5 :** NIH3T3 whole cell lysate at 50 µg

Predicted band size: 52 kDa
Observed band size: 52 kDa

Exposure time: 3 minutes



Detection of Papillary renal cell carcinoma by Western Blot of Immunoprecipitate.

ab86602 at 0.4µg/ml staining Papillary renal cell carcinoma in HeLa whole cell lysate immunoprecipitated using ab86602 at 3µg/mg lysate (1 mg/IP; 20% of IP loaded/lane).

Detection: Chemiluminescence with exposure time of 10 seconds.

Please note: All products are "FOR RESEARCH USE ONLY. NOT FOR USE IN DIAGNOSTIC PROCEDURES"

Our Abpromise to you: Quality guaranteed and expert technical support

- Replacement or refund for products not performing as stated on the datasheet
- Valid for 12 months from date of delivery
- Response to your inquiry within 24 hours
- We provide support in Chinese, English, French, German, Japanese and Spanish
- Extensive multi-media technical resources to help you
- We investigate all quality concerns to ensure our products perform to the highest standards

If the product does not perform as described on this datasheet, we will offer a refund or replacement. For full details of the Abpromise, please visit <https://www.abcam.co.jp/abpromise> or contact our technical team.

Terms and conditions

- Guarantee only valid for products bought direct from Abcam or one of our authorized distributors