

Anti-PANDER antibody ab103154

1 [References](#) [画像数](#) **2**

製品の概要

製品名	Anti-PANDER antibody
製品の詳細	Rabbit polyclonal to PANDER
由来種	Rabbit
アプリケーション	適用あり: WB
種交差性	交差種: Mouse, Human
免疫原	Full length native protein (purified) corresponding to Human PANDER aa 1-235. Database link: NP_478066.3
ポジティブ・コントロール	Mouse intestine lysate; PANDER transfected 293T cell line lysate
特記事項	<p>The Life Science industry has been in the grips of a reproducibility crisis for a number of years. Abcam is leading the way in addressing this with our range of recombinant monoclonal antibodies and knockout edited cell lines for gold-standard validation. Please check that this product meets your needs before purchasing.</p> <p>If you have any questions, special requirements or concerns, please send us an inquiry and/or contact our Support team ahead of purchase. Recommended alternatives for this product can be found below, along with publications, customer reviews and Q&As</p>

製品の特性

製品の状態	Liquid
保存方法	Shipped at 4°C. Upon delivery aliquot. Store at -20°C or -80°C. Avoid freeze / thaw cycle.
バッファー	pH: 7.40 Constituent: 100% PBS
精製度	Protein A purified
ポリ/モノ	ポリクローナル
アイソタイプ	IgG

アプリケーション

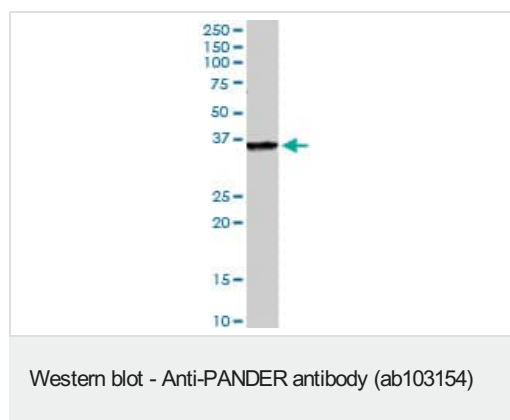
The Abpromise guarantee **Abpromise保証は、**次のテスト済みアプリケーションにおけるab103154の使用に適用されます
アプリケーションノートには、推奨の開始希釈率がありますが、適切な希釈率につきましてはご検討ください。

アプリケーション	Abreviews	特記事項
WB		1/500 - 1/1000. Predicted molecular weight: 26 kDa.

ターゲット情報

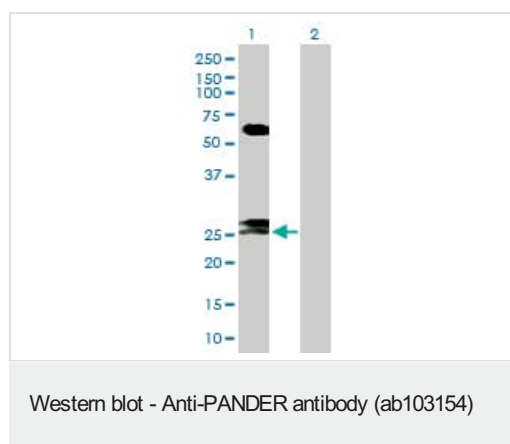
機能	Induces apoptosis of alpha and beta cells in a dose- and time-dependent manner. Present in insulin secretory granules and likely cosecreted with insulin.
組織特異性	Highly expressed in the pancreas. Also found in the colon, kidney, prostate, small intestine and testis.
配列類似性	Belongs to the FAM3 family.
翻訳後修飾	2 N-termini have been observed in the mature protein: the first at Glu-30, resulting from signal peptide cleavage, the second at Ser-46.
細胞内局在	Secreted. Localized in discrete vesicular and perinuclear structure.

画像



Anti-PANDER antibody (ab103154) at 1/500 dilution + Mouse intestine lysate at 50 µg

Predicted band size: 26 kDa



All lanes : Anti-PANDER antibody (ab103154) at 1/500 dilution

Lane 1 : PANDER transfected 293T cell line lysate

Lane 2 : Non-transfected 293T cell line lysate

Lysates/proteins at 25 µg per lane.

Predicted band size: 26 kDa

Please note: All products are "FOR RESEARCH USE ONLY. NOT FOR USE IN DIAGNOSTIC PROCEDURES"

Our Abpromise to you: Quality guaranteed and expert technical support

-
- Replacement or refund for products not performing as stated on the datasheet
 - Valid for 12 months from date of delivery
 - Response to your inquiry within 24 hours

 - We provide support in Chinese, English, French, German, Japanese and Spanish
 - Extensive multi-media technical resources to help you
 - We investigate all quality concerns to ensure our products perform to the highest standards

If the product does not perform as described on this datasheet, we will offer a refund or replacement. For full details of the Abpromise, please visit <https://www.abcam.co.jp/abpromise> or contact our technical team.

Terms and conditions

- Guarantee only valid for products bought direct from Abcam or one of our authorized distributors