


Anti-pan Sodium Channel antibody ab53724

[1 References](#) [画像数 1](#)

製品の概要

製品名	Anti-pan Sodium Channel antibody
製品の詳細	Rabbit polyclonal to pan Sodium Channel
由来種	Rabbit
特異性	Detects endogenous levels of total sodium channel protein.
アプリケーション	適用あり: WB
種交差性	交差種: Human 交差が予測される動物種: Mouse, Rat 
免疫原	Synthetic peptide corresponding to Human pan Sodium Channel.
ポジティブ・コントロール	Extracts from HuvEc cells.
特記事項	<p>The Life Science industry has been in the grips of a reproducibility crisis for a number of years. Abcam is leading the way in addressing this with our range of recombinant monoclonal antibodies and knockout edited cell lines for gold-standard validation. Please check that this product meets your needs before purchasing.</p> <p>If you have any questions, special requirements or concerns, please send us an inquiry and/or contact our Support team ahead of purchase. Recommended alternatives for this product can be found below, along with publications, customer reviews and Q&As</p>

製品の特性

製品の状態	Liquid
保存方法	Shipped at 4°C. Upon delivery aliquot and store at -20°C. Avoid freeze / thaw cycles.
バッファー	pH: 7.40 Preservative: 0.02% Sodium azide Constituents: 50% Glycerol (glycerin, glycerine), 0.87% Sodium chloride, PBS
精製度	Without Mg+2 and Ca+2 Immunogen affinity purified
ポリモノ	ポリクローナル
アイソタイプ	IgG

アプリケーション

The Abpromise guarantee **Abpromise保証は、次のテスト済みアプリケーションにおけるab53724の使用に適用されます**
アプリケーションノートには、推奨の開始希釈率がありますが、適切な希釈率につきましてはご検討ください。

アプリケーション	Abreviews	特記事項
WB		1/500 - 1/1000. Detects a band of approximately 227 kDa (predicted molecular weight: 227 kDa).

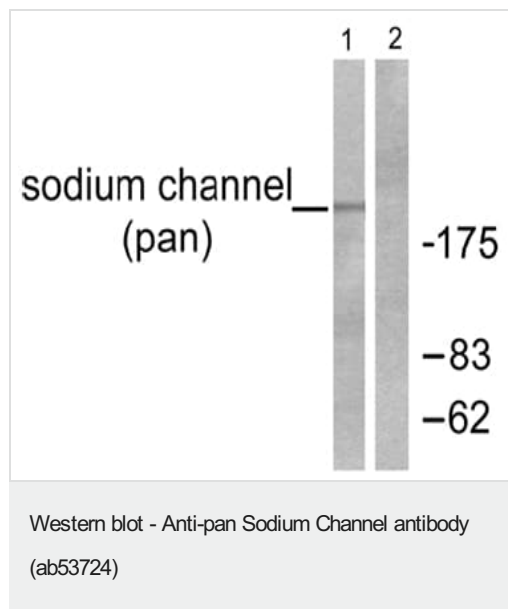
ターゲット情報

関連性

The pan sodium ion channel, SCN5A, is a cardiac sodium channel distinct from those in nerve and muscle. It is a tetrodotoxin-resistant Na(+) channel isoform. SCN5A mediates the voltage-dependent sodium ion permeability of excitable membranes by opening or closing in response to the voltage difference across the membrane. Na(+) ions pass in accordance with their electrochemical gradient. This channel is responsible for the initial upstroke of the action potential in the electrocardiogram. Defects in SCN5A are involved in many diseases including: progressive familial heart block type I (PFHBI), also known as Lenegre-Lev disease or progressive cardiac conduction defect (PCCD); long QT syndrome type 3 (LQT3); Brugada syndrome; sick sinus syndrome 1 (SSS1); idiopathic ventricular fibrillation (IVF), also called paroxysmal familial ventricular fibrillation; sudden infant death syndrome (SIDS); familial atrial standstill and dilated cardiomyopathy 1E (CMD1E).

細胞内局在 Cell Membrane; Multi-pass membrane protein.

画像



All lanes : Anti-pan Sodium Channel antibody (ab53724) at 1/500 dilution

Lane 1 : extracts from HuvEc cells

Lane 2 : extracts from HuvEc cells with immunizing peptide

Predicted band size: 227 kDa

Observed band size: 227 kDa

Please note: All products are "FOR RESEARCH USE ONLY. NOT FOR USE IN DIAGNOSTIC PROCEDURES"

Our Abpromise to you: Quality guaranteed and expert technical support

-
- Replacement or refund for products not performing as stated on the datasheet
 - Valid for 12 months from date of delivery
 - Response to your inquiry within 24 hours

 - We provide support in Chinese, English, French, German, Japanese and Spanish
 - Extensive multi-media technical resources to help you
 - We investigate all quality concerns to ensure our products perform to the highest standards

If the product does not perform as described on this datasheet, we will offer a refund or replacement. For full details of the Abpromise, please visit <https://www.abcam.co.jp/abpromise> or contact our technical team.

Terms and conditions

- Guarantee only valid for products bought direct from Abcam or one of our authorized distributors