


# Anti-PAK6 antibody ab41431

画像数 1

### 製品の概要

製品名	Anti-PAK6 antibody
製品の詳細	Rabbit polyclonal to PAK6
由来種	Rabbit
特異性	The antibody detects a 75 kDa band on SDS-PAGE immunoblots of human PAK6 recombinant protein. This reactivity is specifically blocked by pre-incubation with PAK6 N-terminal peptide (immunogen) and is not affected by lambda phosphatase treatment.
アプリケーション	<b>適用あり:</b> WB
種交差性	<b>交差種:</b> Human <b>交差が予測される動物種:</b> Mouse, Rat 
免疫原	A synthetic peptide (coupled to carrier protein) corresponding to amino acids in the N-terminal region of human PAK6. The sequence used has two amino acid differences compared to rat and mouse PAK6.
特記事項	Do not aliquot.  The Life Science industry has been in the grips of a reproducibility crisis for a number of years. Abcam is leading the way in addressing this with our range of recombinant monoclonal antibodies and knockout edited cell lines for gold-standard validation. Please check that this product meets your needs before purchasing.  If you have any questions, special requirements or concerns, please send us an inquiry and/or contact our Support team ahead of purchase. Recommended alternatives for this product can be found below, along with publications, customer reviews and Q&As

### 製品の特性

製品の状態	Liquid
保存方法	Shipped at 4°C. Store at 4°C (up to 6 months). Store at -20°C.
バッファー	Preservative: 0.05% Sodium azide Constituents: PBS, 50% Glycerol, 0.1% BSA
精製度	Immunogen affinity purified
ポリ/モノ	ポリクローナル
アイソタイプ	IgG

## アプリケーション

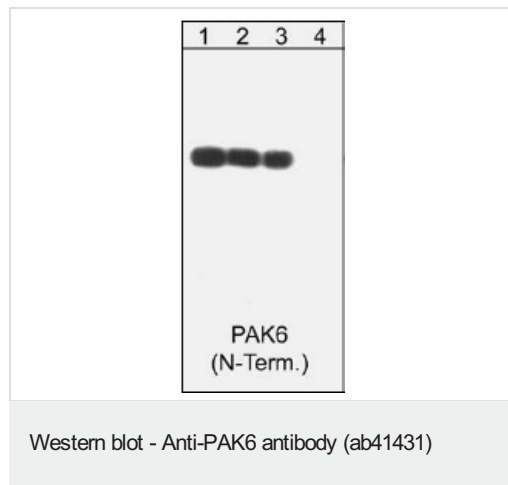
**The Abpromise guarantee**      Abpromise保証は、 次のテスト済みアプリケーションにおけるab41431の使用に適用されます  
アプリケーションノートには、推奨の開始希釈率がありますが、適切な希釈率につきましてはご検討ください。

アプリケーション	Abreviews	特記事項
WB		1/1000. Detects a band of approximately 75 kDa (predicted molecular weight: 75 kDa).

## ターゲット情報

機能	The activated kinase acts on a variety of targets.
配列類似性	Belongs to the protein kinase superfamily. STE Ser/Thr protein kinase family. STE20 subfamily. Contains 1 CRIB domain. Contains 1 protein kinase domain.
翻訳後修飾	Autophosphorylated when activated by CDC42/p21.

## 画像



**All lanes :** Anti-PAK6 antibody (ab41431) at 1/1000 dilution

**Lane 1 :** Human PAK6 recombinant protein phosphorylated by ERK2

**Lane 2 :** Human PAK6 recombinant protein phosphorylated by ERK2; blot exposed to lambda phosphatase before probing

**Lane 3 :** Human PAK6 recombinant protein phosphorylated by ERK2 with non-specific peptide

**Lane 4 :** Human PAK6 recombinant protein phosphorylated by ERK2 with PAK6 N-terminal peptide (ab41431 immunogen)

**Predicted band size:** 75 kDa

**Observed band size:** 75 kDa

Membrane was incubated with diluted antibody in 5% non-fat milk, PBS, 0.04% Tween20 for 1 hour at room temperature.

**Please note:** All products are "FOR RESEARCH USE ONLY. NOT FOR USE IN DIAGNOSTIC PROCEDURES"

**Our Abpromise to you: Quality guaranteed and expert technical support**

- Replacement or refund for products not performing as stated on the datasheet
- Valid for 12 months from date of delivery
- Response to your inquiry within 24 hours
- We provide support in Chinese, English, French, German, Japanese and Spanish
- Extensive multi-media technical resources to help you
- We investigate all quality concerns to ensure our products perform to the highest standards

If the product does not perform as described on this datasheet, we will offer a refund or replacement. For full details of the Abpromise, please visit <https://www.abcam.co.jp/abpromise> or contact our technical team.

#### **Terms and conditions**

---

- Guarantee only valid for products bought direct from Abcam or one of our authorized distributors