


# Anti-PAK1 (phospho T423) + PAK2 (phospho T402 ) + PAK3 (phospho T436) antibody ab62155

画像数 1

### 製品の概要

製品名	Anti-PAK1 (phospho T423) + PAK2 (phospho T402 ) + PAK3 (phospho T436) antibody
製品の詳細	Rabbit polyclonal to PAK1 (phospho T423) + PAK2 (phospho T402) + PAK3 (phospho T436)
由来種	Rabbit
特異性	Detects endogenous levels of PAK1, PAK2 and PAK3 only when phosphorylated at threonine 423, threonine 402 and threonine 421 respectively (Human: Thr423/402/421; Mouse: Thr423/402/421; Rat: Thr422/402/421).
アプリケーション	適用あり: IHC-P
種交差性	交差種: Human 交差が予測される動物種: Rat 
免疫原	Synthetic peptide within Human PAK1 aa 350-450 (phospho T423). The exact immunogen sequence used to generate this antibody is proprietary information. If additional detail on the immunogen is needed to determine the suitability of the antibody for your needs, please <b><a href="#">contact</a></b> our Scientific Support team to discuss your requirements. Database link: <a href="#">Q13153</a>

 [Run BLAST with](#)

 [Run BLAST with](#)

### 特記事項

The Life Science industry has been in the grips of a reproducibility crisis for a number of years. Abcam is leading the way in addressing this with our range of recombinant monoclonal antibodies and knockout edited cell lines for gold-standard validation. Please check that this product meets your needs before purchasing.

If you have any questions, special requirements or concerns, please send us an inquiry and/or contact our Support team ahead of purchase. Recommended alternatives for this product can be found below, along with publications, customer reviews and Q&As

### 製品の特性

製品の状態	Liquid
保存方法	Shipped at 4°C. Store at -20°C. Stable for 12 months at -20°C.
バッファー	pH: 7.40 Preservative: 0.02% Sodium azide Constituents: PBS, 50% Glycerol (glycerin, glycerine), 0.87% Sodium chloride

精製度	Immunogen affinity purified
特記事項(精製)	Purified from rabbit antiserum by affinity chromatography using epitope specific phosphopeptide. The antibody against non-phosphopeptide was removed by chromatography using non-phosphopeptide corresponding to the phosphorylation site.
ポリ/モノ	ポリクローナル
アイソタイプ	IgG

## アプリケーション

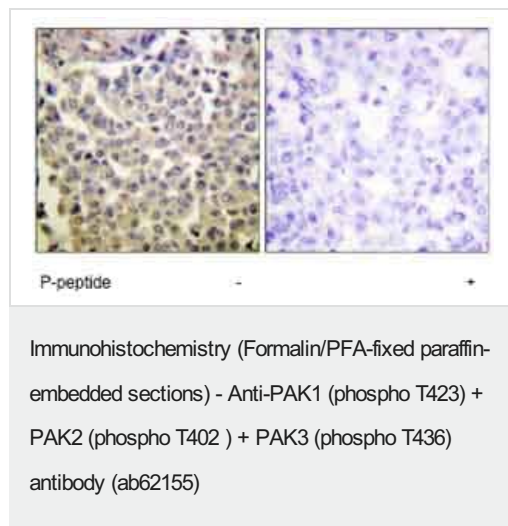
**The Abpromise guarantee**      **Abpromise保証は、次のテスト済みアプリケーションにおけるab62155の使用に適用されず**  
 アプリケーションノートには、推奨の開始希釈率がありますが、適切な希釈率につきましてはご検討ください。

アプリケーション	Abreviews	特記事項
IHC-P		1/50 - 1/100.

## ターゲット情報

**細胞内局在**  
 PAK1: Cytoplasm. Cell junction > focal adhesion. Recruited to focal adhesions upon activation.  
 PAK2: Cytoplasm and Nucleus. Cytoplasm > perinuclear region. Membrane. Interaction with ARHGAP10 probably changes PAK-2p34 location to cytoplasmic perinuclear region.  
 Myristoylation changes PAK-2p34 location to the membrane. PAK3: Cytoplasmic

## 画像



Immunohistochemistry analysis of paraffin-embedded human breast carcinoma tissue using PAK1 (phospho T423) + PAK2 (phospho T402) + PAK3 (phospho T436) antibody (ab62155) at 1/50 - 1/100 dilution, in the presence (right panel) and absence (left panel) of immunising phosphopeptide.

**Please note:** All products are "FOR RESEARCH USE ONLY. NOT FOR USE IN DIAGNOSTIC PROCEDURES"

## Our Abpromise to you: Quality guaranteed and expert technical support

- Replacement or refund for products not performing as stated on the datasheet

- Valid for 12 months from date of delivery
- Response to your inquiry within 24 hours
  
- We provide support in Chinese, English, French, German, Japanese and Spanish
- Extensive multi-media technical resources to help you
- We investigate all quality concerns to ensure our products perform to the highest standards

If the product does not perform as described on this datasheet, we will offer a refund or replacement. For full details of the Abpromise, please visit <https://www.abcam.co.jp/abpromise> or contact our technical team.

### **Terms and conditions**

---

- Guarantee only valid for products bought direct from Abcam or one of our authorized distributors