

Anti-PAK1 (phospho T212) antibody ab75599

★★★★★ [1 Abreviews](#) [12 References](#) [画像数 3](#)

製品の概要

製品名	Anti-PAK1 (phospho T212) antibody
製品の詳細	Rabbit polyclonal to PAK1 (phospho T212)
由来種	Rabbit
アプリケーション	適用あり: ICC/IF, WB, IHC-P
種交差性	交差種: Human
免疫原	Synthetic peptide corresponding to Human PAK1 (phospho T212). Run BLAST with ExPASy Run BLAST with NCBI
ポジティブ・コントロール	Extracts from 293 cells treated with forskolin (40μM, 30min). Human breast carcinoma tissue.
特記事項	<p>The Life Science industry has been in the grips of a reproducibility crisis for a number of years. Abcam is leading the way in addressing this with our range of recombinant monoclonal antibodies and knockout edited cell lines for gold-standard validation. Please check that this product meets your needs before purchasing.</p> <p>If you have any questions, special requirements or concerns, please send us an inquiry and/or contact our Support team ahead of purchase. Recommended alternatives for this product can be found below, along with publications, customer reviews and Q&As</p>

製品の特性

製品の状態	Liquid
保存方法	Shipped at 4°C. Store at -20°C. Stable for 12 months at -20°C.
バッファー	<p>pH: 7.40</p> <p>Preservative: 0.02% Sodium azide</p> <p>Constituents: 50% Glycerol (glycerin, glycerine), 0.87% Sodium chloride, PBS</p> <p>Without Mg²⁺ and Ca²⁺</p>
精製度	Immunogen affinity purified
特記事項 (精製)	ab75599 was affinity-purified from rabbit antiserum by affinity-chromatography using epitope-specific phosphopeptide. The antibody against the non-phosphopeptide was removed by chromatography using a non-phosphopeptide corresponding to the phosphorylation site.
ポリ/モノ	ポリクローナル
アイソタイプ	IgG

アプリケーション

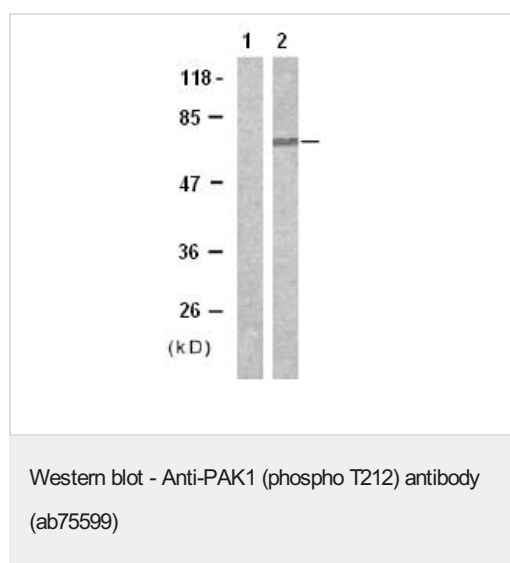
The Abpromise guarantee **Abpromise保証は、次のテスト済みアプリケーションにおけるab75599の使用に適用されます**
アプリケーションノートには、推奨の開始希釈率がありますが、適切な希釈率につきましてはご確認ください。

アプリケーション	Abreviews	特記事項
ICC/IF		1/100 - 1/200.
WB	★★★★★ (1)	1/500 - 1/1000. Predicted molecular weight: 61 kDa.
IHC-P		1/50 - 1/100.

ターゲット情報

機能	The activated kinase acts on a variety of targets. Likely to be the GTPase effector that links the Rho-related GTPases to the JNK MAP kinase pathway. Activated by CDC42 and RAC1. Involved in dissolution of stress fibers and reorganization of focal complexes. Involved in regulation of microtubule biogenesis through phosphorylation of TBCB. Activity is inhibited in cells undergoing apoptosis, potentially due to binding of CDC2L1 and CDC2L2.
配列類似性	Belongs to the protein kinase superfamily. STE Ser/Thr protein kinase family. STE20 subfamily. Contains 1 CRIB domain. Contains 1 protein kinase domain.
翻訳後修飾	Autophosphorylated when activated by CDC42/p21 and RAC1.
細胞内局在	Cytoplasm. Cell junction > focal adhesion. Recruited to focal adhesions upon activation.

画像



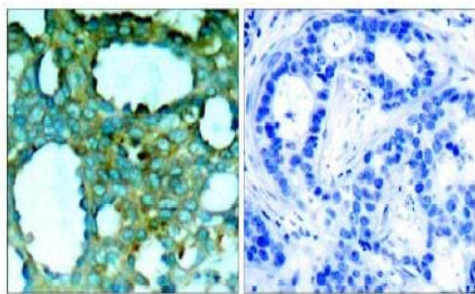
All lanes : Anti-PAK1 (phospho T212) antibody (ab75599) at 1/500 dilution

Lane 1 : Extracts from 293 cells (untreated)

Lane 2 : Extracts from 293 cells treated with forskolin (40μM, 30min),

Predicted band size: 61 kDa

Observed band size: 65 kDa



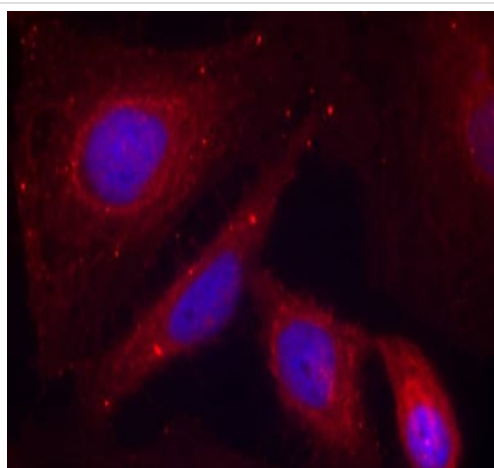
P-Peptide

-

+

Immunohistochemistry (Formalin/PFA-fixed paraffin-embedded sections) - Anti-PAK1 (phospho T212) antibody (ab75599)

Immunohistochemical analysis of paraffin-embedded human breast carcinoma tissue using ab75599, at 1/50 dilution, in the absence (left panel) and presence (right panel) of the immunising phosphopeptide.



Immunocytochemistry/ Immunofluorescence - Anti-PAK1 (phospho T212) antibody (ab75599)

ab75599 at 1/100 dilution staining PAK1 (phospho T212) in Hela cells by ICC/IF (MeOH fixation).

Please note: All products are "FOR RESEARCH USE ONLY. NOT FOR USE IN DIAGNOSTIC PROCEDURES"

Our Abpromise to you: Quality guaranteed and expert technical support

- Replacement or refund for products not performing as stated on the datasheet
- Valid for 12 months from date of delivery
- Response to your inquiry within 24 hours
- We provide support in Chinese, English, French, German, Japanese and Spanish
- Extensive multi-media technical resources to help you
- We investigate all quality concerns to ensure our products perform to the highest standards

If the product does not perform as described on this datasheet, we will offer a refund or replacement. For full details of the Abpromise, please visit <https://www.abcam.co.jp/abpromise> or contact our technical team.

Terms and conditions

- Guarantee only valid for products bought direct from Abcam or one of our authorized distributors