


# Anti-PAK1 + PAK2 + PAK3 (phospho S141) antibody ab5247

**2 References**   [画像数 1](#)

### 製品の概要

製品名	Anti-PAK1 + PAK2 + PAK3 (phospho S141) antibody
製品の詳細	Rabbit polyclonal to PAK1 + PAK2 + PAK3 (phospho S141)
由来種	Rabbit
アプリケーション	<b>適用あり:</b> WB
種交差性	<b>交差種:</b> Human <b>交差が予測される動物種:</b> Rat, Rabbit 
免疫原	Synthetic peptide corresponding to Human PAK1 + PAK2 + PAK3 (phospho S141).
ポジティブ・コントロール	SH-SY5Y, SH-SY5Y treated with 100 uM Pervanadate, HeLa, HeLa treated with 100 uM Pervanadate, K562, K562 treated with 100 uM Pervanadate
特記事項	<p>P21-activated kinase (PAK) is actually a family of serine/threonine protein kinases, members of which are activated by small molecular weight GTPases. The three most common isoforms are PAK 1, PAK 2, and PAK 3 (also known as alpha PAK, gamma PAK, and beta PAK, respectively). These kinases contain numerous regulatory elements that trigger diverse signaling processes such as those initiated by activated GTPases, interaction with Src homology 3 (SH3) domains, and caspase mediated proteolytic cleavage. Autophosphorylation of serine 141 (serine 144 for PAK 1 and serine 139 PAK 3), catalyzed by Cdc42, is required for activation of PAK.</p> <p>The Life Science industry has been in the grips of a reproducibility crisis for a number of years. Abcam is leading the way in addressing this with our range of recombinant monoclonal antibodies and knockout edited cell lines for gold-standard validation. Please check that this product meets your needs before purchasing.</p> <p>If you have any questions, special requirements or concerns, please send us an inquiry and/or contact our Support team ahead of purchase. Recommended alternatives for this product can be found below, along with publications, customer reviews and Q&amp;As</p>

### 製品の特性

製品の状態	Liquid
保存方法	Shipped at 4°C. Upon delivery aliquot and store at -20°C or -80°C. Avoid repeated freeze / thaw cycles.
バッファー	pH: 7.30

Preservative: 0.05% Sodium azide  
Constituents: PBS, 0.1% BSA

BSA is IgG and protease free

#### 精製度

Immunogen affinity purified

#### 特記事項 (精製)

Purified from rabbit serum by sequential epitope-specific chromatography. The antibody has been negatively preadsorbed using a non-phosphopeptide corresponding to the site of phosphorylation to remove antibody that is reactive with non-phosphorylated PAK. The final product is generated by affinity chromatography using a PAK 2 derived peptide that is phosphorylated at serine 141.

#### 一次抗体 備考

P21-activated kinase (PAK) is actually a family of serine/threonine protein kinases, members of which are activated by small molecular weight GTPases. The three most common isoforms are PAK 1, PAK 2, and PAK 3 (also known as alpha PAK, gamma PAK, and beta PAK, respectively). These kinases contain numerous regulatory elements that trigger diverse signaling processes such as those initiated by activated GTPases, interaction with Src homology 3 (SH3) domains, and caspase mediated proteolytic cleavage. Autophosphorylation of serine 141 (serine 144 for PAK 1 and serine 139 PAK 3), catalyzed by Cdc42, is required for activation of PAK.

#### ポリ/モノ

ポリクローナル

#### アイソタイプ

IgG

#### アプリケーション

##### The Abpromise guarantee

**Abpromise保証は、次のテスト済みアプリケーションにおけるab5247の使用に適用されます**

アプリケーションノートには、推奨の開始希釈率がありますが、適切な希釈率につきましてはご検討ください。

アプリケーション	Abreviews	特記事項
WB		1/1000. Predicted molecular weight: 65 kDa.

#### ターゲット情報

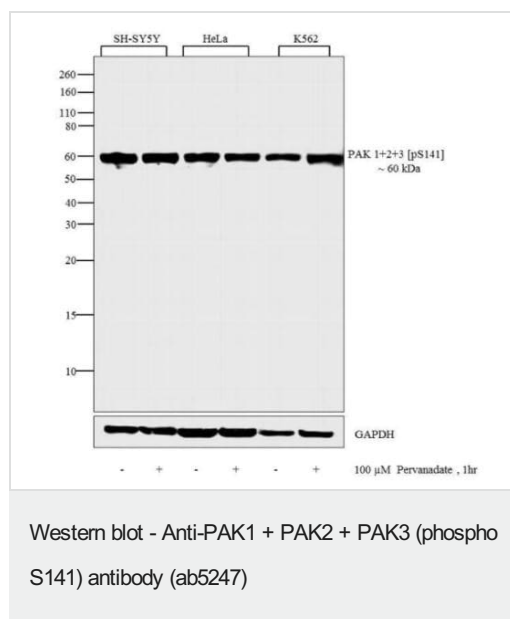
##### 関連性

In mammals, there are several identified isoforms of p21 Activated Protein Kinases or PAKs: PAK1 and PAK3 are mostly brain specific, while PAK2 is expressed ubiquitously. Mutations of the gene coding for PAK3 are associated with X linked mental retardation and PAK3 is a key regulator of synapse formation and plasticity in the hippocampus. PAK3 is thought to play a key role in regulation of cell shape and motility as well as cell death.

##### 細胞内局在

Cytoplasm. Recruited to focal adhesions upon activation

#### 画像



**All lanes :** Anti-PAK1 + PAK2 + PAK3 (phospho S141) antibody (ab5247) at 1/500 dilution

**Lane 1 :** SH-SY5Y whole cell extracts

**Lane 2 :** SH-SY5Y treated with 100  $\mu$ M Pervanadate for 1 h

**Lane 3 :** HeLa whole cell extract

**Lane 4 :** HeLa treated with 100  $\mu$ M Pervanadate for 1 h

**Lane 5 :** K562 whole cell extract

**Lane 6 :** K562 treated with 100  $\mu$ M Pervanadate for 1 h

Lysates/proteins at 30  $\mu$ g per lane.

### Secondary

**All lanes :** Goat anti-Rabbit IgG (H+L) Secondary Antibody, HRP conjugate at 1/5000 dilution

**Predicted band size:** 65 kDa

**Please note:** All products are "FOR RESEARCH USE ONLY. NOT FOR USE IN DIAGNOSTIC PROCEDURES"

### Our Abpromise to you: Quality guaranteed and expert technical support

- Replacement or refund for products not performing as stated on the datasheet
- Valid for 12 months from date of delivery
- Response to your inquiry within 24 hours
- We provide support in Chinese, English, French, German, Japanese and Spanish
- Extensive multi-media technical resources to help you
- We investigate all quality concerns to ensure our products perform to the highest standards

If the product does not perform as described on this datasheet, we will offer a refund or replacement. For full details of the Abpromise, please visit <https://www.abcam.co.jp/abpromise> or contact our technical team.

### Terms and conditions

- Guarantee only valid for products bought direct from Abcam or one of our authorized distributors