




Anti-PAI1 antibody ab31280

★★★★★ [4 Abreviews](#) [8 References](#) [画像数 4](#)

製品の概要

製品名	Anti-PAI1 antibody
製品の詳細	Goat polyclonal to PAI1
由来種	Goat
特異性	This antibody is expected to recognise both reported isoforms.
アプリケーション	適用あり: WB, IHC-P
種交差性	交差種: Human 交差が予測される動物種: Dog, Chimpanzee 
免疫原	Synthetic peptide corresponding to Human PAI1 aa 50-150 (internal sequence). Database link: NP_000593.1  Run BLAST with  Run BLAST with
ポジティブ・コントロール	IHC-P: Human placenta tissue. WB: Human liver tissue, A549, HepG2, and HeLa cell lysates.
特記事項	<p>The Life Science industry has been in the grips of a reproducibility crisis for a number of years. Abcam is leading the way in addressing this with our range of recombinant monoclonal antibodies and knockout edited cell lines for gold-standard validation. Please check that this product meets your needs before purchasing.</p> <p>If you have any questions, special requirements or concerns, please send us an inquiry and/or contact our Support team ahead of purchase. Recommended alternatives for this product can be found below, along with publications, customer reviews and Q&As</p>

製品の特性

製品の状態	Liquid
保存方法	Shipped at 4°C. Upon delivery aliquot and store at -20°C. Avoid freeze / thaw cycles.
バッファー	pH: 7.30 Preservative: 0.02% Sodium azide Constituents: 99% Tris buffered saline, 0.5% BSA
精製度	Immunogen affinity purified
特記事項 (精製)	Purified from goat serum by ammonium sulphate precipitation followed by antigen affinity chromatography using the immunizing peptide.
ポリ/モノ	ポリクローナル

アプリケーション

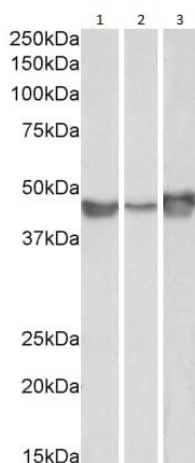
The Abpromise guarantee Abpromise保証は、 次のテスト済みアプリケーションにおけるab31280の使用に適用されます
アプリケーションノートには、推奨の開始希釈率がありますが、適切な希釈率につきましてはご検討ください。

アプリケーション	Abreviews	特記事項
WB	★★★★★ (3)	Use a concentration of 0.1 - 0.3 µg/ml. Detects a band of approximately 45 kDa (predicted molecular weight: 45 kDa). 1 hour primary incubation is recommended for this product.
IHC-P	★★★★★ (1)	Use a concentration of 4 - 6 µg/ml.

ターゲット情報

機能	This inhibitor acts as 'bait' for tissue plasminogen activator, urokinase, and protein C. Its rapid interaction with TPA may function as a major control point in the regulation of fibrinolysis.
組織特異性	Found in plasma and platelets and in endothelial, hepatoma and fibrosarcoma cells.
関連疾患	Defects in SERPINE1 are the cause of plasminogen activator inhibitor-1 deficiency (PAI-1D) [MIM:613329]. It is a hematologic disorder characterized by increased bleeding after trauma, injury, or surgery. Affected females have menorrhagia. The bleeding defect is due to increased fibrinolysis of fibrin blood clots due to deficiency of plasminogen activator inhibitor-1, which inhibits tissue and urinary activators of plasminogen. Note=High concentrations of SERPINE1 seem to contribute to the development of venous but not arterial occlusions.
配列類似性	Belongs to the serpin family.
翻訳後修飾	Inactivated by proteolytic attack of the urokinase-type (u-PA) and the tissue-type (TPA), cleaving the 369-Arg-Met-370 bond.
細胞内局在	Secreted.

画像



Western blot - Anti-PAI1 antibody (ab31280)

All lanes : Anti-PAI1 antibody (ab31280) at 0.1 µg/ml

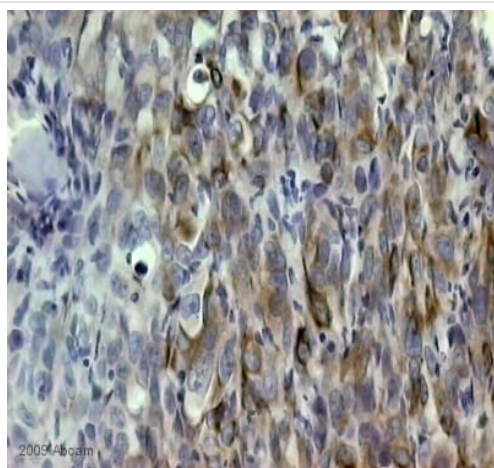
Lane 1 : A549 cell lysate (35µg protein in RIPA buffer)

Lane 2 : HepG2 cell lysate (35µg protein in RIPA buffer)

Lane 3 : HeLa cell lysate (35µg protein in RIPA buffer)

Developed using the ECL technique.

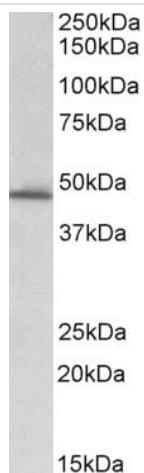
Predicted band size: 45 kDa



Immunohistochemistry (Formalin/PFA-fixed paraffin-embedded sections) - Anti-PAI1 antibody (ab31280)

This image is courtesy of an anonymous Abreview

ab31280, at 1/1000, staining plasminogen activator inhibitor 1 (PAI1) in human MDA-MB-231 cells grown in mice by Immunohistochemistry (Formalin/PFA-fixed paraffin-embedded sections). Sections were paraformaldehyde fixed and blocked in 10% casein for 30 minutes at 22°C and then incubated with ab31280, for 17 hours at 4°C. Horse polyclonal to goat IgG, diluted 1/200, was used as the secondary antibody.

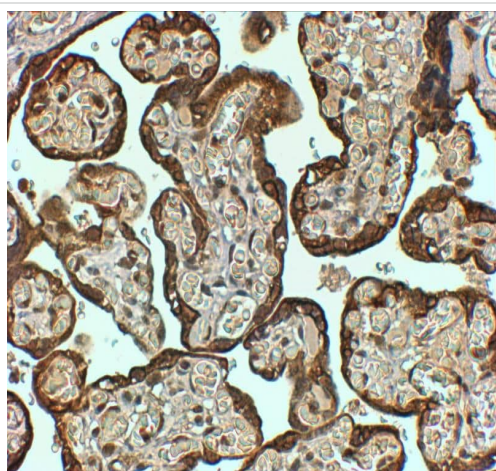


Western blot - Anti-PAI1 antibody (ab31280)

Anti-PAI1 antibody (ab31280) at 0.3 µg/ml + Human liver lysate
(35µg protein in RIPA buffer)

Developed using the ECL technique.

Predicted band size: 45 kDa



Immunohistochemistry (Formalin/PFA-fixed paraffin-embedded sections) - Anti-PAI1 antibody (ab31280)

ab31280 (4µg/ml) staining of paraffin embedded Human Placenta shows strong staining of cytotrophoblasts. Steamed antigen retrieval with citrate buffer pH 6, HRP-staining.

Please note: All products are "FOR RESEARCH USE ONLY. NOT FOR USE IN DIAGNOSTIC PROCEDURES"

Our Abpromise to you: Quality guaranteed and expert technical support

- Replacement or refund for products not performing as stated on the datasheet
- Valid for 12 months from date of delivery
- Response to your inquiry within 24 hours
- We provide support in Chinese, English, French, German, Japanese and Spanish
- Extensive multi-media technical resources to help you

- We investigate all quality concerns to ensure our products perform to the highest standards

If the product does not perform as described on this datasheet, we will offer a refund or replacement. For full details of the Abpromise, please visit <https://www.abcam.co.jp/abpromise> or contact our technical team.

Terms and conditions

- Guarantee only valid for products bought direct from Abcam or one of our authorized distributors