


Anti-PAF1/PD2 antibody - CHIP Grade ab20662

8 References [画像数 2](#)

製品の概要

製品名	Anti-PAF1/PD2 antibody - CHIP Grade
製品の詳細	Rabbit polyclonal to PAF1/PD2 - CHIP Grade
由来種	Rabbit
特異性	From Jan 2024, QC testing of replenishment batches of this polyclonal changed. All tested and expected application and reactive species combinations are still covered by our Abcam product promise. However, we no longer test all applications. For more information on a specific batch, please contact our Scientific Support who will be happy to help.
アプリケーション	適用あり: WB, CHIP
種交差性	交差種: Human 交差が予測される動物種: Mouse, Rat, Dog, Xenopus laevis 
免疫原	Synthetic peptide corresponding to Human PAF1/PD2 aa 100-200 (internal sequence) conjugated to keyhole limpet haemocyanin.
ポジティブ・コントロール	This antibody gave a positive signal in the following whole cell lysates: HeLa. This antibody gave a positive signal in chromatin prepared from the following whole cell lysates: HeLa.
特記事項	The Life Science industry has been in the grips of a reproducibility crisis for a number of years. Abcam is leading the way in addressing this with our range of recombinant monoclonal antibodies and knockout edited cell lines for gold-standard validation. Please check that this product meets your needs before purchasing. If you have any questions, special requirements or concerns, please send us an inquiry and/or contact our Support team ahead of purchase. Recommended alternatives for this product can be found below, along with publications, customer reviews and Q&As

製品の特性

製品の状態	Liquid
保存方法	Shipped at 4°C. Store at +4°C short term (1-2 weeks). Upon delivery aliquot. Store at -20°C or -80°C. Avoid freeze / thaw cycle.
バッファー	pH: 7.40 Preservative: 0.02% Sodium azide

Constituents: PBS, 1% BSA

Batches of this product that have a concentration < 1mg/ml may have BSA added as a stabilising agent. If you would like information about the formulation of a specific lot, please contact our scientific support team who will be happy to help.

精製度 Immunogen affinity purified
ポリモノ ポリクローナル
アイソタイプ IgG

アプリケーション

The Abpromise guarantee Abpromise保証は、次のテスト済みアプリケーションにおけるab20662の使用に適用されず
アプリケーションノートには、推奨の開始希釈率がありますが、適切な希釈率につきましてはご検討ください。

アプリケーション	Abreviews	特記事項
WB		Use a concentration of 1 µg/ml. Detects a band of approximately 80 kDa (predicted molecular weight: 60 kDa).
ChIP		Use 5-25 µg for µg of chromatin.

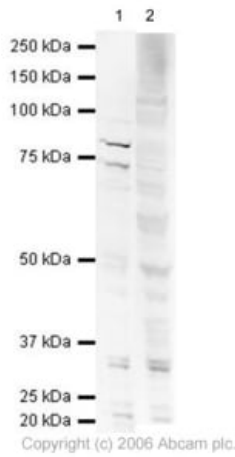
ターゲット情報

機能 The mammalian PAF1 complex is a multifunctional complex. The PAF1 complex interacts with RNA polymerase II and may be involved in both initiation and elongation, and in histone methylation and RNA processing. Has oncogenic activity in vivo and in vitro.

配列類似性 Belongs to the PAF1 family.

細胞内局在 Nucleus. Punctuate distribution throughout the nucleus except in nucleoli and the perinuclear chromatin.

画像



Western blot - Anti-PAF1/PD2 antibody - ChIP Grade (ab20662)

All lanes : Anti-PAF1/PD2 antibody - ChIP Grade (ab20662) at 1 $\mu\text{g/ml}$

Lane 1 : HeLa (Human epithelial carcinoma cell line) Whole Cell Lysate

Lane 2 : HeLa (Human epithelial carcinoma cell line) Whole Cell Lysate with Human PAF1/PD2 peptide (**ab23389**) at 1 $\mu\text{g/ml}$

Lysates/proteins at 20 μg per lane.

Secondary

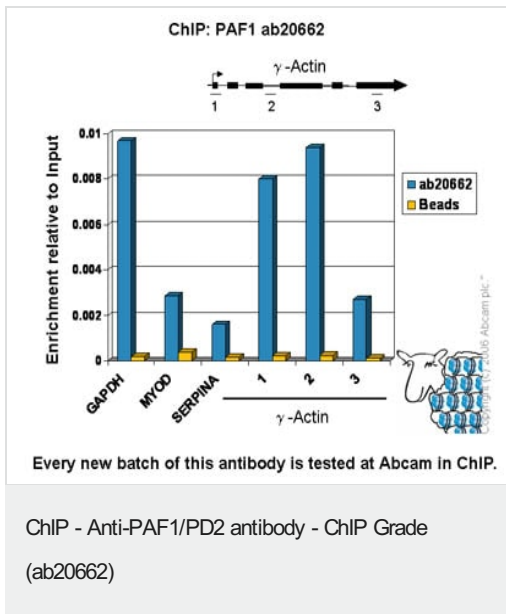
All lanes : Goat polyclonal to Rabbit IgG (Alexa Fluor® 680) (**ab28446**) at 1/10000 dilution

Predicted band size: 60 kDa

Observed band size: 85 kDa

Additional bands at: 73 kDa (possible cleavage fragment), 73 kDa (possible cross reactivity)

ab20662 recognizes a band at approximately 80kDa, which corresponds in size to PAF1 / PD2. Although it has a calculated molecular weight of ~60kDa, several groups have shown that it migrates at a size of 80-90kDa (see Moniaux, et.al., Oncogene Feb. 2006, Yart et.al., Mol Cell Biol 25:5052-60, 2005, and Rozenblatt-Rosen, et.al., Mol Cell Biol 25:612-20, 2005). There is also a smaller band at ~73kDa which may be a degradation product. Both bands are competed away by the addition of immunizing peptide, suggesting that the interaction is specific.



Chromatin was prepared from Hela cells according to the Abcam X-ChIP protocol. Cells were fixed with formaldehyde for 10min. The ChIP was performed with 25µg of chromatin, 5µg of ab20662 (blue), and 20µl of Protein A/G sepharose beads **in RIPA buffer**. No antibody was added to the beads control (yellow). The immunoprecipitated DNA was quantified on the GAPDH (active) and MYO-D and SERPINA (inactive) promoters and over the γ-Actin gene (active). Schematic diagram of the γ-Actin gene is shown on the top of the figure. Black boxes represent exons and thin lines represent introns. PCR products are depicted as bars under the gene.

Please note: All products are "FOR RESEARCH USE ONLY. NOT FOR USE IN DIAGNOSTIC PROCEDURES"

Our Abpromise to you: Quality guaranteed and expert technical support

- Replacement or refund for products not performing as stated on the datasheet
- Valid for 12 months from date of delivery
- Response to your inquiry within 24 hours
- We provide support in Chinese, English, French, German, Japanese and Spanish
- Extensive multi-media technical resources to help you
- We investigate all quality concerns to ensure our products perform to the highest standards

If the product does not perform as described on this datasheet, we will offer a refund or replacement. For full details of the Abpromise, please visit <https://www.abcam.co.jp/abpromise> or contact our technical team.

Terms and conditions

- Guarantee only valid for products bought direct from Abcam or one of our authorized distributors