

# Anti-PAF1/PD2 antibody ab70638

**1 References**   [画像数 2](#)

### 製品の概要

製品名	Anti-PAF1/PD2 antibody
製品の詳細	Rabbit polyclonal to PAF1/PD2
由来種	Rabbit
アプリケーション	<b>適用あり:</b> IHC-P
種交差性	<b>交差種:</b> Mouse, Human
免疫原	Synthetic peptide corresponding to Human PAF1/PD2. Database link: <a href="#">Q9NUU9</a>
特記事項	<p>The Life Science industry has been in the grips of a reproducibility crisis for a number of years. Abcam is leading the way in addressing this with our range of recombinant monoclonal antibodies and knockout edited cell lines for gold-standard validation. Please check that this product meets your needs before purchasing.</p> <p>If you have any questions, special requirements or concerns, please send us an inquiry and/or contact our Support team ahead of purchase. Recommended alternatives for this product can be found below, along with publications, customer reviews and Q&amp;As</p>

### 製品の特性

製品の状態	Liquid
保存方法	Shipped at 4°C. Upon delivery aliquot and store at -20°C. Avoid freeze / thaw cycles.
バッファー	pH: 7 Preservative: 0.1% Sodium azide Constituents: 1.815% Tris, 1.764% Sodium citrate, 0.021% PBS
精製度	Immunogen affinity purified
ポリモノ	ポリクローナル
アイソタイプ	IgG

### アプリケーション

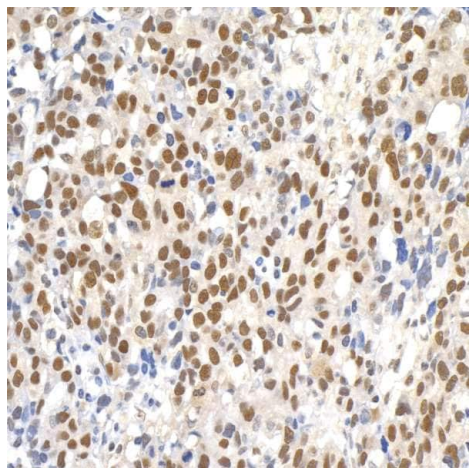
**The Abpromise guarantee**   Abpromise保証は、 次のテスト済みアプリケーションにおけるab70638の使用に適用されます  
アプリケーションノートには、推奨の開始希釈率がありますが、適切な希釈率につきましてはご確認ください。

アプリケーション	Abreviews	特記事項
IHC-P		1/500 - 1/2000. Perform heat mediated antigen retrieval with citrate buffer pH 6 before commencing with IHC staining protocol.

## ターゲット情報

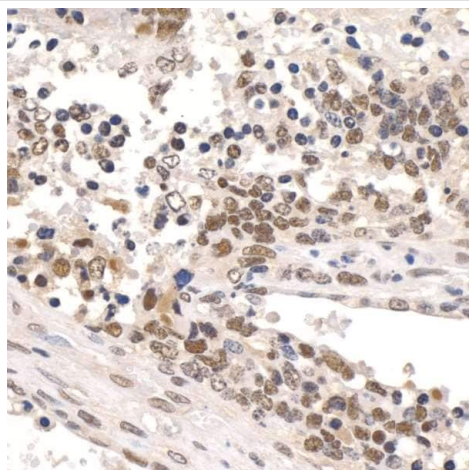
機能	The mammalian PAF1 complex is a multifunctional complex. The PAF1 complex interacts with RNA polymerase II and may be involved in both initiation and elongation, and in histone methylation and RNA processing. Has oncogenic activity in vivo and in vitro.
配列類似性	Belongs to the PAF1 family.
細胞内局在	Nucleus. Punctuate distribution throughout the nucleus except in nucleoli and the perinuclear chromatin.

## 画像



Immunohistochemistry (Formalin/PFA-fixed paraffin-embedded sections) analysis of human breast teratoma tissue labelling PAF1/PD2 with ab70638 at 1/1000 (1 µg/ml). Detection: DAB.

Immunohistochemistry (Formalin/PFA-fixed paraffin-embedded sections) - Anti-PAF1/PD2 antibody (ab70638)



Immunohistochemistry (Formalin/PFA-fixed paraffin-embedded sections) analysis of mouse teratoma tissue labelling PAF1/PD2 with ab70638 at 1/1000 (1µg/ml). Detection: DAB.

Immunohistochemistry (Formalin/PFA-fixed paraffin-embedded sections) - Anti-PAF1/PD2 antibody (ab70638)

**Please note:** All products are "FOR RESEARCH USE ONLY. NOT FOR USE IN DIAGNOSTIC PROCEDURES"

#### **Our Abpromise to you: Quality guaranteed and expert technical support**

---

- Replacement or refund for products not performing as stated on the datasheet
- Valid for 12 months from date of delivery
- Response to your inquiry within 24 hours
- We provide support in Chinese, English, French, German, Japanese and Spanish
- Extensive multi-media technical resources to help you
- We investigate all quality concerns to ensure our products perform to the highest standards

If the product does not perform as described on this datasheet, we will offer a refund or replacement. For full details of the Abpromise, please visit <https://www.abcam.co.jp/abpromise> or contact our technical team.

#### **Terms and conditions**

---

- Guarantee only valid for products bought direct from Abcam or one of our authorized distributors