


Anti-PAF-R antibody ab104162

★★★★☆ [1 Abreviews](#) [9 References](#) [画像数 1](#)

製品の概要

製品名	Anti-PAF-R antibody
製品の詳細	Rabbit polyclonal to PAF-R
由来種	Rabbit
アプリケーション	適用あり: ICC, IP, WB, Flow Cyt
種交差性	交差種: Human 交差が予測される動物種: Mouse, Rat, Pig, Rhesus monkey 
免疫原	Synthetic peptide corresponding to Human PAF-R aa 1-100 (N terminal) conjugated to keyhole limpet haemocyanin.

 [Run BLAST with](#)  [Run BLAST with](#) 

特記事項

The Life Science industry has been in the grips of a reproducibility crisis for a number of years. Abcam is leading the way in addressing this with our range of recombinant monoclonal antibodies and knockout edited cell lines for gold-standard validation. Please check that this product meets your needs before purchasing.

If you have any questions, special requirements or concerns, please send us an inquiry and/or contact our Support team ahead of purchase. Recommended alternatives for this product can be found below, along with publications, customer reviews and Q&As

製品の特性

製品の状態	Liquid
保存方法	Shipped at 4°C. Store at -20°C. Stable for 12 months at -20°C.
バッファー	pH: 7.40 Preservative: 0.02% Sodium azide Constituents: Tris buffered saline, 0.05% BSA, 50% Glycerol
精製度	Immunogen affinity purified
ポリ/モノ	ポリクローナル
アイソタイプ	IgG

アプリケーション

The Abpromise guarantee

Abpromise保証は、次のテスト済みアプリケーションにおけるab104162の使用に適用されます

アプリケーションノートには、推奨の開始希釈率がありますが、適切な希釈率につきましてはご検討ください。

アプリケーション	Abreviews	特記事項
ICC		Use at an assay dependent concentration.
IP		Use at an assay dependent concentration.
WB		1/200. Predicted molecular weight: 39 kDa.
Flow Cyt		Use at an assay dependent concentration. ab171870 - Rabbit polyclonal IgG, is suitable for use as an isotype control with this antibody.

ターゲット情報

機能

Receptor for platelet activating factor, a chemotactic phospholipid mediator that possesses potent inflammatory, smooth-muscle contractile and hypotensive activity. Seems to mediate its action via a G protein that activates a phosphatidylinositol-calcium second messenger system.

組織特異性

Expressed in the placenta, lung, left and right heart ventricles, heart atrium, leukocytes and differentiated HL-60 granulocytes.

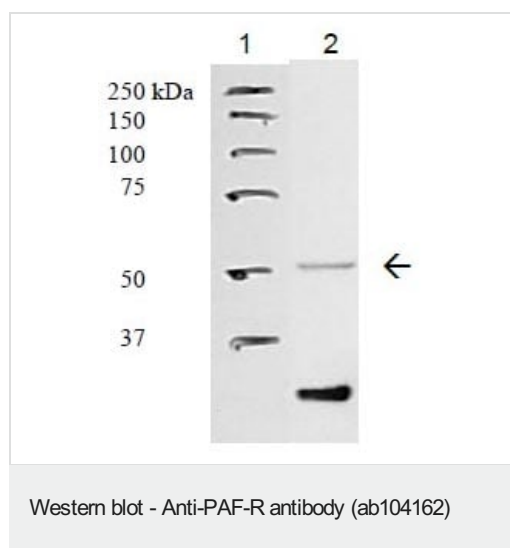
配列類似性

Belongs to the G-protein coupled receptor 1 family.

細胞内局在

Cell membrane.

画像



All lanes : Anti-PAF-R antibody (ab104162) at 1 µg/ml

Lane 1 : Molecular weight markers

Lane 2 : A549 membrane fraction at 30 µg

Secondary

All lanes : Anti-rabbit IgG (HRP) conjugate at 1/10000 dilution

Developed using the ECL technique.

Predicted band size: 39 kDa

Please note: All products are "FOR RESEARCH USE ONLY. NOT FOR USE IN DIAGNOSTIC PROCEDURES"

Our Abpromise to you: Quality guaranteed and expert technical support

- Replacement or refund for products not performing as stated on the datasheet
- Valid for 12 months from date of delivery
- Response to your inquiry within 24 hours

- We provide support in Chinese, English, French, German, Japanese and Spanish
- Extensive multi-media technical resources to help you
- We investigate all quality concerns to ensure our products perform to the highest standards

If the product does not perform as described on this datasheet, we will offer a refund or replacement. For full details of the Abpromise, please visit <https://www.abcam.co.jp/abpromise> or contact our technical team.

Terms and conditions

- Guarantee only valid for products bought direct from Abcam or one of our authorized distributors