

Anti-PAEP/Glycodelin antibody [13] ab17247

6 References [画像数 1](#)

製品の概要

製品名	Anti-PAEP/Glycodelin antibody [13]
製品の詳細	Mouse monoclonal [13] to PAEP/Glycodelin
由来種	Mouse
アプリケーション	適用あり: IHC-P
種交差性	交差種: Human
免疫原	Full length native protein (purified) corresponding to Human PAEP/Glycodelin. Database link: P09466
特記事項	<p>The Life Science industry has been in the grips of a reproducibility crisis for a number of years. Abcam is leading the way in addressing this with our range of recombinant monoclonal antibodies and knockout edited cell lines for gold-standard validation. Please check that this product meets your needs before purchasing.</p> <p>If you have any questions, special requirements or concerns, please send us an inquiry and/or contact our Support team ahead of purchase. Recommended alternatives for this product can be found below, along with publications, customer reviews and Q&As</p>

製品の特性

製品の状態	Liquid
保存方法	Shipped at 4°C. Store at +4°C short term (1-2 weeks). Store at -20°C or -80°C. Avoid freeze / thaw cycle.
バッファー	pH: 7.40 Preservative: 0.097% Sodium azide Constituents: 0.0268% PBS, 2.9% Sodium chloride
精製度	Protein G purified
ポリ/モノ	モノクローナル
クローン名	13
アイソタイプ	IgG1
軽鎖の種類	kappa

アプリケーション

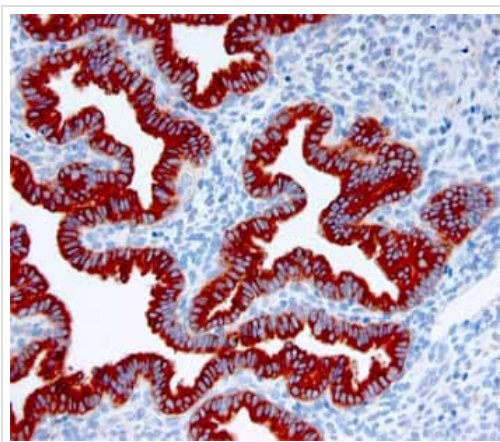
The Abpromise guarantee **Abpromise保証は、次のテスト済みアプリケーションにおけるab17247の使用に適用されます**
アプリケーションノートには、推奨の開始希釈率がありますが、適切な希釈率につきましてはご検討ください。

アプリケーション	Abreviews	特記事項
IHC-P		Use at an assay dependent concentration.

ターゲット情報

機能	This protein is, quantitatively, the main protein synthesized and secreted in the endometrium from mid-luteal phase of the menstrual cycle and during the first semester of pregnancy.
配列類似性	Belongs to the calycin superfamily. Lipocalin family.
翻訳後修飾	At least two differentially glycosylated forms are found. Glycodelin-A (GdA) (amniotic fluid) with contraceptive and immunosuppressive activities and glycodelin-S (Gds) (seminal plasma) whose role is not yet known. The gender-specific glycosylation may serve to regulate key process involved in human reproduction.
細胞内局在	Secreted.

画像



ab17247 staining endometrial tissue from the late secretory phase.
Staining is restricted to the glandular cells.

Immunohistochemistry (Formalin/PFA-fixed paraffin-embedded sections) - Anti-PAEP/Glycodelin antibody [13] (ab17247)

Please note: All products are "FOR RESEARCH USE ONLY. NOT FOR USE IN DIAGNOSTIC PROCEDURES"

Our Abpromise to you: Quality guaranteed and expert technical support

- Replacement or refund for products not performing as stated on the datasheet
- Valid for 12 months from date of delivery
- Response to your inquiry within 24 hours

- We provide support in Chinese, English, French, German, Japanese and Spanish
- Extensive multi-media technical resources to help you
- We investigate all quality concerns to ensure our products perform to the highest standards

If the product does not perform as described on this datasheet, we will offer a refund or replacement. For full details of the Abpromise, please visit <https://www.abcam.co.jp/abpromise> or contact our technical team.

Terms and conditions

- Guarantee only valid for products bought direct from Abcam or one of our authorized distributors