

Anti-p60 katanin antibody [EPR5071] ab111881

リコンビナント **RabMAb**

4 References 画像数 3

製品の概要

| | |
|--------------|--|
| 製品名 | Anti-p60 katanin antibody [EPR5071] |
| 製品の詳細 | Rabbit monoclonal [EPR5071] to p60 katanin |
| 由来種 | Rabbit |
| アプリケーション | 適用あり: WB, ICC/IF 適用なし: Flow Cyt, IHC-P or IP |
| 種交差性 | 交差種: Human |
| 免疫原 | Synthetic peptide. This information is proprietary to Abcam and/or its suppliers. |
| ポジティブ・コントロール | WB: HeLa and HepG2 cell lysates. ICC/IF: HeLa cell lysate. |
| 特記事項 | <p>This product is a recombinant monoclonal antibody, which offers several advantages including:</p> <ul style="list-style-type: none"> - High batch-to-batch consistency and reproducibility - Improved sensitivity and specificity - Long-term security of supply - Animal-free production <p>For more information see here.</p> <p>Our RabMAb[®] technology is a patented hybridoma-based technology for making rabbit monoclonal antibodies. For details on our patents, please refer to RabMAb[®] patents.</p> <p>Mouse, Rat: We have preliminary internal testing data to indicate this antibody may not react with these species. Please contact us for more information.</p> |

製品の特性

| | |
|-------|---|
| 製品の状態 | Liquid |
| 保存方法 | Shipped at 4°C. Store at -20°C. Stable for 12 months at -20°C. |
| バッファー | <p>pH: 7.20</p> <p>Preservative: 0.05% Sodium azide</p> <p>Constituents: 0.1% BSA, 40% Glycerol (glycerin, glycerine), 9.85% Tris glycine, 50% Tissue culture supernatant</p> |
| 精製度 | Protein A purified |
| ポリ/モノ | モノクローナル |

クローン名 EPR5071
アイソタイプ IgG

アプリケーション

The Abpromise guarantee **Abpromise保証は、** 次のテスト済みアプリケーションにおけるab111881の使用に適用されます
アプリケーションノートには、推奨の開始希釈率がありますが、適切な希釈率につきましてはご確認ください。

| アプリケーション | Abreviews | 特記事項 |
|----------|-----------|---|
| WB | | 1/1000 - 1/10000. Predicted molecular weight: 56 kDa. |
| ICC/IF | | 1/100. |

追加情報 Is unsuitable for Flow Cyt, IHC-P or IP.

ターゲット情報

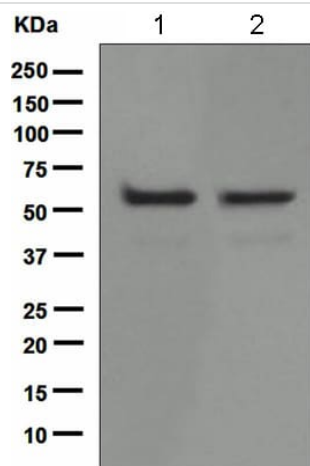
機能 Severs microtubules in vitro in an ATP-dependent manner. This activity may promote rapid reorganization of cellular microtubule arrays, such as during disassembly of interphase microtubules at the G2-M transition. May also be required for microtubule release from the centrosome after nucleation. In mitotic spindles this could allow depolymerization of the microtubule end proximal to the centrosome, and subsequent poleward microtubule flux. In neurons, microtubule release within the cell body may allow their subsequent transport into neuronal processes by microtubule dependent motor proteins. This transport is required for axonal growth.

配列類似性 Belongs to the AAA ATPase family.

ドメイン The N-terminus is sufficient for interaction with microtubules, although high affinity binding requires an intact C-terminal domain and ATP, which promotes oligomerization.

細胞内局在 Cytoplasm. Cytoplasm > cytoskeleton > centrosome. Cytoplasm > cytoskeleton > spindle pole. Predominantly cytoplasmic. Also localized to the interphase centrosome. Enhanced recruitment to the mitotic spindle poles requires microtubules and interaction with KATNB1.

画像



Western blot - Anti-p60 katanin antibody [EPR5071] (ab111881)

All lanes : Anti-p60 katanin antibody [EPR5071] (ab111881) at 1/1000 dilution

Lane 1 : HeLa cell lysate

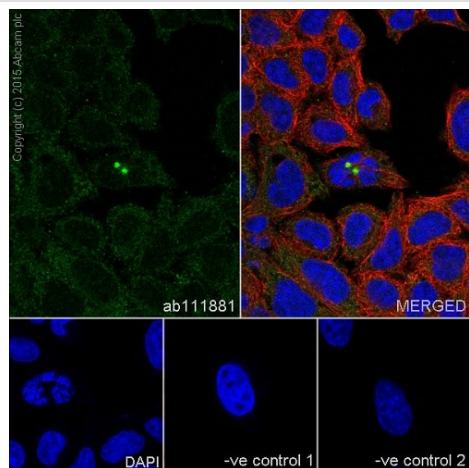
Lane 2 : HepG2 cell lysate

Lysates/proteins at 10 µg per lane.

Secondary

All lanes : HRP labelled goat anti-rabbit at 1/2000 dilution

Predicted band size: 56 kDa



Immunocytochemistry/ Immunofluorescence - Anti-p60 katanin antibody [EPR5071] (ab111881)

Immunofluorescent analysis of 4% paraformaldehyde-fixed, 0.1% Triton X-100 permeabilized HeLa (Human epithelial cells from cervix adenocarcinoma) cells labeling p60 katanin with ab111881 at 1/100 dilution, followed by Goat anti-rabbit IgG (Alexa Fluor® 488) (**ab150077**) secondary antibody at 1/1000 dilution (green).

Confocal image showing staining on the centrosome of Hela cells.

The nuclear counterstain is DAPI (blue).

Tubulin is detected with **ab7291** (anti-Tubulin mouse mAb) at 1/1000 dilution and **ab150120** (AlexaFluor®594 Goat anti-Mouse secondary) at 1/1000 dilution (red).

The negative controls are as follows:-

-ve control 1: ab111881 at 1/100 dilution followed by **ab150120** (AlexaFluor®594 Goat anti-Mouse secondary) at 1/1000 dilution.

-ve control 2: **ab7291** (anti-Tubulin mouse mAb) at 1/1000 dilution followed by **ab150077** (Alexa Fluor®488 Goat Anti-Rabbit IgG H&L) at 1/1000 dilution.

Why choose a recombinant antibody?



Research with confidence
Consistent and reproducible results



Long-term and scalable supply
Recombinant technology



Success from the first experiment
Confirmed specificity



Ethical standards compliant
Animal-free production

Anti-p60 katanin antibody [EPR5071] (ab111881)

Please note: All products are "FOR RESEARCH USE ONLY. NOT FOR USE IN DIAGNOSTIC PROCEDURES"

Our Abpromise to you: Quality guaranteed and expert technical support

- Replacement or refund for products not performing as stated on the datasheet
- Valid for 12 months from date of delivery
- Response to your inquiry within 24 hours
- We provide support in Chinese, English, French, German, Japanese and Spanish
- Extensive multi-media technical resources to help you
- We investigate all quality concerns to ensure our products perform to the highest standards

If the product does not perform as described on this datasheet, we will offer a refund or replacement. For full details of the Abpromise, please visit <https://www.abcam.co.jp/abpromise> or contact our technical team.

Terms and conditions

- Guarantee only valid for products bought direct from Abcam or one of our authorized distributors