

Anti-p60 CAF1/MPP7 antibody ab72520

★★★★★ [1 Abreviews](#) [2 References](#) [画像数 3](#)

製品の概要

製品名	Anti-p60 CAF1/MPP7 antibody
製品の詳細	Rabbit polyclonal to p60 CAF1/MPP7
由来種	Rabbit
アプリケーション	適用あり: IHC-P, WB, IP
種交差性	交差種: Human 交差が予測される動物種: Rhesus monkey, Gorilla, Orangutan 
免疫原	Synthetic peptide corresponding to Human p60 CAF1/MPP7 (C terminal). Database link: NP_005432.1
特記事項	<p>The Life Science industry has been in the grips of a reproducibility crisis for a number of years. Abcam is leading the way in addressing this with our range of recombinant monoclonal antibodies and knockout edited cell lines for gold-standard validation. Please check that this product meets your needs before purchasing.</p> <p>If you have any questions, special requirements or concerns, please send us an inquiry and/or contact our Support team ahead of purchase. Recommended alternatives for this product can be found below, along with publications, customer reviews and Q&As</p>

製品の特性

製品の状態	Liquid
保存方法	Shipped at 4°C. Upon delivery aliquot and store at -20°C. Avoid freeze / thaw cycles.
バッファー	pH: 6.8 Preservative: 0.09% Sodium azide Constituents: 0.1% BSA, Tris buffered saline
精製度	Immunogen affinity purified
ポリ/モノ	ポリクローナル
アイソタイプ	IgG

アプリケーション

The Abpromise guarantee

Abpromise保証は、 次のテスト済みアプリケーションにおけるab72520の使用に適用されます

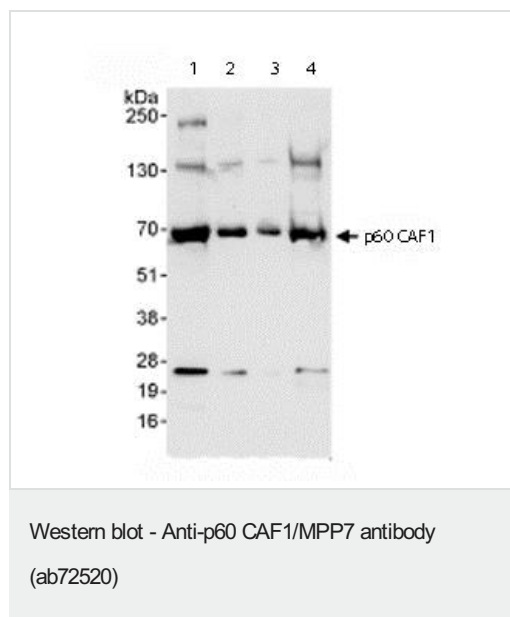
アプリケーションノートには、推奨の開始希釈率がありますが、適切な希釈率につきましてはご確認ください。

アプリケーション	Abreviews	特記事項
IHC-P		1/100 - 1/500. Perform heat mediated antigen retrieval with citrate buffer pH 6 before commencing with IHC staining protocol.
WB		1/2000 - 1/10000. Detects a band of approximately 25, 65, 130, 240 kDa (predicted molecular weight: 61 kDa).
IP		Use at 2-5 µg/mg of lysate.

ターゲット情報

機能	Complex that is thought to mediate chromatin assembly in DNA replication and DNA repair. Assembles histone octamers onto replicating DNA in vitro. CAF-1 performs the first step of the nucleosome assembly process, bringing newly synthesized histones H3 and H4 to replicating DNA; histones H2A/H2B can bind to this chromatin precursor subsequent to DNA replication to complete the histone octamer. The CCR4-NOT complex functions as general transcription regulation complex.
配列類似性	Belongs to the WD repeat HIR1 family. Contains 7 WD repeats.
発生段階	Active complex is found in G1, S and G2 phases.
翻訳後修飾	Differentially phosphorylated during cell cycle. During mitosis the p60 subunit of inactive CAF-1 is hyperphosphorylated and displaced into the cytosol. Progressively dephosphorylated from G1 to S and G2 phase. Phosphorylated p60 is recruited to chromatin undergoing DNA repair after UV irradiation in G1, S or G2 phases.
細胞内局在	Nucleus. Cytoplasm. DNA replication foci. Cytoplasmic in M phase.

画像



All lanes : Anti-p60 CAF1/MPP7 antibody (ab72520) at 0.04 µg/ml

Lane 1 : Whole cell lysate from HeLa cells at 50 µg

Lane 2 : Whole cell lysate from HeLa cells at 15 µg

Lane 3 : Whole cell lysate from HeLa cells at 5 µg

Lane 4 : Whole cell lysate from 293T cells at 50 µg

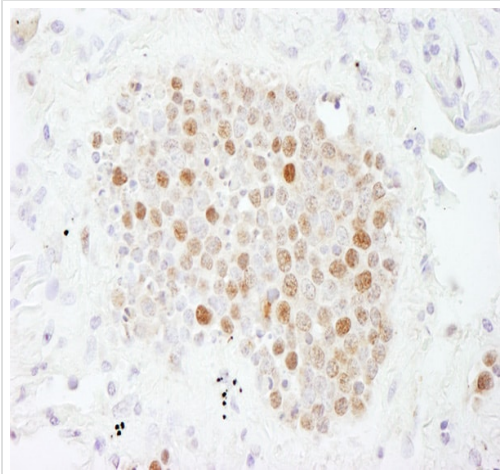
Developed using the ECL technique.

Predicted band size: 61 kDa

Observed band size: 65 kDa

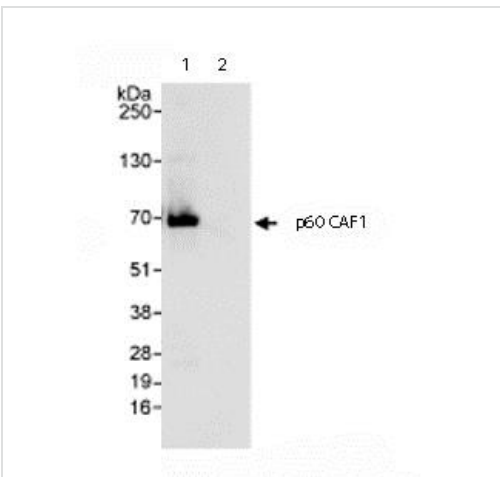
Additional bands at: 130 kDa, 240 kDa, 25 kDa. We are unsure as to the identity of these extra bands.

Exposure time: 10 seconds



Immunohistochemistry (Formalin/PFA-fixed paraffin-embedded sections) - Anti-p60 CAF1/MPP7 antibody (ab72520)

Immunohistochemistry (Formalin/PFA-fixed paraffin-embedded sections) analysis of human small cell lung cancer tissue labelling p60 CAF1/MPP7 with **ab7252** at 1/200 (1µg/ml). Detection: DAB.



Immunoprecipitation - Anti-p60 CAF1/MPP7 antibody (ab72520)

Immunoprecipitation/ Western Blot of p60 CAF1/MPP7. Lane 1: ab72520 at 3µg/mg whole cell lysate. Lane 2: Control IgG. ab72520 at 1µg/ml for WB. Whole cell lysate from Hela cells at 1mg for IP, 20% of IP loaded. Chemiluminescence with an exposure time of 3 seconds.

Please note: All products are "FOR RESEARCH USE ONLY. NOT FOR USE IN DIAGNOSTIC PROCEDURES"

Our Promise to you: Quality guaranteed and expert technical support

- Replacement or refund for products not performing as stated on the datasheet
- Valid for 12 months from date of delivery
- Response to your inquiry within 24 hours
- We provide support in Chinese, English, French, German, Japanese and Spanish
- Extensive multi-media technical resources to help you
- We investigate all quality concerns to ensure our products perform to the highest standards

If the product does not perform as described on this datasheet, we will offer a refund or replacement. For full details of the Abpromise, please visit <https://www.abcam.co.jp/abpromise> or contact our technical team.

Terms and conditions

- Guarantee only valid for products bought direct from Abcam or one of our authorized distributors