

### Anti-p57 Kip2 antibody ab99888

画像数 1

#### 製品の概要

製品名	Anti-p57 Kip2 antibody
製品の詳細	Rabbit polyclonal to p57 Kip2
由来種	Rabbit
アプリケーション	<b>適用あり:</b> IHC-P
種交差性	<b>交差種:</b> Human
免疫原	Synthetic peptide within Human p57 Kip2 aa 50-150 (N terminal). The exact sequence is proprietary. Database link: <a href="#">P49918</a>

#### 特記事項

**This product is FOR RESEARCH USE ONLY. For commercial use, please contact [partnerships@abcam.com](mailto:partnerships@abcam.com).**

The Life Science industry has been in the grips of a reproducibility crisis for a number of years. Abcam is leading the way in addressing this with our range of recombinant monoclonal antibodies and knockout edited cell lines for gold-standard validation. Please check that this product meets your needs before purchasing.

If you have any questions, special requirements or concerns, please send us an inquiry and/or contact our Support team ahead of purchase. Recommended alternatives for this product can be found below, along with publications, customer reviews and Q&As

#### 製品の特性

製品の状態	Liquid
保存方法	Shipped at 4°C. Store at +4°C.
バッファー	pH: 7.60 Preservative: 0.1% Sodium azide Constituents: PBS, 1% BSA
精製度	Immunogen affinity purified
特記事項 (精製)	Purified immunoglobulin from Rabbit serum.
ポリ/モノ	ポリクローナル
アイソタイプ	IgG

## アプリケーション

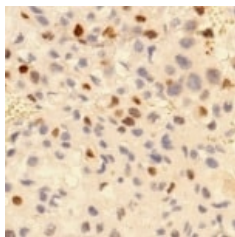
**The Abpromise guarantee**      Abpromise保証は、 次のテスト済みアプリケーションにおけるab99888の使用に適用されます  
アプリケーションノートには、推奨の開始希釈率がありますが、適切な希釈率につきましてはご検討ください。

アプリケーション	Abreviews	特記事項
IHC-P		1/100.

## ターゲット情報

機能	Potent tight-binding inhibitor of several G1 cyclin/CDK complexes (cyclin E-CDK2, cyclin D2-CDK4, and cyclin A-CDK2) and, to lesser extent, of the mitotic cyclin B-CDC2. Negative regulator of cell proliferation. May play a role in maintenance of the non-proliferative state throughout life.
組織特異性	Expressed in the heart, brain, lung, skeletal muscle, kidney, pancreas and testis. High levels are seen in the placenta while low levels are seen in the liver.
関連疾患	Defects in CDKN1C are a cause of Beckwith-Wiedemann syndrome (BWS) [MIM:130650]. BWS is a genetically heterogeneous disorder characterized by anterior abdominal wall defects including exomphalos (omphalocele), pre- and postnatal overgrowth, and macroglossia. Additional less frequent complications include specific developmental defects and a predisposition to embryonal tumors. Note=Defects in CDKN1C are involved in tumor formation.
配列類似性	Belongs to the CDI family.
細胞内局在	Nucleus.

## 画像



Staining of Human p57 Kip2 in a formalin fixed, paraffin embedded sections using ab99888 at a dilution of 1/100.

Immunohistochemistry (Formalin/PFA-fixed paraffin-embedded sections) - Anti-p57 Kip2 antibody (ab99888)

**Please note:** All products are "FOR RESEARCH USE ONLY. NOT FOR USE IN DIAGNOSTIC PROCEDURES"

## Our Abpromise to you: Quality guaranteed and expert technical support

- Replacement or refund for products not performing as stated on the datasheet
- Valid for 12 months from date of delivery

- Response to your inquiry within 24 hours
- We provide support in Chinese, English, French, German, Japanese and Spanish
- Extensive multi-media technical resources to help you
- We investigate all quality concerns to ensure our products perform to the highest standards

If the product does not perform as described on this datasheet, we will offer a refund or replacement. For full details of the Abpromise, please visit <https://www.abcam.co.jp/abpromise> or contact our technical team.

#### **Terms and conditions**

---

- Guarantee only valid for products bought direct from Abcam or one of our authorized distributors