

Anti-p53 antibody [PAb 1801] ab28

KO 評価済

★★★★☆ 13 Abreviews 57 References 画像数 5

製品の概要

製品名	Anti-p53 antibody [PAb 1801]
製品の詳細	Mouse monoclonal [PAb 1801] to p53
由来種	Mouse
アプリケーション	適用あり: WB, ELISA
種交差性	交差種: Human
免疫原	Fusion protein. This information is proprietary to Abcam and/or its suppliers.
エピトープ	aa 46-55 of human p53
ポジティブ・コントロール	WB: A431 cell lysate, MDA-MB-231 cell lysate.
特記事項	<p>This monoclonal p53 antibody has been knockout validated in Western blot. The expected band for p53 was observed in HCT116 cells treated with irinotecan and the band was not seen in <i>TP53</i> knockout HCT116 cell lysate.</p> <p>We recommend using ab1101 or ab154036, alternative mouse monoclonal antibodies, to detect human p53 by IHC, ICC/IF or flow cytometry since they perform better in these applications.</p> <p>This antibody clone is manufactured by Abcam. If you require a custom buffer formulation or conjugation for your experiments, please contact orders@abcam.com.</p> <p>The Life Science industry has been in the grips of a reproducibility crisis for a number of years. Abcam is leading the way in addressing this with our range of recombinant monoclonal antibodies and knockout edited cell lines for gold-standard validation. Please check that this product meets your needs before purchasing.</p> <p>If you have any questions, special requirements or concerns, please send us an inquiry and/or contact our Support team ahead of purchase. Recommended alternatives for this product can be found below, along with publications, customer reviews and Q&As</p>

製品の特性

製品の状態	Liquid
保存方法	Shipped at 4°C. Upon delivery aliquot. Store at -20°C or -80°C. Avoid freeze / thaw cycle.
バッファー	<p>pH: 7.40</p> <p>Preservative: 0.02% Sodium azide</p>

Constituent: PBS

Some batches contain 6.97% L-Arginine as a stabilizing agent. For lot-specific buffer information, please contact our Scientific Support team.

精製度	Protein G purified
ポリモノ	モノクローナル
クローン名	PAb 1801
ミエローマ	NS1
アイソタイプ	IgG1
軽鎖の種類	kappa

アプリケーション

The Abpromise guarantee **Abpromise保証は、次のテスト済みアプリケーションにおけるab28の使用に適用されます**

アプリケーションノートには、推奨の開始希釈率がありますが、適切な希釈率につきましてはご検討ください。

アプリケーション	Abreviews	特記事項
WB	★★★★☆ (7)	Use a concentration of 5 µg/ml. Detects a band of approximately 53 kDa (predicted molecular weight: 53 kDa). We recommend using 3% milk as the blocking agent for Western blot.
ELISA		Use at an assay dependent concentration.

ターゲット情報

機能	Acts as a tumor suppressor in many tumor types; induces growth arrest or apoptosis depending on the physiological circumstances and cell type. Involved in cell cycle regulation as a trans-activator that acts to negatively regulate cell division by controlling a set of genes required for this process. One of the activated genes is an inhibitor of cyclin-dependent kinases. Apoptosis induction seems to be mediated either by stimulation of BAX and FAS antigen expression, or by repression of Bcl-2 expression. Implicated in Notch signaling cross-over. Isoform 2 enhances the transactivation activity of isoform 1 from some but not all TP53-inducible promoters. Isoform 4 suppresses transactivation activity and impairs growth suppression mediated by isoform 1. Isoform 7 inhibits isoform 1-mediated apoptosis.
組織特異性	Ubiquitous. Isoforms are expressed in a wide range of normal tissues but in a tissue-dependent manner. Isoform 2 is expressed in most normal tissues but is not detected in brain, lung, prostate, muscle, fetal brain, spinal cord and fetal liver. Isoform 3 is expressed in most normal tissues but is not detected in lung, spleen, testis, fetal brain, spinal cord and fetal liver. Isoform 7 is expressed in most normal tissues but is not detected in prostate, uterus, skeletal muscle and breast. Isoform 8 is detected only in colon, bone marrow, testis, fetal brain and intestine. Isoform 9 is expressed in most normal tissues but is not detected in brain, heart, lung, fetal liver, salivary gland, breast or intestine.
関連疾患	Note=TP53 is found in increased amounts in a wide variety of transformed cells. TP53 is frequently mutated or inactivated in about 60% of cancers. TP53 defects are found in Barrett metaplasia a condition in which the normally stratified squamous epithelium of the lower

esophagus is replaced by a metaplastic columnar epithelium. The condition develops as a complication in approximately 10% of patients with chronic gastroesophageal reflux disease and predisposes to the development of esophageal adenocarcinoma.

Defects in TP53 are a cause of esophageal cancer (ESCR) [MIM:133239].

Defects in TP53 are a cause of Li-Fraumeni syndrome (LFS) [MIM:151623]. LFS is an autosomal dominant familial cancer syndrome that in its classic form is defined by the existence of a proband affected by a sarcoma before 45 years with a first degree relative affected by any tumor before 45 years and another first degree relative with any tumor before 45 years or a sarcoma at any age. Other clinical definitions for LFS have been proposed (PubMed:8118819 and PubMed:8718514) and called Li-Fraumeni like syndrome (LFL). In these families affected relatives develop a diverse set of malignancies at unusually early ages. Four types of cancers account for 80% of tumors occurring in TP53 germline mutation carriers: breast cancers, soft tissue and bone sarcomas, brain tumors (astrocytomas) and adrenocortical carcinomas. Less frequent tumors include choroid plexus carcinoma or papilloma before the age of 15, rhabdomyosarcoma before the age of 5, leukemia, Wilms tumor, malignant phyllodes tumor, colorectal and gastric cancers.

Defects in TP53 are involved in head and neck squamous cell carcinomas (HNSCC) [MIM:275355]; also known as squamous cell carcinoma of the head and neck.

Defects in TP53 are a cause of lung cancer (LNCR) [MIM:211980].

Defects in TP53 are a cause of choroid plexus papilloma (CPLPA) [MIM:260500]. Choroid plexus papilloma is a slow-growing benign tumor of the choroid plexus that often invades the leptomeninges. In children it is usually in a lateral ventricle but in adults it is more often in the fourth ventricle. Hydrocephalus is common, either from obstruction or from tumor secretion of cerebrospinal fluid. If it undergoes malignant transformation it is called a choroid plexus carcinoma. Primary choroid plexus tumors are rare and usually occur in early childhood.

Defects in TP53 are a cause of adrenocortical carcinoma (ADCC) [MIM:202300]. ADCC is a rare childhood tumor of the adrenal cortex. It occurs with increased frequency in patients with the Beckwith-Wiedemann syndrome and is a component tumor in Li-Fraumeni syndrome.

配列類似性

Belongs to the p53 family.

ドメイン

The nuclear export signal acts as a transcriptional repression domain. The TAD I and TAD II motifs (residues 17 to 25 and 48 to 56) correspond both to 9aaTAD motifs which are transactivation domains present in a large number of yeast and animal transcription factors.

翻訳後修飾

Acetylated. Acetylation of Lys-382 by CREBBP enhances transcriptional activity. Deacetylation of Lys-382 by SIRT1 impairs its ability to induce proapoptotic program and modulate cell senescence.

Phosphorylation on Ser residues mediates transcriptional activation. Phosphorylated by HIPK1 (By similarity). Phosphorylation at Ser-9 by HIPK4 increases repression activity on BIRC5 promoter. Phosphorylated on Thr-18 by VRK1. Phosphorylated on Ser-20 by CHEK2 in response to DNA damage, which prevents ubiquitination by MDM2. Phosphorylated on Thr-55 by TAF1, which promotes MDM2-mediated degradation. Phosphorylated on Ser-46 by HIPK2 upon UV irradiation. Phosphorylation on Ser-46 is required for acetylation by CREBBP. Phosphorylated on Ser-392 following UV but not gamma irradiation. Phosphorylated upon DNA damage, probably by ATM or ATR. Phosphorylated on Ser-15 upon ultraviolet irradiation; which is enhanced by interaction with BANP.

Dephosphorylated by PP2A-PPP2R5C holoenzyme at Thr-55. SV40 small T antigen inhibits the dephosphorylation by the AC form of PP2A.

May be O-glycosylated in the C-terminal basic region. Studied in EB-1 cell line.

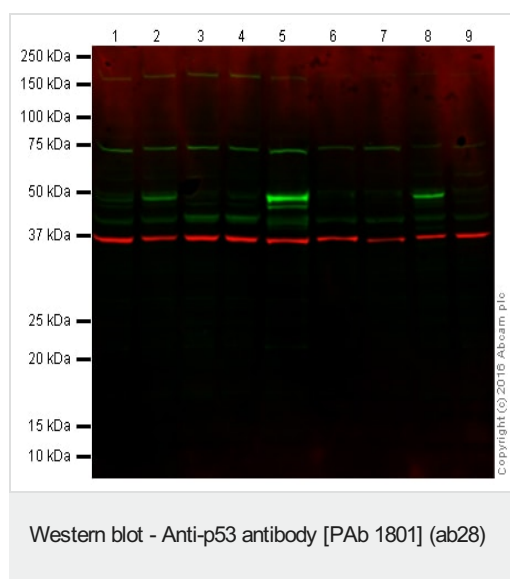
Ubiquitinated by MDM2 and SYVN1, which leads to proteasomal degradation. Ubiquitinated by RFWD3, which works in cooperation with MDM2 and may catalyze the formation of short polyubiquitin chains on p53/TP53 that are not targeted to the proteasome. Ubiquitinated by MKRN1 at Lys-291 and Lys-292, which leads to proteasomal degradation. Deubiquitinated by USP10, leading to its stabilization. Ubiquitinated by TRIM24, which leads to proteasomal

degradation. Ubiquitination by TOPORS induces degradation. Deubiquitination by USP7, leading to stabilization. Isoform 4 is monoubiquitinated in an MDM2-independent manner. Monomethylated at Lys-372 by SETD7, leading to stabilization and increased transcriptional activation. Monomethylated at Lys-370 by SMYD2, leading to decreased DNA-binding activity and subsequent transcriptional regulation activity. Lys-372 monomethylation prevents interaction with SMYD2 and subsequent monomethylation at Lys-370. Dimethylated at Lys-373 by EHMT1 and EHMT2. Monomethylated at Lys-382 by SETD8, promoting interaction with L3MBTL1 and leading to repress transcriptional activity. Demethylation of dimethylated Lys-370 by KDM1A prevents interaction with TP53BP1 and represses TP53-mediated transcriptional activation. Sumoylated by SUMO1.

細胞内局在

Cytoplasm; Cytoplasm. Nucleus. Nucleus > PML body. Endoplasmic reticulum. Interaction with BANP promotes nuclear localization. Recruited into PML bodies together with CHEK2; Nucleus. Cytoplasm. Localized in both nucleus and cytoplasm in most cells. In some cells, forms foci in the nucleus that are different from nucleoli; Nucleus. Cytoplasm. Localized in the nucleus in most cells but found in the cytoplasm in some cells; Nucleus. Cytoplasm. Localized mainly in the nucleus with minor staining in the cytoplasm; Nucleus. Cytoplasm. Predominantly nuclear but localizes to the cytoplasm when expressed with isoform 4 and Nucleus. Cytoplasm. Predominantly nuclear but translocates to the cytoplasm following cell stress.

画像



All lanes : Anti-p53 antibody [PAb 1801] (ab28) at 5 µg/ml

Lane 1 : Wild-type HCT116 cell lysate at 30 µg

Lane 2 : Wild-type HCT116 + irinotecan (10 µM, 24 hours) cell lysate at 30 µg

Lane 3 : p53 knockout HCT116 cell lysate at 30 µg

Lane 4 : p53 knockout HCT116 + irinotecan (10 µM, 24 hours) cell lysate at 30 µg

Lane 5 : A431 cell lysate (positive control) at 20 µg

Lane 6 : Saos-2 cell lysate (negative control) at 20 µg

Lane 7 : MEF cell lysate at 20 µg

Lane 8 : Wild-type HAP1 cell lysate at 20 µg

Lane 9 : p53 knockout HAP1 cell lysate at 20 µg

Performed under reducing conditions.

Predicted band size: 53 kDa

Lanes 1-9: Merged (red and green) signal.

Ab28 was shown to specifically react with p53 in wild-type HAP1 and HCT116 cells treated with irinotecan. No band was observed in

p53 knockout HAP1 or HCT116 cells. Wild-type and p53 knockout samples, positive and negative controls were subjected to SDS-PAGE. Ab28 and [ab181602](#) (loading control to GAPDH) were diluted 5 µg/mL and 1/10,000 respectively and incubated overnight at 4°C. Blots were developed with goat anti-rabbit IgG (H + L) and goat anti-mouse IgG (H + L) secondary antibodies at 1/10,000 dilution for 1 h at room temperature before imaging.



Western blot - Anti-p53 antibody [PAb 1801] (ab28)

Anti-p53 antibody [PAb 1801] (ab28) at 5 µg/ml + MDA-MB-231 (Human breast adenocarcinoma cell line) Whole Cell Lysate at 20 µg

Secondary

Goat Anti-Mouse IgG H&L (HRP) preadsorbed ([ab97040](#)) at 1/10000 dilution

Developed using the ECL technique.

Performed under reducing conditions.

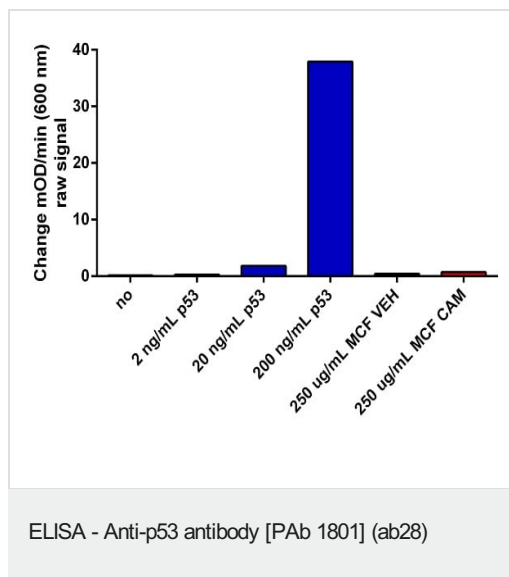
Predicted band size: 53 kDa

Additional bands at: 53 kDa, 60 kDa. We are unsure as to the identity of these extra bands.

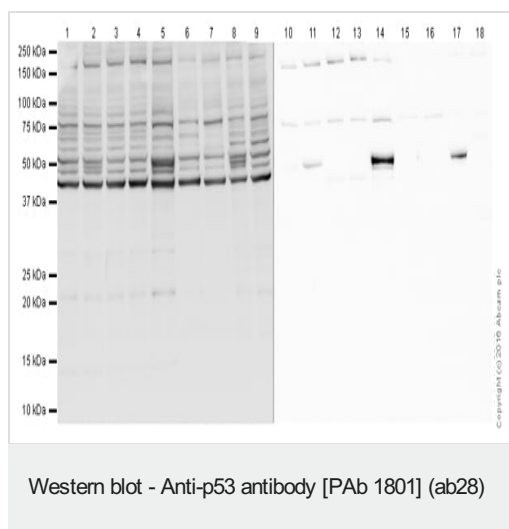
Exposure time: 20 minutes

This blot was produced using a 10% Bis-tris gel under the MOPS buffer system. The gel was run at 200V for 50 minutes before being transferred onto a Nitrocellulose membrane at 30V for 70 minutes. The membrane was then blocked for an hour using 3% Milk before being incubated with ab28 overnight at 4°C. Antibody binding was detected using an anti-mouse antibody conjugated to HRP, and visualised using ECL development solution.

We recommend using 3% milk as the blocking agent for Western blot.



Analysis of recombinant p53 protein ([ab43615](#)) in MCF7 cells treated with vehicle (VEH) as well as MCF7 cells treated with camptothecin (CAM) and no material (NO) by sandwich ELISA with the use of anti-p53 antibody (ab28) as capture and anti-p53 antibody ([ab32389](#)) as detector.



All Lanes: Anti-p53 antibody [PAb 1801] (ab28) at 5 µg/ml

Lane 1 and 10: Wild-type HCT116 cell lysate

Lane 2 and 11: Wild-type HCT116 + irinotecan (10 µM, 24 hours) cell lysate

Lane 3 and 12: p53 knockout HCT116 cell lysate

Lane 4 and 13: p53 knockout HCT116 + irinotecan (10 µM, 24 hours) cell lysate

Lane 5 and 14: A431 cell lysate (positive control)

Lane 6 and 15: Saos-2 cell lysate (negative control)

Lane 7 and 16: MEF cell lysate

Lane 8 and 17: Wild-type HAP1 cell lysate

Lane 9 and 18: p53 knockout HAP1 cell lysate

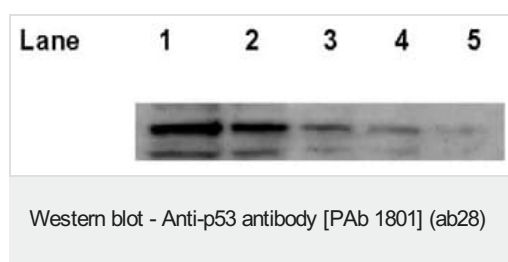
Lanes 1-9: 1% BSA blocking buffer

Lanes 10-18: 3% Milk blocking buffer

Secondary

Goat Anti-Mouse IgG H&L (HRP) at 1/5000 dilution

We recommend using 3% milk as the blocking agent for western blot.



The image shows a Western blot for ab28, testing the threshold detection of the p53 antibody. The lanes are as follows:

Lane 1 - 20ug of A549 lysate, lane 2 - 10ug of A549 lysate, lane 3 - 5ug of A549 lysate, lane 4 - 2.5ug of A549 lysate, lane 5 - 1.5ug of A549 lysate.

This picture was submitted as part of the review by Craig Carson.

Please note: All products are "FOR RESEARCH USE ONLY. NOT FOR USE IN DIAGNOSTIC PROCEDURES"

Our Abpromise to you: Quality guaranteed and expert technical support

- Replacement or refund for products not performing as stated on the datasheet
- Valid for 12 months from date of delivery
- Response to your inquiry within 24 hours
- We provide support in Chinese, English, French, German, Japanese and Spanish
- Extensive multi-media technical resources to help you
- We investigate all quality concerns to ensure our products perform to the highest standards

If the product does not perform as described on this datasheet, we will offer a refund or replacement. For full details of the Abpromise, please visit <https://www.abcam.co.jp/abpromise> or contact our technical team.

Terms and conditions

- Guarantee only valid for products bought direct from Abcam or one of our authorized distributors