

### Anti-p40-phox antibody [EP2142Y] ab76158

リコンビナント RabMAb

★★★★★ **1 Abreviews** **5 References** 画像数 6

#### 製品の概要

製品名	Anti-p40-phox antibody [EP2142Y]
製品の詳細	Rabbit monoclonal [EP2142Y] to p40-phox
由来種	Rabbit
アプリケーション	<b>適用あり:</b> Flow Cyt (Intra), ICC/IF, WB, IP, IHC-P
種交差性	<b>交差種:</b> Human
免疫原	Synthetic peptide within Human p40-phox aa 300-400 (C terminal). The exact sequence is proprietary.
ポジティブ・コントロール	WB: HL60 cell lysate. IHC: human spleen tissue. IF/ICC: MCF7 cell line. IP: HL-60. Flow Cyt: K562 cells.
特記事項	<p>This product is a recombinant monoclonal antibody, which offers several advantages including:</p> <ul style="list-style-type: none"><li>- High batch-to-batch consistency and reproducibility</li><li>- Improved sensitivity and specificity</li><li>- Long-term security of supply</li><li>- Animal-free production</li></ul> <p>For more information <a href="#">see here</a>.</p> <p>Our RabMAb<sup>®</sup> technology is a patented hybridoma-based technology for making rabbit monoclonal antibodies. For details on our patents, please refer to <a href="#">RabMAb<sup>®</sup> patents</a>.</p> <p>Mouse, Rat: We have preliminary internal testing data to indicate this antibody may not react with these species. Please contact us for more information.</p>

#### 製品の特性

製品の状態	Liquid
保存方法	Shipped at 4°C. Upon delivery aliquot and store at -20°C. Avoid freeze / thaw cycles.
バッファー	pH: 7.20 Preservative: 0.01% Sodium azide Constituents: 9% PBS, 40% Glycerol (glycerin, glycerine), 0.05% BSA, 50% Tissue culture supernatant
精製度	Protein A purified

ポリ/モノ	モノクローナル
クローン名	EP2142Y
アイソタイプ	IgG

## アプリケーション

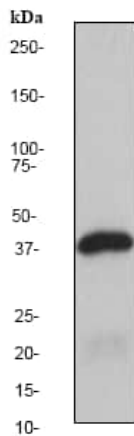
**The Abpromise guarantee** **Abpromise保証は、次のテスト済みアプリケーションにおけるab76158の使用に適用されず**  
 アプリケーションノートには、推奨の開始希釈率がありますが、適切な希釈率につきましてはご検討ください。

アプリケーション	Abreviews	特記事項
Flow Cyt (Intra)		1/20 - 1/100. <b>ab172730</b> - Rabbit monoclonal IgG, is suitable for use as an isotype control with this antibody.
ICC/IF		1/100 - 1/250.
WB	★★★★★ (1)	1/25000 - 1/50000. Detects a band of approximately 39 kDa (predicted molecular weight: 39 kDa).
IP		1/50.
IHC-P		1/100 - 1/250.

## ターゲット情報

機能	Component of the NADPH-oxidase, a multicomponent enzyme system responsible for the oxidative burst in which electrons are transported from NADPH to molecular oxygen, generating reactive oxidant intermediates. It may be important for the assembly and/or activation of the NADPH-oxidase complex.
組織特異性	Expression is restricted to hematopoietic cells.
配列類似性	Contains 1 PX (phox homology) domain. Contains 1 SH3 domain.
細胞内局在	Cytoplasm.

## 画像



Western blot - Anti-p40-phox antibody [EP2142Y] (ab76158)

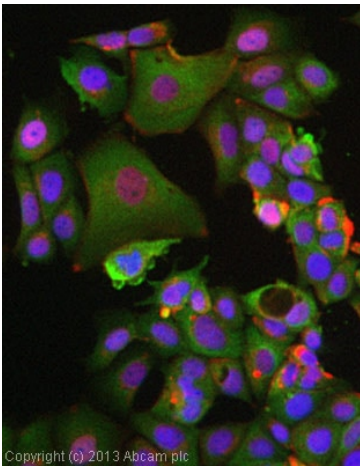
Anti-p40-phox antibody [EP2142Y] (ab76158) at 1/50000 dilution + HL60 cell lysate at 10 µg

**Secondary**

Goat anti-rabbit HRP conjugated at 1/2000 dilution

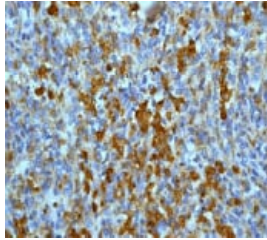
**Predicted band size:** 39 kDa

**Observed band size:** 39 kDa



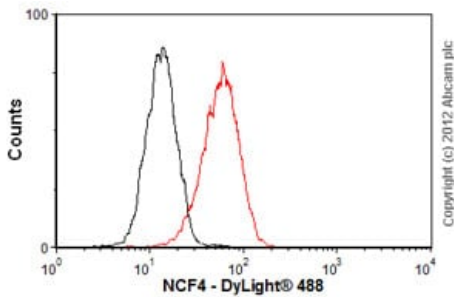
Immunocytochemistry/ Immunofluorescence - Anti-p40-phox antibody [EP2142Y] (ab76158)

ICC/IF image of ab76158 stained MCF7 cells. The cells were 4% formaldehyde fixed (10 min) and then incubated in 1%BSA / 10% normal goat serum / 0.3M glycine in 0.1% PBS-Tween for 1h to permeabilise the cells and block non-specific protein-protein interactions. The cells were then incubated with the antibody (ab76158, 1/25 dilution) overnight at +4°C. The secondary antibody (green) was **ab96899**, DyLight® 488 goat anti-rabbit IgG (H+L) used at a 1/250 dilution for 1h. Alexa Fluor® 594 WGA was used to label plasma membranes (red) at a 1/200 dilution for 1h. DAPI was used to stain the cell nuclei (blue) at a concentration of 1.43µM.



Immunohistochemistry (Formalin/PFA-fixed paraffin-embedded sections) - Anti-p40-phox antibody [EP2142Y] (ab76158)

ab76158 at 1/100-1/250 dilution staining p40-phox in human spleen by Immunohistochemistry, Paraffin-embedded tissue.



Flow Cytometry (Intracellular) - Anti-p40-phox antibody [EP2142Y] (ab76158)

Overlay histogram showing K562 cells stained with ab76158 (red line). The cells were fixed with 80% methanol (5 min) and then permeabilized with 0.1% PBS-Tween for 20 min. The cells were then incubated in 1x PBS / 10% normal goat serum / 0.3M glycine to block non-specific protein-protein interactions followed by the antibody (ab76158, 1/100 dilution) for 30 min at 22°C. The secondary antibody used was DyLight® 488 goat anti-rabbit IgG (H+L) ([ab96899](#)) at 1/500 dilution for 30 min at 22°C. Isotype control antibody (black line) was rabbit IgG (monoclonal) (1µg/1x10<sup>6</sup> cells) used under the same conditions. Acquisition of >5,000 events was performed.



Immunoprecipitation - Anti-p40-phox antibody [EP2142Y] (ab76158)

p40-phox was immunoprecipitated from 0.35 mg HL-60 (Human acute promyelocytic leukemia promyeloblast) whole cell lysate 10 µg with 76158 at 1/50 dilution (2µg). VeriBlot for IP Detection Reagent (HRP)([ab131366](#)) was used at 1/5000 dilution.





**Lane 1:** HL-60 (Human acute promyelocytic leukemia promyeloblast) whole cell lysate 10 µg

**Lane 2:** ab76158 IP in HL-60 whole cell lysate

**Lane 3:** Rabbit monoclonal IgG ([ab172730](#)) instead of ab76158 in HL-60 whole cell lysate

Blocking and dilution buffer and concentration: 5% NFDN/TBST.

Why choose a recombinant antibody?

 <p><b>Research with confidence</b> Consistent and reproducible results</p>	 <p><b>Long-term and scalable supply</b> Recombinant technology</p>
 <p><b>Success from the first experiment</b> Confirmed specificity</p>	 <p><b>Ethical standards compliant</b> Animal-free production</p>

Anti-p40-phox antibody [EP2142Y] (ab76158)

**Please note:** All products are "FOR RESEARCH USE ONLY. NOT FOR USE IN DIAGNOSTIC PROCEDURES"

### Our Abpromise to you: Quality guaranteed and expert technical support

---

- Replacement or refund for products not performing as stated on the datasheet
- Valid for 12 months from date of delivery
- Response to your inquiry within 24 hours
- We provide support in Chinese, English, French, German, Japanese and Spanish
- Extensive multi-media technical resources to help you
- We investigate all quality concerns to ensure our products perform to the highest standards

If the product does not perform as described on this datasheet, we will offer a refund or replacement. For full details of the Abpromise, please visit <https://www.abcam.co.jp/abpromise> or contact our technical team.

### Terms and conditions

---

- Guarantee only valid for products bought direct from Abcam or one of our authorized distributors